

D/A7/15/S15.1

DRAWING No. **D/A7/15/S15.1**

DESIGN DATA

DESIGN PRESSURE	2.76 BARS
DESIGN TEMPERATURE	200°C
WORKING PRESSURE	2.76 BARS
WORKING TEMPERATURE	230°C
HYDRAULIC PRESSURE TEST	6.08 BARS

ORIGINAL DESIGN TO GERMAN TUV CODE
FLANGE MATERIAL CHANGED FROM
ASTM A105 TO 316L STAINLESS STEEL
IN ACCORDANCE WITH ASME VIII DIV.1 (1983)
SEE CALC. No. N00010072

- WELDING NOTES**
1. FILLET WELDS TO HAVE A MIN LEG LENGTH OF 5MM UNLESS STATED OTHERWISE
 2. BUTT WELDS TO BE FULL PENETRATION
 3. 100% RADIOGRAPHY TO BE CARRIED OUT
 4. HASTELLOY C276 ELECTRODES TO BE USED
 5. CONTRACTORS FINAL WELD PREPS TO BE SUBMITTED FOR I.C.I. APPROVAL

UNSERVED COPY
 31 JUL 1991
WILL NOT BE UPDATED

MATERIAL NOTES

1. ALL 316L STAINLESS STEEL MATERIAL TO HAVE A MAXIMUM CARBON CONTENT OF 0.030% MAXIMUM
2. MATERIAL TEST CERTIFICATES TO BE SUPPLIED.

ENGIN. APPROVAL
OBTAINED DATED 17.2.89
SEE P.V. FILE FOR LETTERSIGNED DRAWING

ITEM No	DESCRIPTION	IMPACT CODE / ORDER No
1	MATERIAL	
2	HASTELLOY C276	
3	HASTELLOY C276	
4	316L	
5	316L	

DRG TITLE: **LWVA EVAPORATOR ARRANGEMENT & DETAILS OF EVAPORATOR BASE CONE**

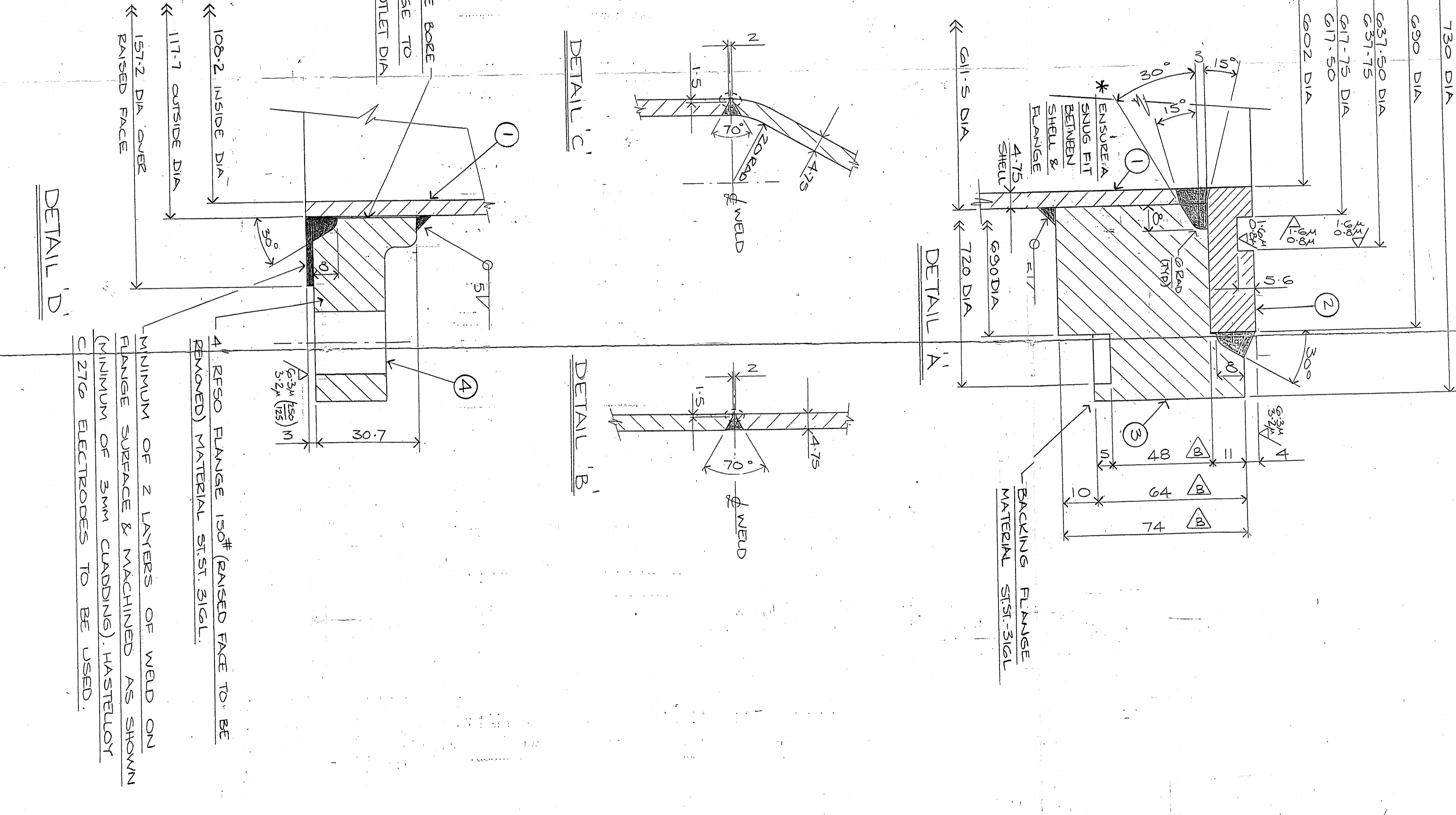
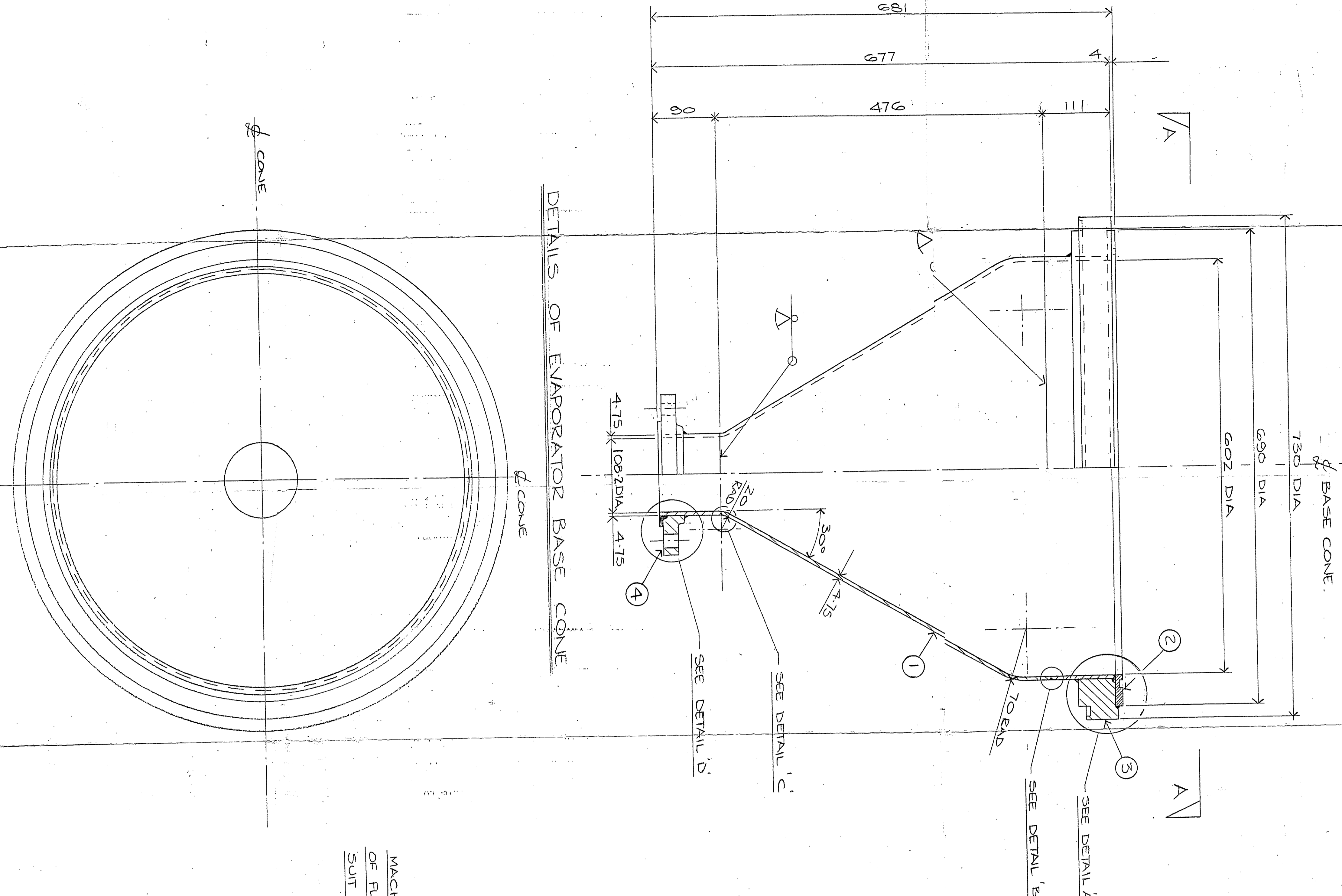
PROJECT No: **5693**

SCALE: **1 1/8" & 1-7/8"**

WORKS DRAWING	BUILDING	PLANT TA-177	SECTION	OX1B
DESIGNER	SYSTEMS			
DATE				
APPROVED				
DRAWING No.				

IMPERIAL CHEMICAL INDUSTRIES PLC
ENGINEERING DEPARTMENT

D/A7/15/S15.1



REV	DESCRIPTION	DATE	BY	CHKD
1	ISSUED FOR CONSTRUCTION	17.2.89		
2	REVISED			
3	REVISED			

NOTES

1. REF. DRAWINGS
2. ARRANGEMENT OF EVAPORATOR.
3. CALCULATION No. N00010072

37416.1

BASE CONE