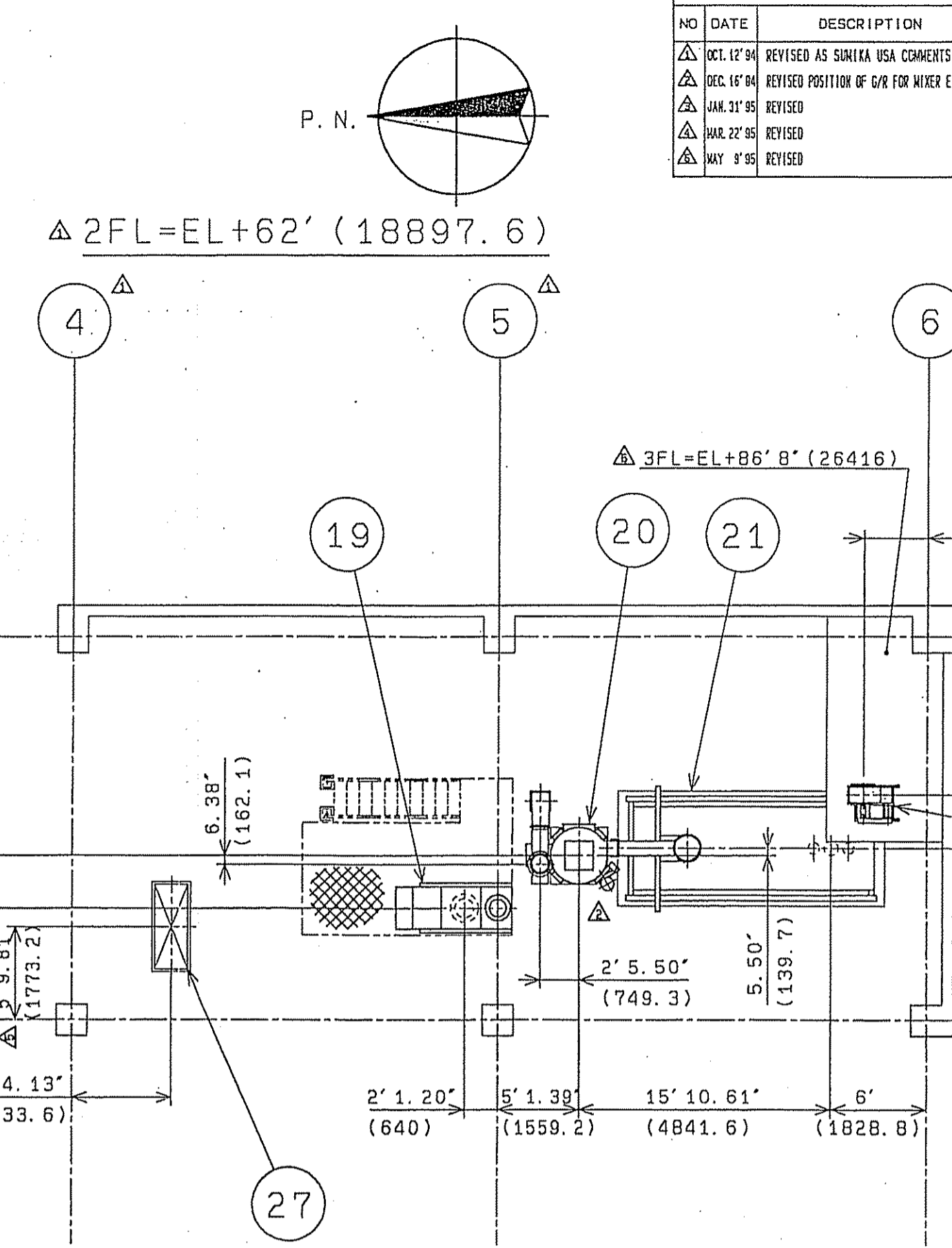
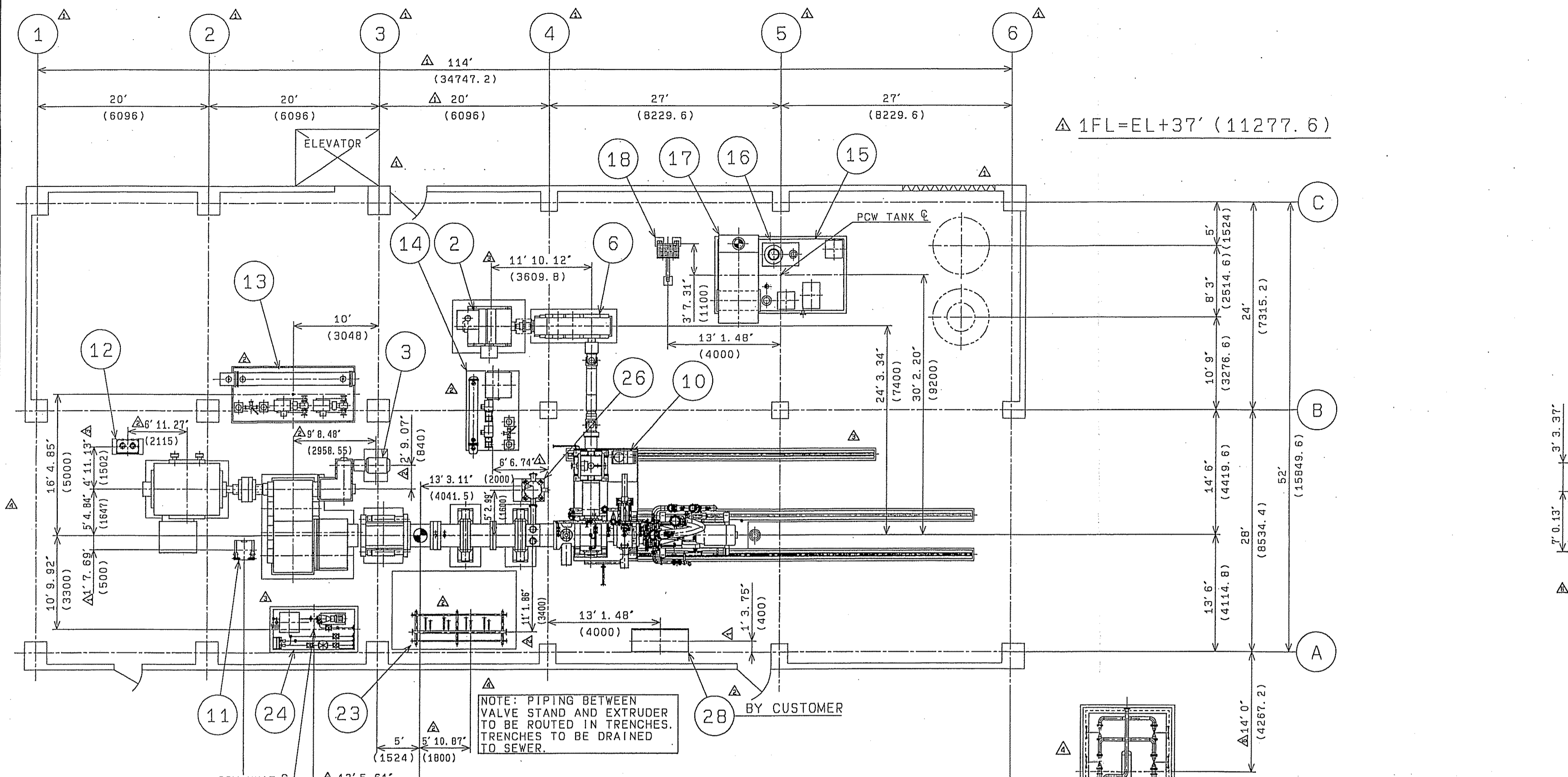
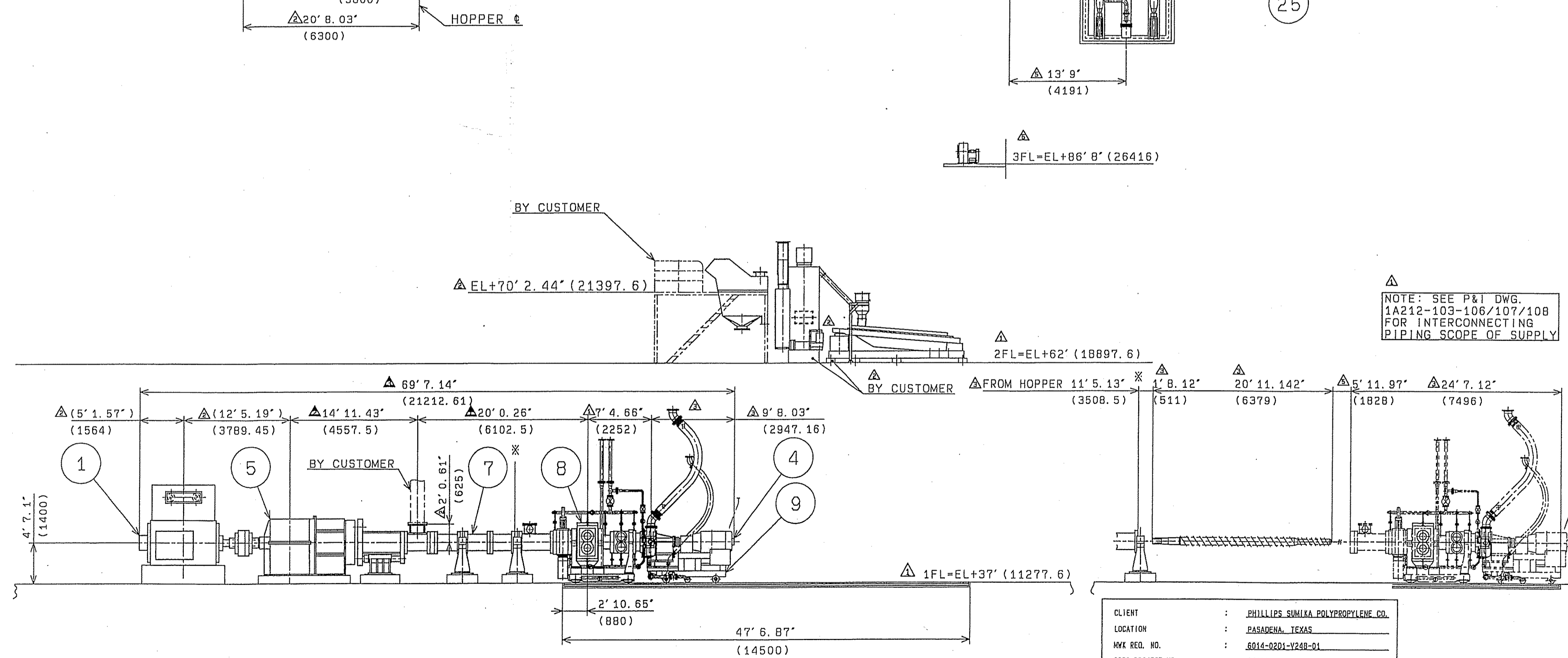


NO.	DATE	DESCRIPTION
△	DEC. 17 '84	REVISED AS SUMIKA USA COMMENTS
△	DEC. 18 '84	REVISED POSITION OF G/R FOR MIXER ETC.
△	MAR. 27 '85	REVISED
△	MAY 8 '85	REVISED



ITEM NO.	DESCRIPTION	QTY	UNIT PRICE	TOTAL PRICE
28	LOCAL START UP PANEL	1102	(500)	1102 (500)
27	VACUUM UNIT	1805	(230)	1805 (230)
26	VACUUM PUMP DRAIN POT	1323	(984)	1323 (984)
25	HOT OIL UNIT	17300	(25950)	17300 (25950)
24	CCW UNIT	5511	(8377)	5511 (8377)
23	VALVE STAND	2205	(2646)	2205 (2646)
22	EXHAUST FAN	441	(661)	441 (661)
21	VIBRATING CLASSIFIER	5840	(8760)	5840 (8760)
20	CENTRIFUGAL DRYER	8642	(13900)	8642 (13900)
19	OFF-DEWATERING SCREEN	1543	(1984)	1543 (1984)
18	PCW COOLER	2360	(2690)	2360 (2690)
17	PCW SCREEN	8818	(35935)	8818 (35935)
16	PCW PUMP	4000	(1630)	4000 (1630)
15	PCW TANK		FULL OF WATER	
14	LUBE OIL UNIT	2205	(2646)	2205 (2646)
13	LUBE OIL UNIT	3307	(3909)	3307 (3909)
12	LUBE OIL UNIT	1323	(1984)	1323 (1984)
11	HYDRAULIC OIL UNIT	551	(838)	551 (838)
10	HYDRAULIC OIL UNIT	2425	(3638)	2425 (3638)
9	UNDER WATER CUTTER	11203	(16535)	11203 (16535)
8	GEAR PUMP & S/C	92736	(139104)	92736 (139104)
7	CYLINDER & SCREW	77000	(115500)	77000 (115500)
6	SPEED REDUCER	19887	(24658)	19887 (24658)
5	SPEED REDUCER	112455	(168683)	112455 (168683)
4	CUTTER MOTOR	1410	(2115)	1410 (2115)
3	STARTING MOTOR	1808	(2712)	1808 (2712)
2	GEAR PUMP MOTOR	15788	(23682)	15788 (23682)
1	MIXER MOTOR	40572	(60858)	40572 (60858)
NO	NOMENCLATURE		STATIC LOAD (KGS)	STATIC LOAD + DYNAMIC LOAD (KGS)

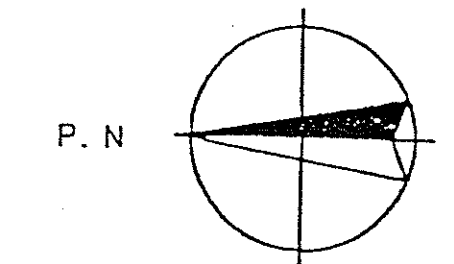


CLIENT :	PHILLIPS SUMIKA POLYPROPYLENE CO.
LOCATION :	PASADENA, TEXAS
MRK REQ. NO. :	5014-0201-Y288-01
SCEC PROJECT NO. :	13A61
PHILLIPS JOB ASSIGNMENT NO. :	46-9088
EXTRUDER AND AUXILIARIES :	
ITEM NO. :	28-5001 (25000233)
JSW JOB NO. :	MA3067D

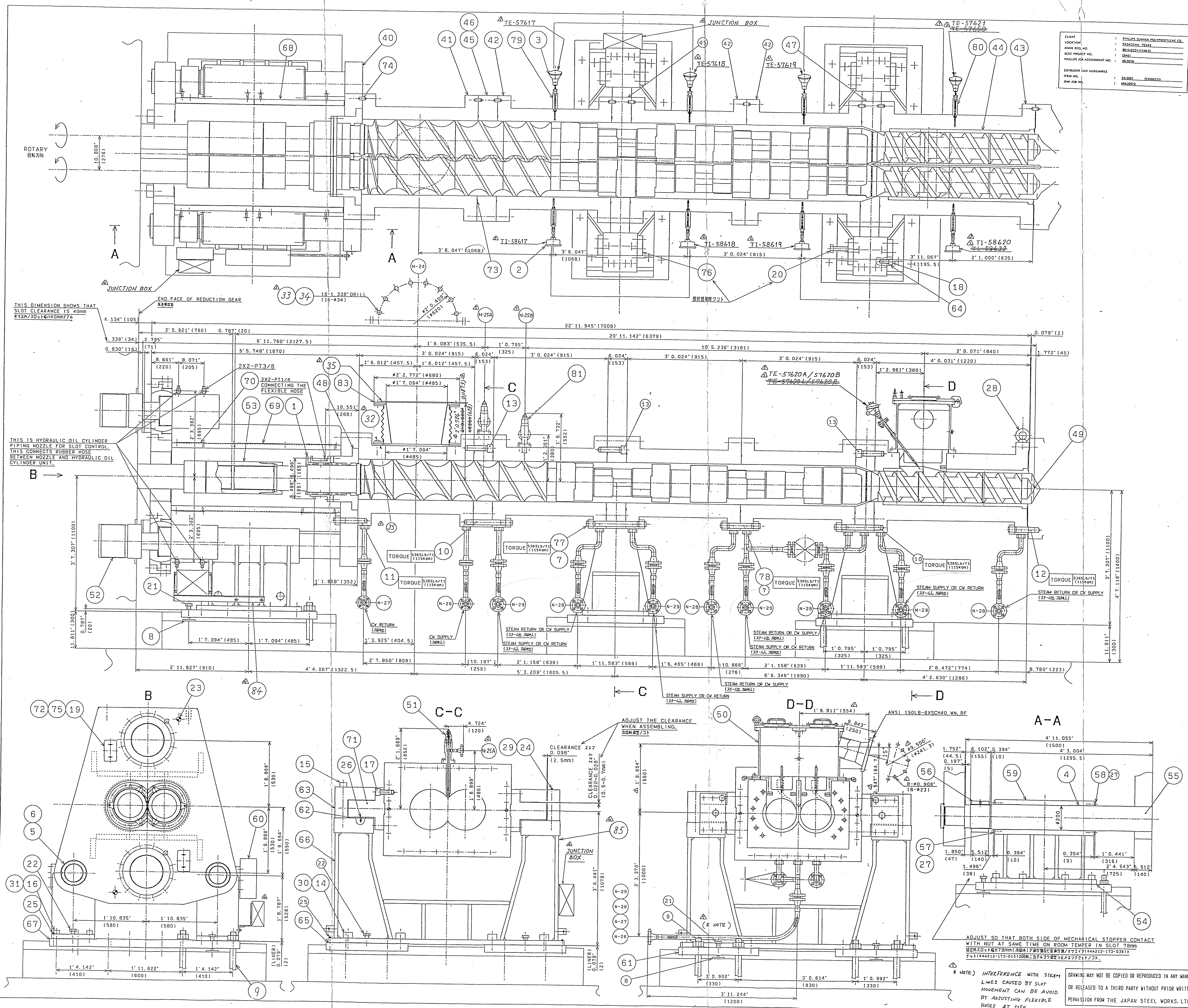
DRAWING MAY NOT BE COPIED OR REPRODUCED IN ANY MANNER OR RELEASED TO A THIRD PARTY WITHOUT PRIOR WRITTEN PERMISSION FROM THE JAPAN STEEL WORKS, LTD.

PC. NO.	NOMENCLATURE	DIM. SPEC. (OWG. NO. - PC. NO.)	MATERIAL	QTY	WEIGHT (KGS)
APPD.	H. MIZUGUCHI	GENERAL ARRANGEMENT	MA30670 X	1199	
REVIEW	T. MAKIDA				
DESIGNED	T. MAKIDA				
DRAWN	N/IZAKI	CMP305X-12SW			
THE JAPAN STEEL WORKS, LTD. HIROSHIMA PLANT		PURCHASER		USER	

CLIENT	MAZDA MOTOR CORP.
LOCATION	MAZDA MOTOR CORP.
NAME AND NO.	MAZDA MOTOR CORP.
PROJECT NO.	MAZDA MOTOR CORP.
DESIGNER	MAZDA MOTOR CORP.
CHECKER	MAZDA MOTOR CORP.
DATE	MAZDA MOTOR CORP.
SCALE	MAZDA MOTOR CORP.
REVISION	MAZDA MOTOR CORP.



NO.	DATE	DESCRIPTION	REVISION
1		ISSUE FOR FABRICATION	
2		REVISION	
3		REVISION	
4		REVISION	
5		REVISION	
6		REVISION	
7		REVISION	
8		REVISION	
9		REVISION	
10		REVISION	
11		REVISION	
12		REVISION	
13		REVISION	
14		REVISION	
15		REVISION	
16		REVISION	
17		REVISION	
18		REVISION	
19		REVISION	
20		REVISION	
21		REVISION	
22		REVISION	
23		REVISION	
24		REVISION	
25		REVISION	
26		REVISION	
27		REVISION	
28		REVISION	
29		REVISION	
30		REVISION	
31		REVISION	
32		REVISION	
33		REVISION	
34		REVISION	
35		REVISION	
36		REVISION	
37		REVISION	
38		REVISION	
39		REVISION	
40		REVISION	
41		REVISION	
42		REVISION	
43		REVISION	
44		REVISION	
45		REVISION	
46		REVISION	
47		REVISION	
48		REVISION	
49		REVISION	
50		REVISION	
51		REVISION	
52		REVISION	
53		REVISION	
54		REVISION	
55		REVISION	
56		REVISION	
57		REVISION	
58		REVISION	
59		REVISION	
60		REVISION	
61		REVISION	
62		REVISION	
63		REVISION	
64		REVISION	
65		REVISION	
66		REVISION	
67		REVISION	
68		REVISION	
69		REVISION	
70		REVISION	
71		REVISION	
72		REVISION	
73		REVISION	
74		REVISION	
75		REVISION	
76		REVISION	
77		REVISION	
78		REVISION	
79		REVISION	
80		REVISION	
81		REVISION	
82		REVISION	
83		REVISION	
84		REVISION	
85		REVISION	



NO.	DESCRIPTION	QTY	UNIT	REMARKS
85	FLAT HEAD BOLT	1	PC	
84	SUPPORT	1	PC	
83	EXPANSION JOINT	1	PC	
82	WIRE UNDER PROCESS	1	PC	
81	WIRE UNDER PROCESS	1	PC	
80	WIRE UNDER PROCESS	1	PC	
79	WIRE UNDER PROCESS	1	PC	
78	STUD BOLT	3	PC	
77	STUD BOLT	20	PC	
76	WASHER	20	PC	
75	SPACER	4	PC	
74	PIN	2	PC	
73	GASKET	7	PC	
72	LINEAR	2	PC	
71	COVER	4	PC	
70	COVER	1	PC	
69	COVER	1	PC	
68	COVER	2	PC	
67	PLATE	1	PC	
66	LINEAR SUPPORT	2	PC	
65	LINEAR	4	PC	
64	STOPPER	4	PC	
63	RETAINER PLATE	4	PC	
62	LINEAR	4	PC	
61	PLATE	4	PC	
60	GUIDE BAR SUPPORT	1	PC	
59	GUIDE BAR	2	PC	
58	RETAINER PLATE	2	PC	
57	RETAINER PLATE	2	PC	
56	NUT	2	PC	
55	GUIDE BAR	2	PC	
54	LINEAR	2	PC	
53	CONNECTION PART OF SCREW	4	PC	
52	HYDRAULIC OIL CYLINDER	1	PC	
51	LINEAR	1	PC	
50	SCREW ASSY	1	PC	
49	SCREW ASSY	1	PC	
48	ADAPTER	1	PC	
47	DUCT MAN	1	PC	
46	SCREW ADDITIONAL ONE	1	PC	
45	DUCT MAN	2	PC	
44	CYLINDER LINER	1	PC	
43	TIP CYLINDER	1	PC	
42	MIDDLE CYLINDER	1	PC	
41	HOPPER CYLINDER	1	PC	
40	FLANGE	1	PC	
35	GASKET	2	PC	
34	HEX NUT	16	PC	
33	HEX BOLT	16	PC	
32	HEX BOLT	8	PC	
31	PLAIN WASHER	8	PC	
30	PLAIN WASHER	16	PC	
29	PLAIN WASHER	8	PC	
28	EYE BOLT	4	PC	
27	FLAT HEAD BOLT	16	PC	
26	FLAT HEAD BOLT	12	PC	
25	KNOCK BOLT	8	PC	
24	REAMER BOLT	2	PC	
23	BOLT WITH DOG POINT	12	PC	
22	BOLT WITH DOG POINT	12	PC	
21	BOLT WITH DOG POINT	32	PC	
20	BOLT WITH DOG POINT	4	PC	
19	HEX SOC CAP SCREW	4	PC	
18	HEX SOC CAP SCREW	24	PC	
17	HEX SOC CAP SCREW	8	PC	
16	HEX SOC CAP SCREW	16	PC	
15	HEX SOC CAP SCREW	12	PC	
14	HEX SOC CAP SCREW	16	PC	
13	HEX SOC CAP SCREW	6	PC	
12	STUD BOLT	20	PC	
11	STUD BOLT	20	PC	
10	STUD BOLT	4	PC	
09	FOUNDATION BOLT	24	PC	
08	FLANGE	32	PC	
07	HEX NUT	1	PC	
06	BRG NUT	2	PC	
05	BRG NUT	2	PC	
04	BU BUSH	8	PC	
03	THERMO COUPLE	4	PC	
02	THERMOMETER	4	PC	
01	GLAND SEAL	2	PC	
00	SCREW LINER ASSY	1	PC	
85	NOMENCLATURE			

IDENTIFICATION

INSTRUMENT

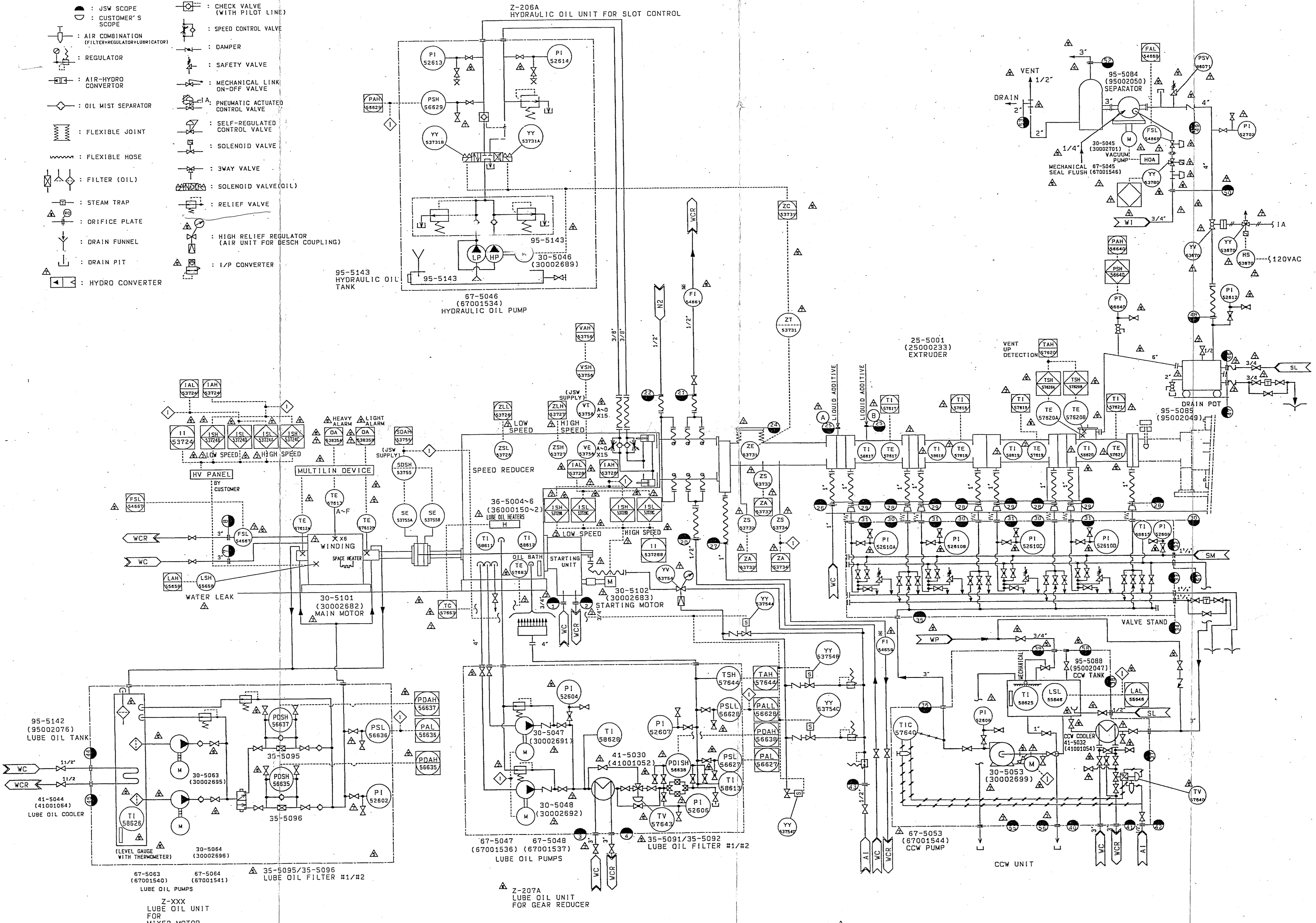
- △ : DCS/MMI INDICATION (UNLESS OTHERWISE SPECIFIED) (BY CUSTOMER)
- ◻ : PROGRAMMABLE LOGIC CONTROL (BY CUSTOMER)
- : MOUNTED ON TRANSDUCER CUBICLE (BY CUSTOMER)
- : MOUNTED BEHIND TRANSDUCER CUBICLE (BY CUSTOMER)
- : INDICATING LAMP ON HOT OIL PANEL
- : MOUNTED BEHIND HOT OIL PANEL
- : LOCAL INSTRUMENT

MISCELLANEOUS

- ◇ : SEQUENCE
- ◇ : INTERLOCK
- : FLUID
- ⊖ : BATTERY LIMIT & CONNECTION NUMBER
- ⊖ : JSW SCOPE
- ⊖ : CUSTOMER'S SCOPE
- ⊖ : AIR-HYDRO CONVERTOR
- ⊖ : REGULATOR
- ⊖ : AIR-HYDRO CONVERTOR
- ⊖ : OIL MIST SEPARATOR
- ⊖ : FLEXIBLE JOINT
- ⊖ : FLEXIBLE HOSE
- ⊖ : FILTER (OIL)
- ⊖ : STEAM TRAP
- ⊖ : ORIFICE PLATE
- ⊖ : DRAIN FUNNEL
- ⊖ : DRAIN PIT
- ⊖ : HYDRO CONVERTER

VALVES

- ⊖ : GATE VALVE
- ⊖ : GLOBE VALVE
- ⊖ : BALL VALVE
- ⊖ : CHECK VALVE
- ⊖ : CHECK VALVE
- ⊖ : CHECK VALVE (WITH PILOT LINE)
- ⊖ : SPEED CONTROL VALVE
- ⊖ : DAMPER
- ⊖ : SAFETY VALVE
- ⊖ : MECHANICAL LINK ON-OFF VALVE
- ⊖ : PNEUMATIC ACTUATED CONTROL VALVE
- ⊖ : SELF-REGULATED CONTROL VALVE
- ⊖ : SOLENOID VALVE
- ⊖ : 3WAY VALVE
- ⊖ : SOLENOID VALVE(OIL)
- ⊖ : RELIEF VALVE
- ⊖ : HIGH RELIEF REGULATOR (AIR UNIT FOR BESCH COUPLING)
- ⊖ : I/P CONVERTER



NO.	SIZE	QTY	ANSI	FACE	NOZZLE	REMARKS
N-58	3/4"	1	ANSI150°	RF	BFW INLET FOR CCW UNIT (BLIND)	
N-57	3"	1	ANSI150°	RF	CCW OUTLET FOR VALVE STAND	
N-56	1"	1	ANSI150°	RF	FOR CCW UNIT DRAIN	
N-55	1"	1	ANSI150°	RF	FOR CCW UNIT	
N-53	3/4"	1	NPT	RF	DRAIN FOR SEPARATOR	
N-52	3"	1	NPT	RF	GAS OUTLET FOR SEPARATOR	
N-50	3/4"	1	NPT	RF	WI INLET FOR VALVUM PUMP	
N-49	4"	1	ANSI150°	RF	GAS INLET FOR VALVUM PUMP	
N-48	4"	1	ANSI150°	RF	GAS OUTLET FOR DRAIN POT	
N-47	3/4"	1	ANSI150°	RF	SL DRAIN FOR DRAIN POT	
N-46	3/4"	1	ANSI150°	RF	SL INLET FOR DRAIN POT	
N-45	1 1/2"	1	ANSI150°	RF	WC INLET FOR MAIN MOTOR LUBE OIL COOLER	
N-44	1 1/2"	1	ANSI150°	RF	WC INLET FOR MAIN MOTOR LUBE OIL COOLER	
N-43	1 1/2"	1	ANSI150°	RF	AT INLET FOR DRAIN POT	
N-42	1 1/2"	1	ANSI150°	RF	AT INLET FOR CCW UNIT	
N-41	3"	1	ANSI150°	RF	WC OUTLET FOR CCW COOLER	
N-40	3"	1	ANSI150°	RF	WC INLET FOR CCW COOLER	
N-39	3/4"	1	ANSI150°	RF	WC INLET FOR CCW UNIT	
N-38	1 1/2"	1	ANSI150°	RF	SL INLET FOR CCW UNIT	
N-37	3"	1	ANSI150°	RF	CCW RETURN FOR CCW UNIT	
N-36	3"	1	ANSI150°	RF	CCW OUTLET FOR CCW UNIT	
N-35	3"	1	ANSI150°	RF	FOR VALVE STAND	
N-34	1 1/2"	1	ANSI1600°	RF	SM DRAIN	
N-33	1 1/2"	1	ANSI150°	RF	CCW DRAIN FOR VALVE STAND	
N-32	1 1/2"	1	ANSI1600°	RF	SM INLET FOR VALVE STAND	
N-31	1 1/2"	4	ANSI1600°	RF	CCW INLET OR SM INLET FOR VALVE STAND	
N-30	1 1/2"	4	ANSI1600°	RF	CCW OUTLET OR SM INLET FOR VALVE STAND	
N-29	1"	4	ANSI1600°	RF	CCW INLET OR SM INLET FOR CYLINDERS	
N-28	1"	4	ANSI1600°	RF	WC INLET FOR HOPPER CYLINDER	
N-27	1"	1	ANSI150°	RF	WC OUTLET FOR HOPPER CYLINDER	
N-26	1"	1	ANSI150°	RF	WC INLET FOR HOPPER CYLINDER	
N-25A/B	1/2"	2	ANSI1600°	RF	FOR LIQUID ADD. FOR INJECTION NOZZLE	
N-24	SPECIAL	1			TO HOPPER	
N-22	1 1/2"	1	ANSI150°	RF	WC INLET FOR GLAND SEAL	
N-21	1 1/2"	1	ANSI150°	RF	WC OUTLET FOR GLAND SEAL	
N-20	1 1/2"	1	ANSI150°	RF	WC INLET FOR GLAND SEAL	
N-19	3"	1	ANSI150°	RF	WC INLET FOR MIXER MOTOR	
N-18	3"	1	ANSI150°	RF	WC INLET FOR MIXER MOTOR	
N-17	3"	1	ANSI150°	RF	WC INLET FOR LUBE OIL COOLER	
N-16	3/4"	1	ANSI150°	RF	WC INLET FOR LUBE OIL COOLER	
N-15	3/4"	1	ANSI150°	RF	WC INLET FOR STARTING UNIT	
N-14	3/4"	1	ANSI150°	RF	WC INLET FOR STARTING UNIT	

NOZZLE LIST

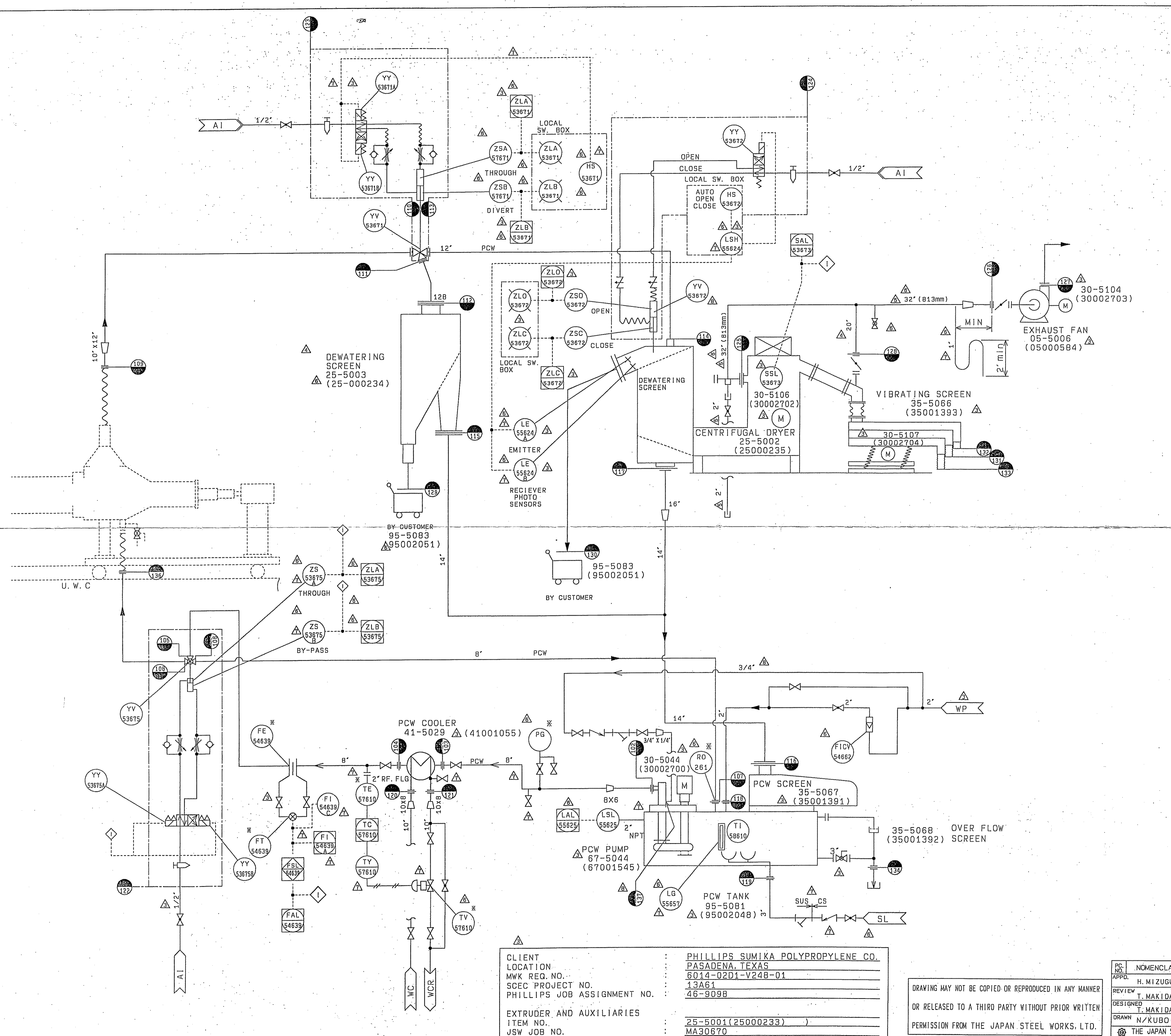
CLIENT : PHILLIPS SUMIKA POLYPROPYLENE CO.
 LOCATION : PASADENA, TEXAS
 MWK REQ. NO. : 6014-0201-V248-01
 SCEC PROJECT NO. : 13A61
 PHILLIPS JOB ASSIGNMENT NO. : 46-909B
 EXTRUDER AND AUXILIARIES : 25-5001(25000233)
 ITEM NO. : MA30670
 JSW JOB NO. :

DRAWING MAY NOT BE COPIED OR REPRODUCED IN ANY MANNER OR RELEASED TO A THIRD PARTY WITHOUT PRIOR WRITTEN PERMISSION FROM THE JAPAN STEEL WORKS, LTD.

NO.	REVISION	DESCRIPTION	DATE	BY
1				
2				
3				
4				
5				
6				
7				
8				
9				
10				
11				
12				

0A212-103:106

REVISION				
NO.	DATE	DESCRIPTION	APPROVED & REFERENCE, DRAWING NO. REVISION NO.	BY
Δ	OCT. 4 '94	SECOND ISSU.		K. S.
Δ	DEC. 7 '94			T. M.
Δ	DEC. 7 '94			T. M.
Δ	MAR. 17 '95	UP-DATED		T. M.
Δ	MAR. 17 '95	UP-DATED		T. M.
Δ	MAR. 27 '95			Y. S.



N-137	1/4"	1	1/4-18N.P.S.F	-	PCW PUMP FLUSH IN
N-136	8"	1	ANSI 150 ^{LB}	RF	PCW INLET
N-134	6"	1	PIPE END	-	OVER FLOW FOR PCW TANK
N-133	8"	1	PIPE END	-	UNDER SIZE FOR PELLET OUTLET
N-132	8"	1	PIPE END	-	OVER SIZE FOR PELLET OUTLET
N-131	14"	1	PIPE END	ΔFF	NORMAL SIZE FOR PELLET OUTLET
N-130	13"	1	SPECIAL	-	AGGLOMERATE OUTLET FOR DEWATERING SCREEN
N-129	19.7" X 9"	1	SPECIAL	-	OFF PELLET OUTLET FOR PRE-DEWATERING SCREEN
N-128	20"	1	ANSI 150 ^{LB} EXCEPT THICK.	FF	AIR OUTLET FOR CHUTE
N-127	20"	1	SPECIAL 23" X 16.38"	ΔFF	AIR DISCHARGE FOR EXHAUST FAN
N-126	20"	1	ANSI 150 ^{LB}	ΔFF	AIR SUCTION FOR DAMPER
N-125	22.8" X 18.18"	1	SPECIAL	FF	AIR OUTLET FOR PELLET DRYER
N-124	1 1/2"	1	NPT 1/2"	-	AIR INLET FOR AGGLOMERATE CATCHER
N-123	1 1/2"	1	NPT 1/2"	-	AIR INLET FOR DIVERTER VALVE
N-122	1 1/2"	1	NPT 1/2"	-	AIR INLET FOR 3 WAY BALL VALVE
N-121	8"	1	ANSI 150 ^{LB}	RF	WC OUTLET FOR PCW COOLER
N-120	8"	1	ANSI 150 ^{LB}	RF	WC INLET FOR PCW COOLER
N-119	3"	1	ANSI 150 ^{LB}	ΔRF	SL INLET
N-118	2"	1	ANSI 150 ^{LB}	ΔRF	BFW INLET
N-117	16"	1	ANSI 150 ^{LB}	RF	PCW OUTLET FOR DEWATERING SCREEN
N-116	14"	1	ANSI 150 ^{LB} EXCEPT THICK.	FF	PCW RETURN
N-115	14"	1	ANSI 150 ^{LB}	ΔRF	PCW OUTLET FOR OFF-DEWATERING SCREEN
N-114	12"	1	ANSI 150 ^{LB} EXCEPT THICK.	ΔRF	PCW INLET FOR DEWATERING SCREEN
N-113	12"	1	ANSI 150 ^{LB}	RF	PCW OUTLET FOR DIVERTER VALVE
N-112	12"	1	ANSI 150 ^{LB}	RF	PCW INLET FOR OFF-DEWATERING SCREEN
N-111	12"	1	ANSI 150 ^{LB}	RF	PCW INLET FOR DIVERTER VALVE
N-110	12"	1	ANSI 150 ^{LB}	RF	PCW INLET FOR DIVERTER VALVE
N-109	10"	1	ANSI 150 ^{LB}	RF	PCW OUTLET FOR CUTTER BOX
N-108	8"	1	ANSI 150 ^{LB}	RF	PCW OUTLET FOR 3 WAY BALL VALVE
N-107	8"	1	ANSI 150 ^{LB}	ΔRF	PCW INLET FOR PCW BYPASS
N-106	8"	1	ANSI 150 ^{LB}	RF	PCW OUTLET FOR 3 WAY BALL VALVE
N-105	8"	1	ANSI 150 ^{LB}	RF	PCW INLET FOR 3 WAY BALL VALVE
N-104	8"	1	ANSI 150 ^{LB}	RF	PCW OUTLET FOR PCW COOLER
N-103	8"	1	ANSI 150 ^{LB}	RF	PCW INLET FOR PCW COOLER
N-102	6"	1	ANSI 150 ^{LB}	RF	TO PUMP SUCTION

mk 9-12R
SEC 4
抜換 1
計 2R+10

図 2
図 1
図 1
図 1

NOZZLE NO.	NOZZLE SIZE	REG'D NO.	RATING	FACE FLANGE	SERVICE
NOZZLE LIST					

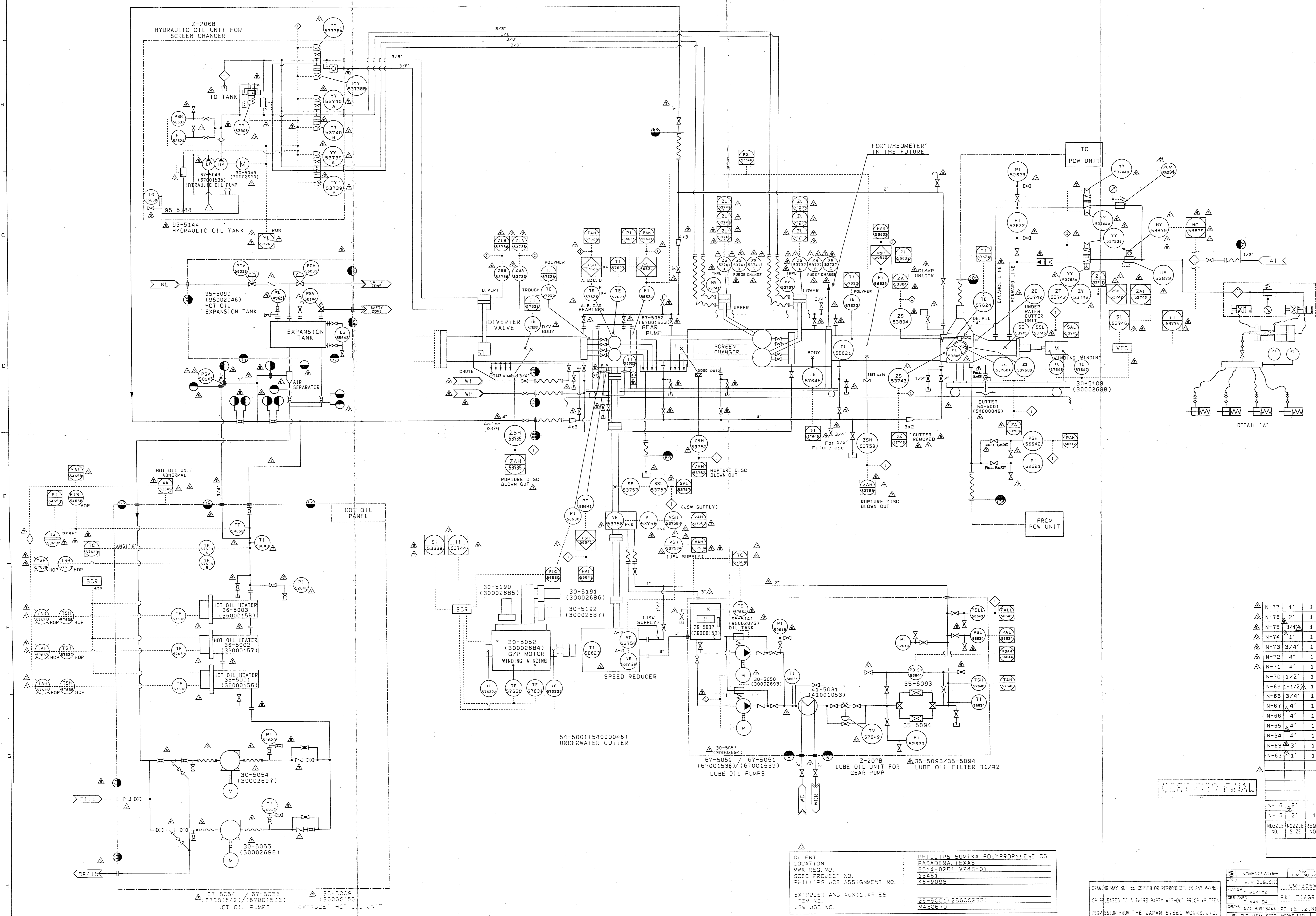
CLIENT : PHILLIPS SUMIKA POLYPROPYLENE CO.
 LOCATION : PASADENA, TEXAS
 MWK REQ. NO. : 6014-02D1-V248-01
 SEC PROJECT NO. : 13A61
 PHILLIPS JOB ASSIGNMENT NO. : 46-909B

EXTRUDER AND AUXILIARIES : 25-5001 (25000233)
 ITEM NO. :
 JSW JOB NO. : MA30670

DRAWING MAY NOT BE COPIED OR REPRODUCED IN ANY MANNER
 OR RELEASED TO A THIRD PARTY WITHOUT PRIOR WRITTEN PERMISSION FROM THE JAPAN STEEL WORKS, LTD.

PC. NO.	NOMENCLATURE	DIM. SPEC. (DWG. NO., PC. NO.)	MATERIAL	SPED. REQ. (QTY. REQ. / QTY. SUPPL.)	WEIGHT (KG)	REMARKS
APPRO.	H. MIZUGUCHI	CMP305X-12SW				
REVIEW	T. MAKIDA	P&I DIAGRAM (3/3)	MA30670-X			SCALE: NOT
DESIGNED	T. MAKIDA					DATE COMP. MAR. 8 '95
DRAWN	N/KUBO(T)	PELLET DRYING SECTION				ASS'Y DWG. NO.
THE JAPAN STEEL WORKS, LTD. HIROSHIMA PLANT		1 A 2 1 2 - 1 0 3 : 1 0 8				

NO.	DATE	DESCRIPTION	REVISION	BY
1				
2				
3				
4				
5				
6				
7				
8				
9				
10				
11				
12				



NO.	SIZE	QTY	ANSI	TYPE	REMARKS
N-77	1"	1	ANSI300	RF	
N-76	2"	1	ANSI300	RF	
N-75	3/4"	1	ANSI300	RF	SAFETY VALVE
N-74	1"	1	ANSI150	RF	SAFETY VALVE
N-73	3/4"	1	ANSI150	RF	SCW INLET
N-72	4"	1	ANSI300	RF	HOT OIL OUTLET
N-71	4"	1	ANSI300	RF	FOR AIR SEPARATOR
N-70	1/2"	1	ANSI150	RF	HOT OIL RETURN
N-69	1-1/2"	1	ANSI150	RF	FOR CUTTER UNIT
N-68	3/4"	1	ANSI150	RF	FOR D/VY CHUTE
N-67	4"	1	ANSI300	RF	FOR G/P S/C D/V D/H
N-66	4"	1	ANSI300	RF	HOT OIL INLET
N-65	4"	1	ANSI300	RF	FOR G/P S/C RETURN
N-64	4"	1	ANSI300	RF	FOR HOT OIL UNIT
N-63	3"	1	ANSI150	RF	HOT OIL OUTLET
N-62	1"	1	ANSI150	RF	FOR HOT OIL UNIT

NO.	NOZZLE NO.	NOZZLE SIZE	NOZZLE RATING	FACE	FLANGE	SERVICE
N-6	2"	1	ANSI150	RF		FOR COOLERS
N-5	2"	1	ANSI150	RF		FOR COOLERS

NOZZLE LIST

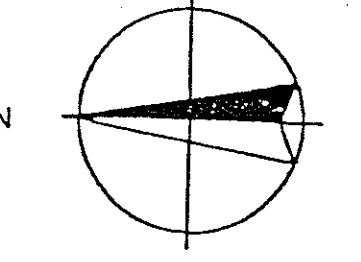
CLIENT : PHILLIPS SUMIKA POLYPROPYLENE CO.
 LOCATION : PASADENA, TEXAS
 MWK REQ. NO. : 6014-0201-V28E-01
 SOEC PROJECT NO. : 13A61
 PHILLIPS JOE ASSIGNMENT NO. : 45-8098

EXTRUDER AND AUXILIARIES : 25-5001(25002225)
 ITEM NO. : MISC670
 JEW JOB NO. :

DRW MAY NOT BE COPIED OR REPRODUCED IN ANY MANNER
 OR RELEASED TO A THIRD PARTY WITHOUT PRIOR WRITTEN
 PERMISSION FROM THE JAPAN STEEL WORKS, LTD.

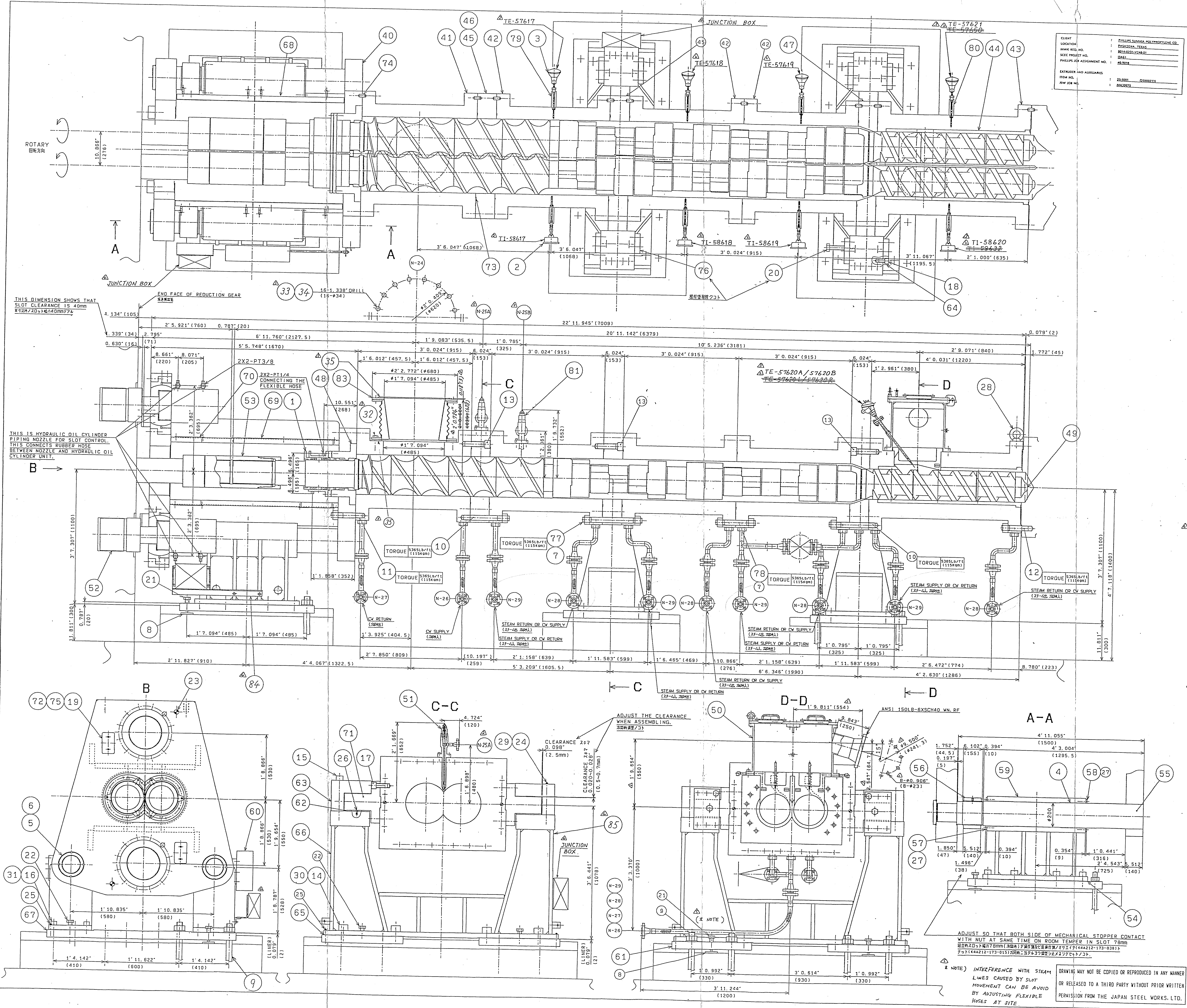
NO.	NOMENCLATURE	QTY	SPEC.	MATERIAL	REMARKS
1	MISC670	1	ANSI150	RF	FOR COOLERS
2	MISC670	1	ANSI150	RF	FOR COOLERS

CLIENT: FUJIKURA STEEL WORKS LTD.
LOCATION: HIROSHIWA PLANT
SCALE: 1:10
DATE: 2002.12.10
DRAWN: N/IZAKI
CHECKED: M/MAKIMURA
APPROVED: M/MAKIMURA



REVISION TABLE

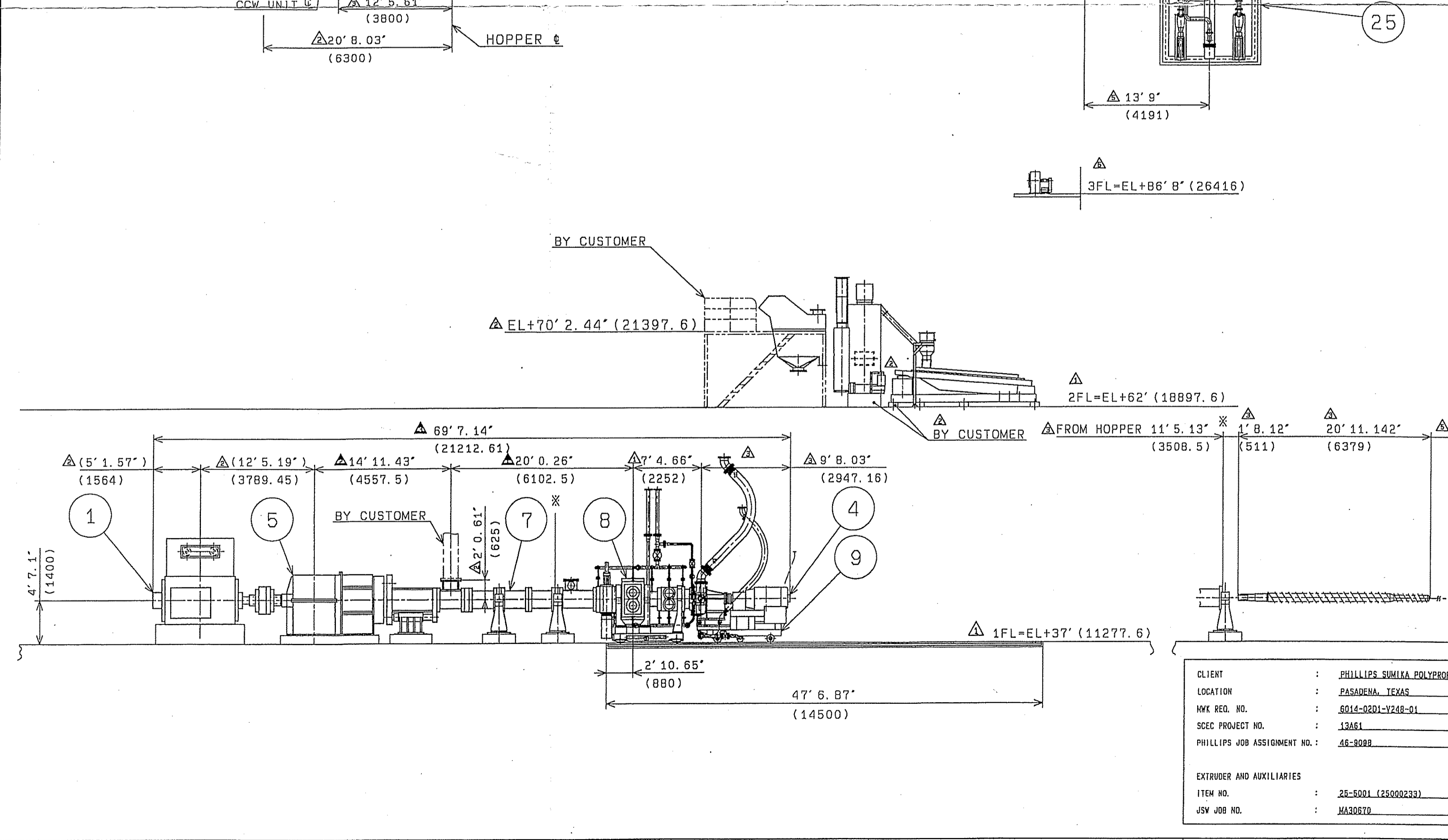
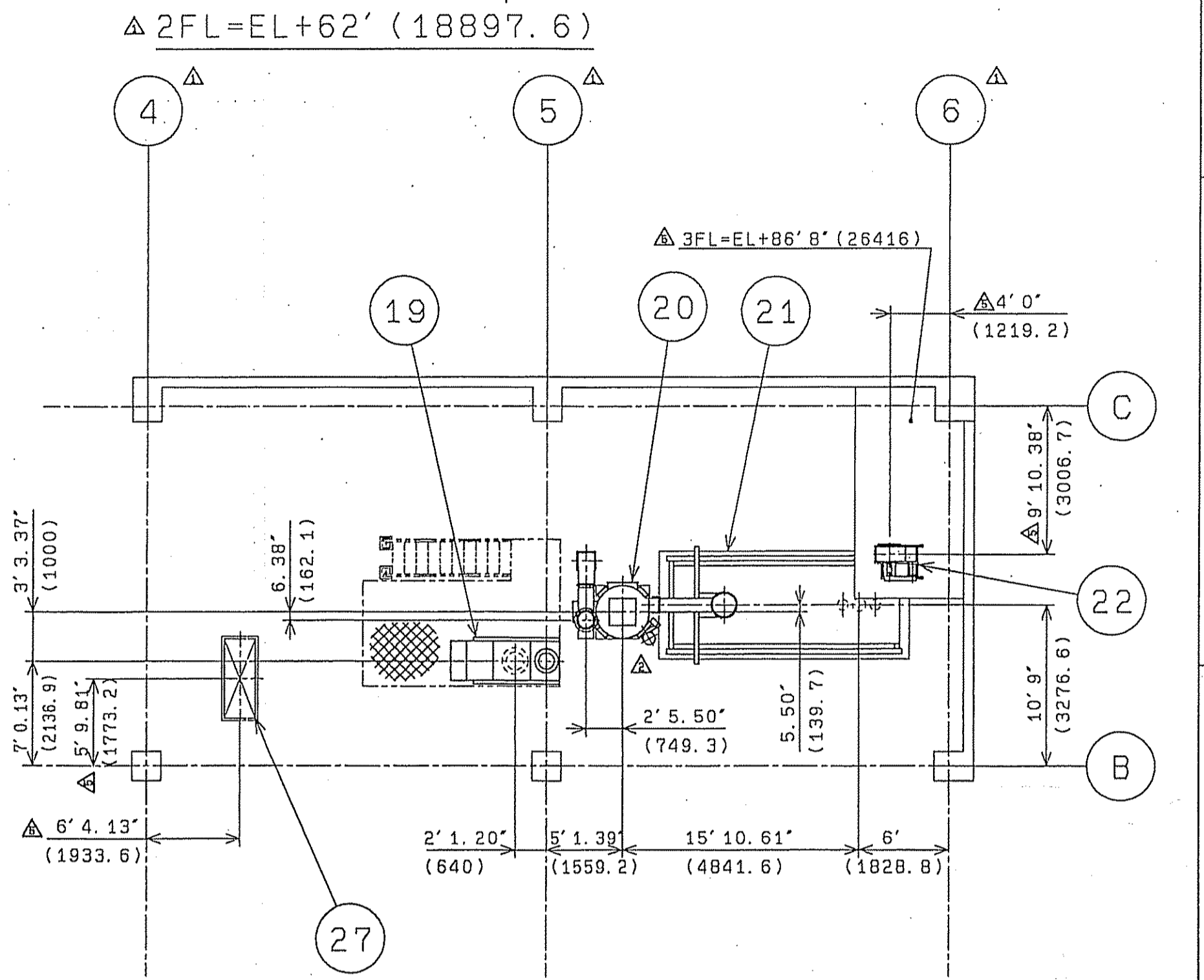
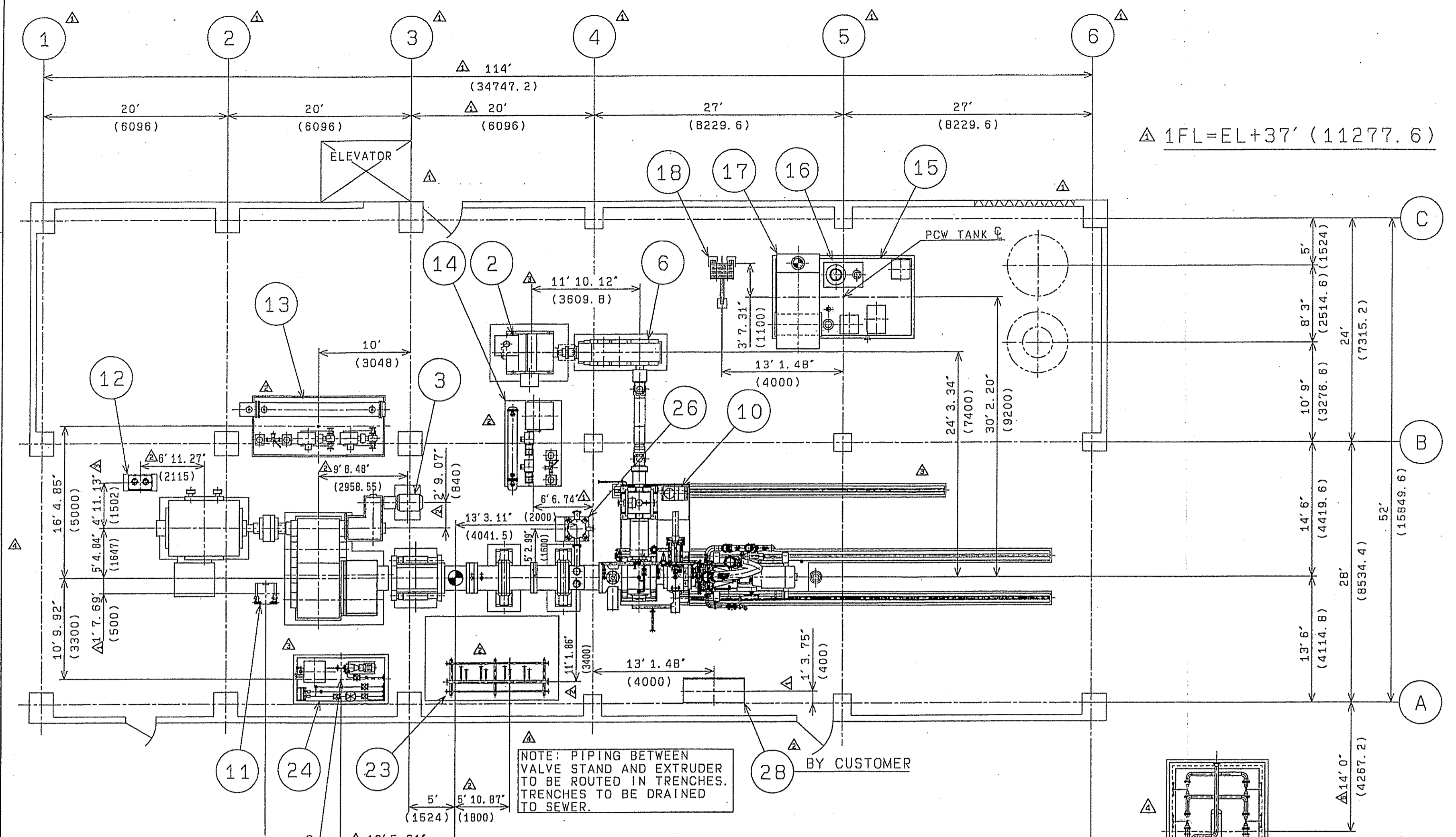
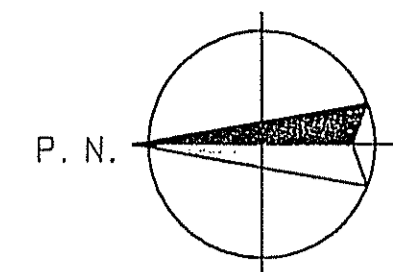
NO.	DATE	DESCRIPTION	BY	CHK
1		ISSUED FOR FABRICATION		
2		CHANGED THE TAG NO. OF THE PARTS		
3		CHANGED THE TAG NO. OF THE PARTS		
4		CHANGED THE TAG NO. OF THE PARTS		



ITEM LIST

NO.	DESCRIPTION	QTY	UNIT	REMARKS
1	FLAT HEAD BOLT	16	PCS	
2	FLAT HEAD BOLT	16	PCS	
3	FLAT HEAD BOLT	16	PCS	
4	FLAT HEAD BOLT	16	PCS	
5	FLAT HEAD BOLT	16	PCS	
6	FLAT HEAD BOLT	16	PCS	
7	FLAT HEAD BOLT	16	PCS	
8	FLAT HEAD BOLT	16	PCS	
9	FLAT HEAD BOLT	16	PCS	
10	FLAT HEAD BOLT	16	PCS	
11	FLAT HEAD BOLT	16	PCS	
12	FLAT HEAD BOLT	16	PCS	
13	FLAT HEAD BOLT	16	PCS	
14	FLAT HEAD BOLT	16	PCS	
15	FLAT HEAD BOLT	16	PCS	
16	FLAT HEAD BOLT	16	PCS	
17	FLAT HEAD BOLT	16	PCS	
18	FLAT HEAD BOLT	16	PCS	
19	FLAT HEAD BOLT	16	PCS	
20	FLAT HEAD BOLT	16	PCS	
21	FLAT HEAD BOLT	16	PCS	
22	FLAT HEAD BOLT	16	PCS	
23	FLAT HEAD BOLT	16	PCS	
24	FLAT HEAD BOLT	16	PCS	
25	FLAT HEAD BOLT	16	PCS	
26	FLAT HEAD BOLT	16	PCS	
27	FLAT HEAD BOLT	16	PCS	
28	FLAT HEAD BOLT	16	PCS	
29	FLAT HEAD BOLT	16	PCS	
30	FLAT HEAD BOLT	16	PCS	
31	FLAT HEAD BOLT	16	PCS	
32	FLAT HEAD BOLT	16	PCS	
33	FLAT HEAD BOLT	16	PCS	
34	FLAT HEAD BOLT	16	PCS	
35	FLAT HEAD BOLT	16	PCS	
36	FLAT HEAD BOLT	16	PCS	
37	FLAT HEAD BOLT	16	PCS	
38	FLAT HEAD BOLT	16	PCS	
39	FLAT HEAD BOLT	16	PCS	
40	FLAT HEAD BOLT	16	PCS	
41	FLAT HEAD BOLT	16	PCS	
42	FLAT HEAD BOLT	16	PCS	
43	FLAT HEAD BOLT	16	PCS	
44	FLAT HEAD BOLT	16	PCS	
45	FLAT HEAD BOLT	16	PCS	
46	FLAT HEAD BOLT	16	PCS	
47	FLAT HEAD BOLT	16	PCS	
48	FLAT HEAD BOLT	16	PCS	
49	FLAT HEAD BOLT	16	PCS	
50	FLAT HEAD BOLT	16	PCS	
51	FLAT HEAD BOLT	16	PCS	
52	FLAT HEAD BOLT	16	PCS	
53	FLAT HEAD BOLT	16	PCS	
54	FLAT HEAD BOLT	16	PCS	
55	FLAT HEAD BOLT	16	PCS	
56	FLAT HEAD BOLT	16	PCS	
57	FLAT HEAD BOLT	16	PCS	
58	FLAT HEAD BOLT	16	PCS	
59	FLAT HEAD BOLT	16	PCS	
60	FLAT HEAD BOLT	16	PCS	
61	FLAT HEAD BOLT	16	PCS	
62	FLAT HEAD BOLT	16	PCS	
63	FLAT HEAD BOLT	16	PCS	
64	FLAT HEAD BOLT	16	PCS	
65	FLAT HEAD BOLT	16	PCS	
66	FLAT HEAD BOLT	16	PCS	
67	FLAT HEAD BOLT	16	PCS	
68	FLAT HEAD BOLT	16	PCS	
69	FLAT HEAD BOLT	16	PCS	
70	FLAT HEAD BOLT	16	PCS	
71	FLAT HEAD BOLT	16	PCS	
72	FLAT HEAD BOLT	16	PCS	
73	FLAT HEAD BOLT	16	PCS	
74	FLAT HEAD BOLT	16	PCS	
75	FLAT HEAD BOLT	16	PCS	
76	FLAT HEAD BOLT	16	PCS	
77	FLAT HEAD BOLT	16	PCS	
78	FLAT HEAD BOLT	16	PCS	
79	FLAT HEAD BOLT	16	PCS	
80	FLAT HEAD BOLT	16	PCS	
81	FLAT HEAD BOLT	16	PCS	
82	FLAT HEAD BOLT	16	PCS	
83	FLAT HEAD BOLT	16	PCS	
84	FLAT HEAD BOLT	16	PCS	
85	FLAT HEAD BOLT	16	PCS	

REVISION			
NO.	DATE	DESCRIPTION	BY
△	OCT. 12 '94	REVISED AS SUMIKA USA COMMENTS	K. S.
△	DEC. 15 '94	REVISED POSITION OF G/P FOR MIXER ETC.	K. S.
△	JAN. 21 '95	REVISED	K. S.
△	MAR. 22 '95	REVISED	K. S.
△	MAY. 8 '95	REVISED	K. S.



ITEM NO.	NO.	NOMENCLATURE	STATIC LOAD lb(kg)	DYNAMIC LOAD + STATIC LOAD lb(kg)	REMARKS
△	28	LOCAL START UP PANEL	1102 (500)	1102 (500)	△ BY CUSTOMER
△	27	VACUUM UNIT	2700 (1230)	2700 (1230)	
△	26	VACUUM PUMP DRAIN POT	1923 (800)	1984 (900)	
△	25	HOT OIL UNIT	17300 (7800)	25950 (11700)	
△	24	CCW UNIT	5511 (2500)	8377 (3800)	
△	23	VALVE STAND	1000 (450)	1200 (540)	
△	22	EXHAUST FAN	441 (200)	661 (300)	
△	21	VIBRATING CLASSIFIER	5840 (2600)	8760 (3900)	
△	20	CENTRIFUGAL DRYER	8642 (3920)	11354 (5150)	
△	19	OFF-DEWATERING SCREEN	1843 (838)	1900 (860)	
△	18	PCW COOLER	2360 (1100)	2690 (1200)	
△	17	PCW SCREEN	8818 (4000)	35935 (16300)	FULL OF WATER
△	16	PCW PUMP			
△	15	PCW TANK			
△	14	LUBE OIL UNIT	2205 (1000)	2646 (1200)	FOR G/P
△	13	LUBE OIL UNIT	3307 (1500)	3969 (1800)	FOR MIXER
△	12	LUBE OIL UNIT	1323 (600)	1984 (900)	FOR MAIN MOTOR
△	11	HYDRAULIC OIL UNIT	851 (380)	838 (380)	FOR SLOT
△	10	HYDRAULIC OIL UNIT	2425 (1100)	3638 (1650)	FOR S/C&D/V
△	9	UNDER WATER CUTTER	11023 (5000)	16535 (7500)	
△	8	GEAR PUMP & S/C	92736 (42000)	139104 (63000)	
△	7	CYLINDER & SCREW	77000 (35000)	115500 (52500)	
△	6	SPEED REDUCER	16097 (7300)	24255 (11000)	FOR G/P
△	5	SPEED REDUCER	112455 (51000)	168683 (76500)	FOR MIXER
△	4	CUTTER MOTOR	1410 (640)	2115 (960)	
△	3	STARTING MOTOR	1898 (860)	2716 (1236)	
△	2	GEAR PUMP MOTOR	15788 (7160)	23682 (10740)	
△	1	MIXER MOTOR	40572 (18400)	60858 (27600)	

CLIENT : PHILLIPS SUMIKA POLYPROPYLENE CO.
 LOCATION : PASADENA, TEXAS
 HWK REQ. NO. : 6014-0201-Y248-01
 SDEC PROJECT NO. : J3A61
 PHILLIPS JOB ASSIGNMENT NO. : 46-2088

EXTRUDER AND AUXILIARIES
 ITEM NO. : 28-5001 (25000223)
 JSW JOB NO. : MA30670

DRAWING MAY NOT BE COPIED OR REPRODUCED IN ANY MANNER
 OR RELEASED TO A THIRD PARTY WITHOUT PRIOR WRITTEN
 PERMISSION FROM THE JAPAN STEEL WORKS, LTD.

APPD. H. MIZUGUCHI	DESIGNED T. MAKIDA	DRAWN N/IZAKI	CMP305X-12SW
REVIEW T. MAKIDA	GENERAL ARRANGEMENT		MA30670 X
JOB NO. (SHEET NO.)		PURCHASER'S ORDER NO.	SCALE 1:100
DATE COMP. SEP. 2 '94		USER	DATE COMP. SEP. 2 '94
THE JAPAN STEEL WORKS, LTD. HIROSHIMA PLANT		1 A 2 1 2 - 1 0 0 : 0 6 9	

MWK 4
SDEC
2R+4
換機1
機1
機1
機2
計取1