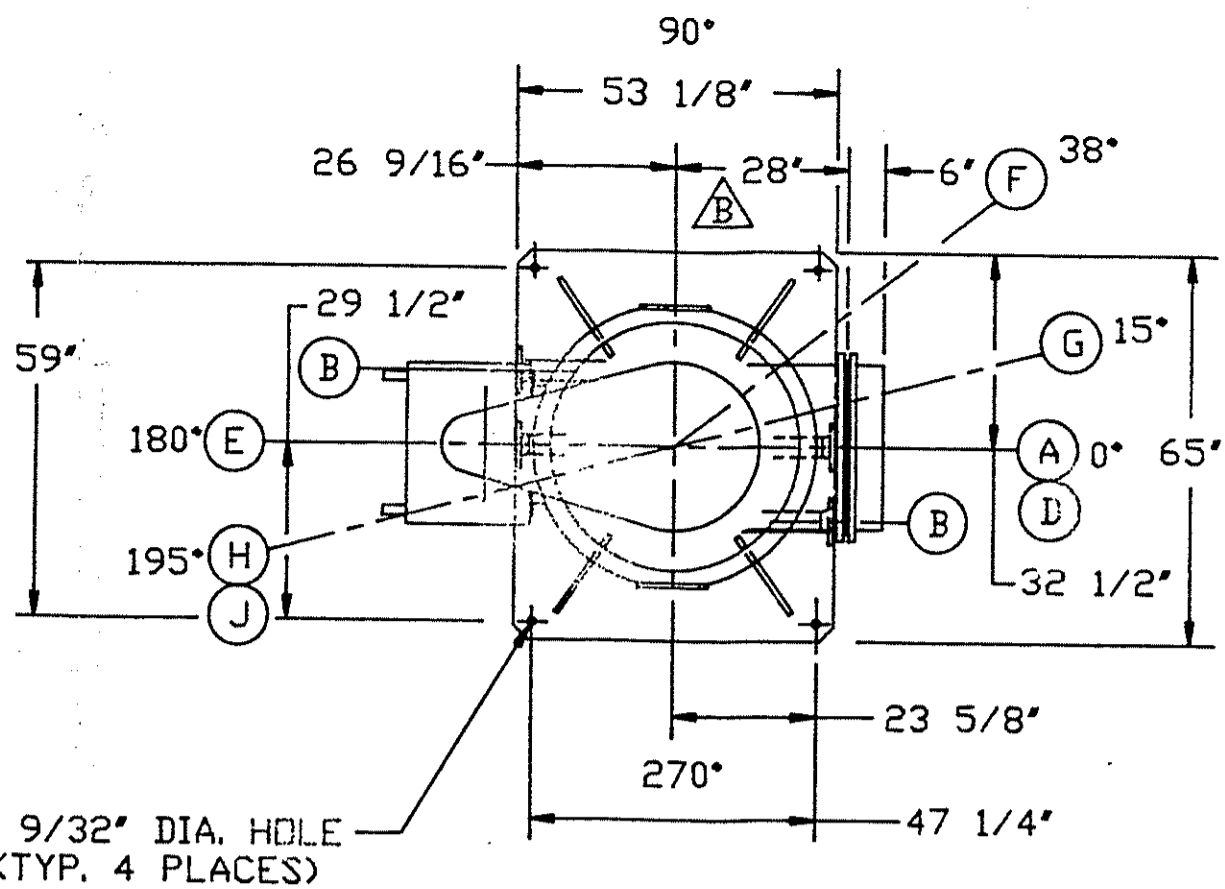


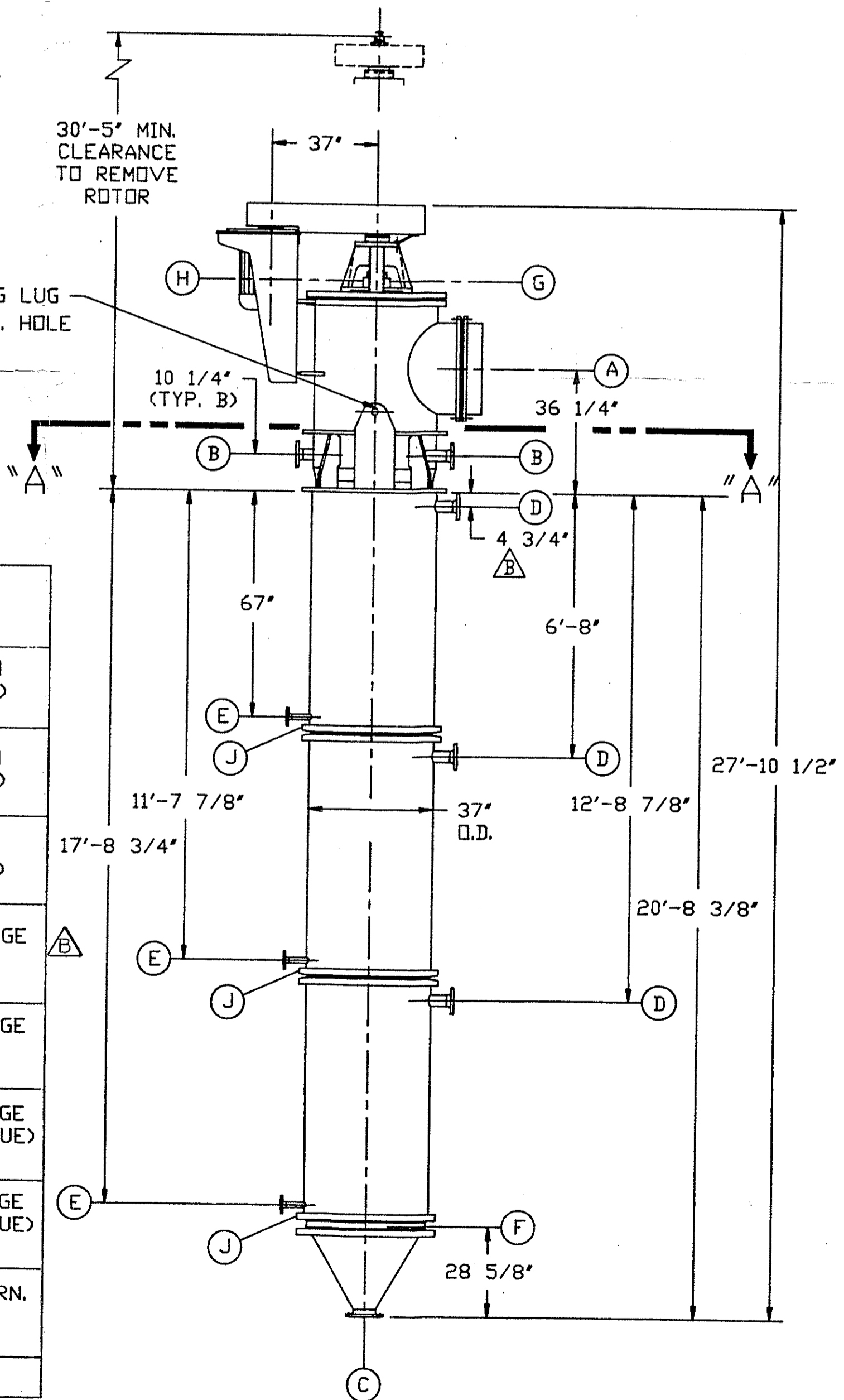
SECTION "A-A"

SCALE: 5/8"=1'-0"



NOTES:

- HEATING SURFACE-----150.7 SQ. FT.
- MAXIMUM ALLOWABLE WORKING PRESSURE:
PROCESS AREA: FULL VACUUM TO 25 PSIG @ 400°F
THERMAL SECTION: 165 PSIG @ 400°F
- WEIGHTS:
UNIT EMPTY-----17,500 LBS.
UNIT FLOODED-----27,000 LBS.
ROTOR & TOP COVER ONLY---5,100 LBS.
DRIVE MOTOR-----605 LBS.
- FOR CORRECT NOZZLE ORIENTATION SEE TOP VIEW.
UNIT LIFTING LUG
1 31/32" DIA. HOLE



NOZ. QTY	SERVICE	DESCRIPTION	REMARKS
J 3	JACKET DRAIN	1/4" F.N.P.T	PLUGGED
H 1	MECH. SEAL COOLANT OUTLET	3/8" F.N.P.T	PLUGGED (TO BE REMOVED)
G 1	MECH. SEAL COOLANT INLET	3/8" F.N.P.T.	PLUGGED (TO BE REMOVED)
F 1	LUBRICANT INLET	3/8" F.N.P.T.	PLUGGED (TO BE REMOVED)
E 3	HEATING MED. OUTLET	1 1/2" 300# ANSI W.N., R.F. FLANGE	MATING FLANGE NOT FURNISHED
D 3	HEATING MED. INLET	3" 300# ANSI W.N., R.F. FLANGE	MATING FLANGE NOT FURNISHED
C 1	PRODUCT OUTLET	6" 150# ANSI W.N., R.F., SMALL T&G FLANGE	MATING FLANGE (SMALL TONGUE) NOT FURN.
B 2	PRODUCT INLET	3" 150# ANSI W.N., R.F., SMALL T&G FLANGE	MATING FLANGE (SMALL TONGUE) NOT FURN.
A 1	VAPOR OUTLET	28" ND 10 (142 PSI) T & G FLG.	MAT. FLG. FURN. PER DWG. # 2217BA

REV. A	BY: [Signature]	DATE: [Date]	APP. [Signature]	DATE: [Date]
REV. B	BY: [Signature]	DATE: [Date]	APP. [Signature]	DATE: [Date]
DIMENSIONS AS NOTED				
RELEASED FOR CONSTRUCTION				
SCALE	060.95.032.3			
<p>THIS DRAWING IS THE PROPERTY OF ICI CORPORATION, CHARLOTTE, NC, USA, AND IS LOANED FOR CONSTRUCTION PURPOSES ONLY. IT IS NOT TO BE REPRODUCED OR USED FOR ANY PURPOSE DETRIMENTAL TO THE INTERESTS OF ICI CORPORATION.</p>				
DWG. NO.	SD 16715-1C			
TITLE:	OUTLINE DRAWING FOR LN-1400			
REV. B				

102223

