

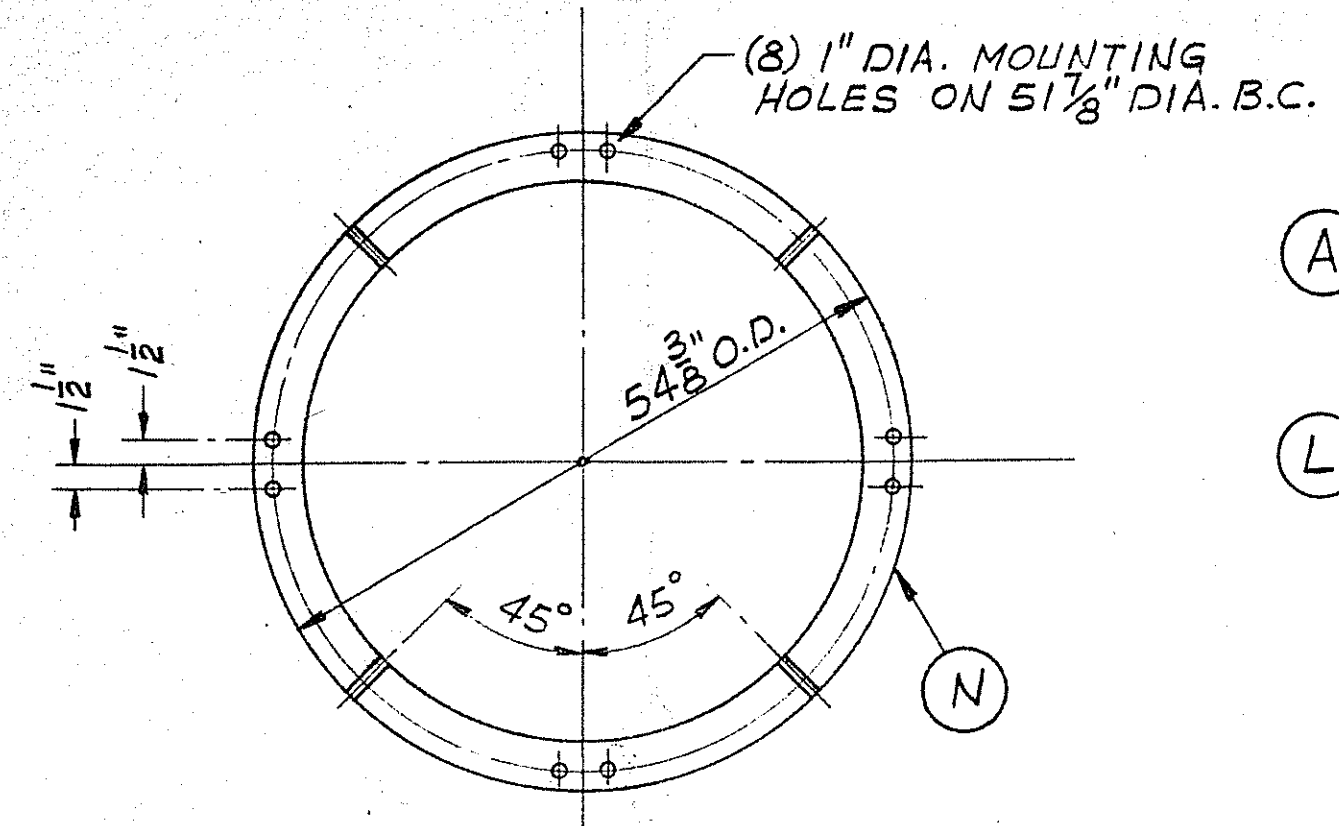
26'-0" REQ'D FOR SHAFT REMOVAL NOT INCLUDING LIFT MECHANISM

CLEARANCE REQ'D FOR REMOVAL OF SEAL CARTRIDGE

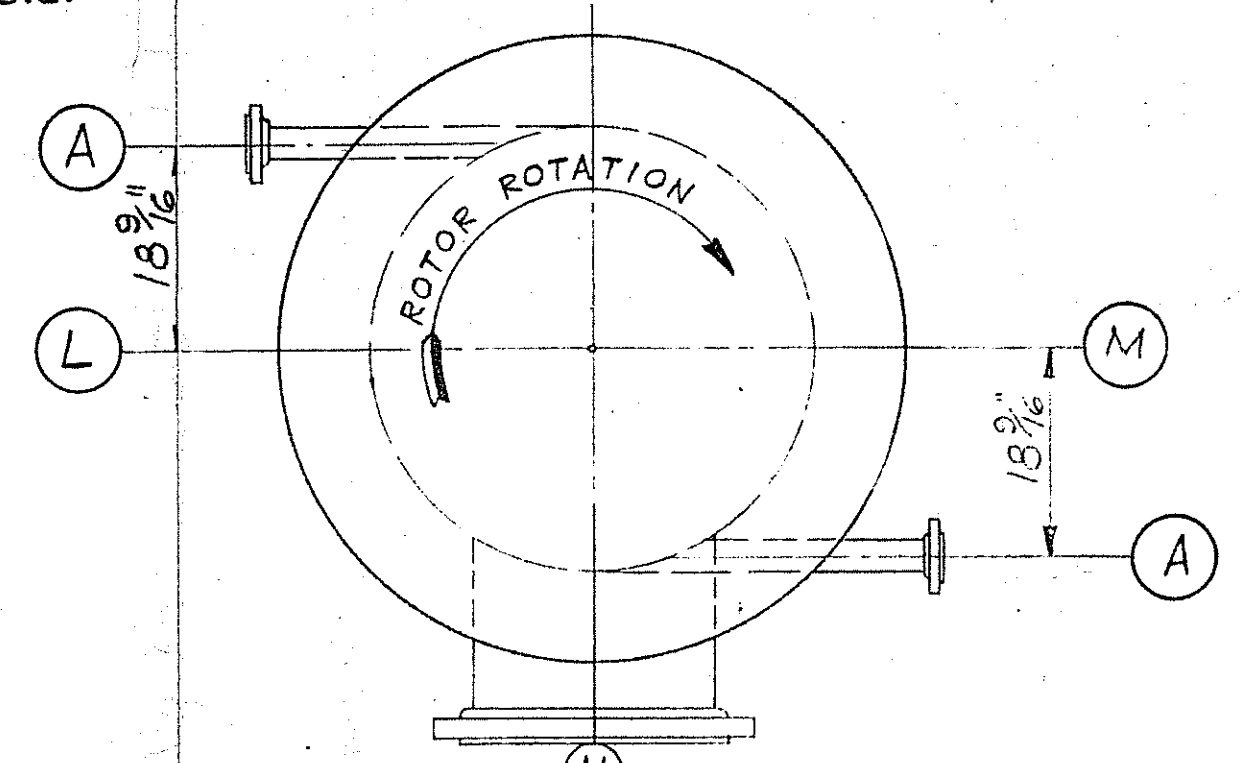
MOTOR TO BE FURNISHED BY CUSTOMER & MOUNTED BY MIXCO.

TYP ALL NOZZLES UNLESS NOTED OTHERWISE.

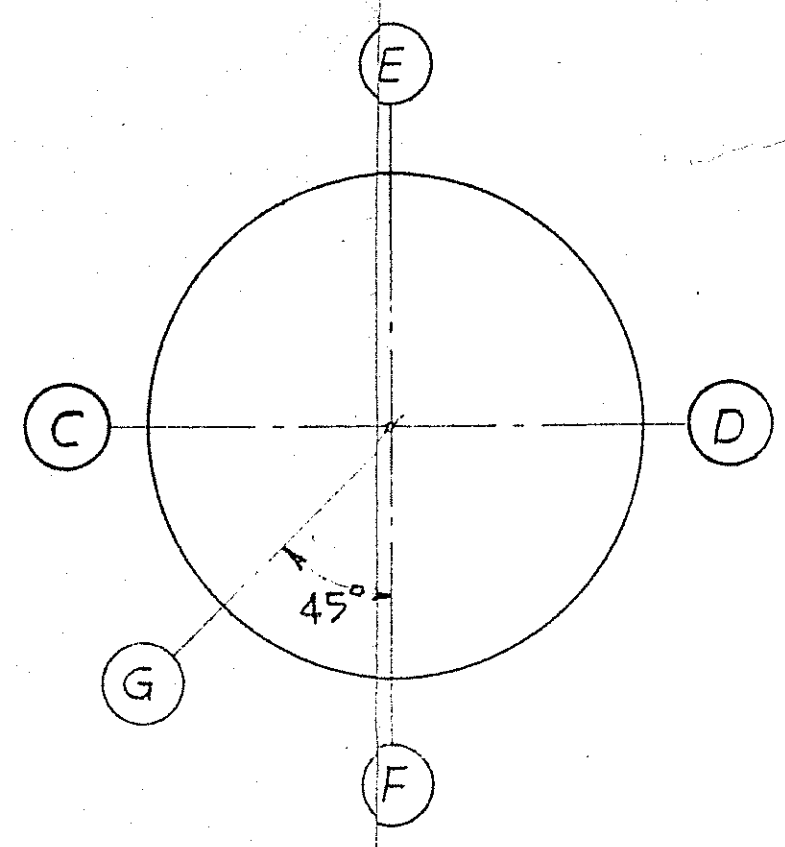
DRILL, CTSK & TAP 1/4"-20 (3-HOLES) FOR 3/4" LG. FLAT HD. SCREWS AT ASSEMBLY AFTER SHAFT BEARING HOUSING HAVE BEEN ALIGNED.



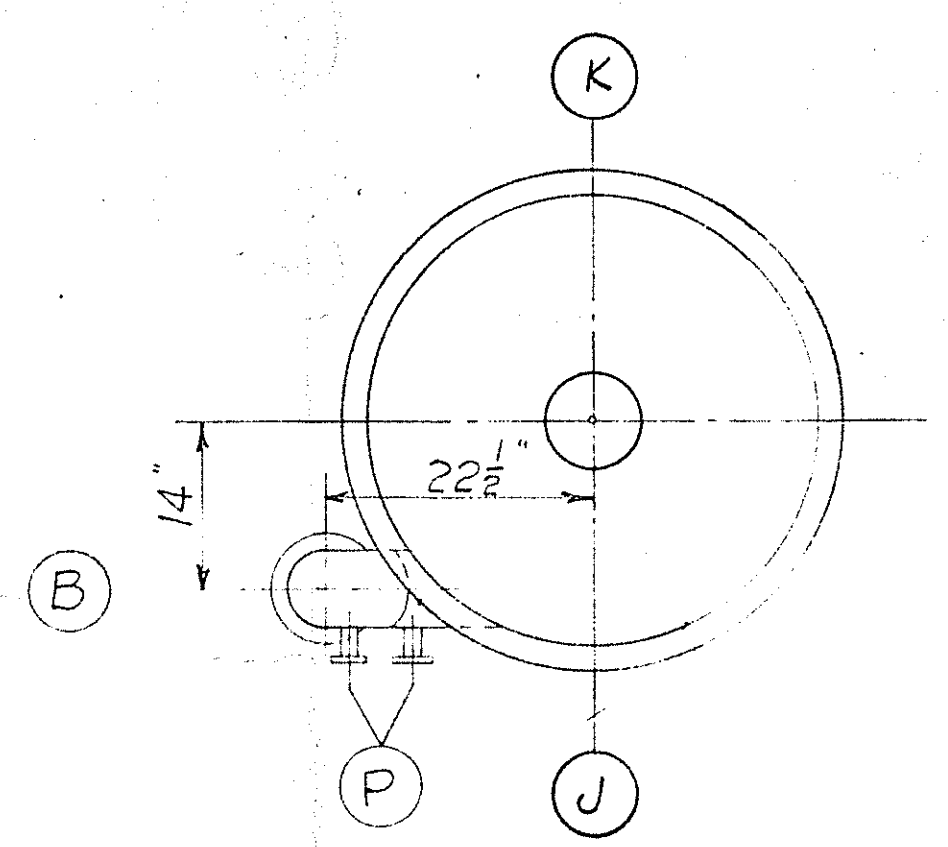
ORIENTATION PLAN MOUNTING HOLES



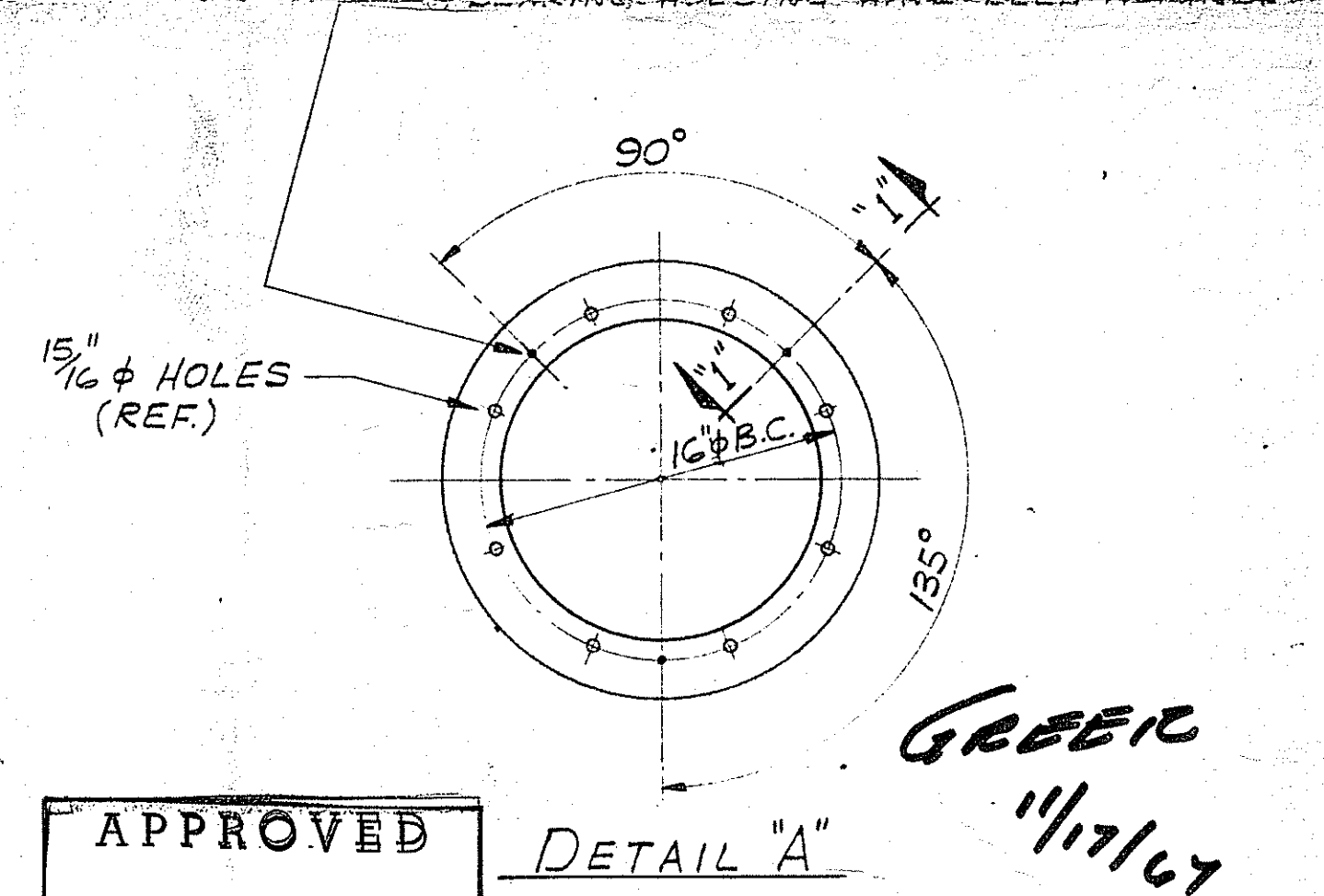
ORIENTATION PLAN VAPOR SECTION NOZZLES & UPPER BRG. LUBE PORTS



ORIENTATION PLAN THERMAL SECTION NOZZLES



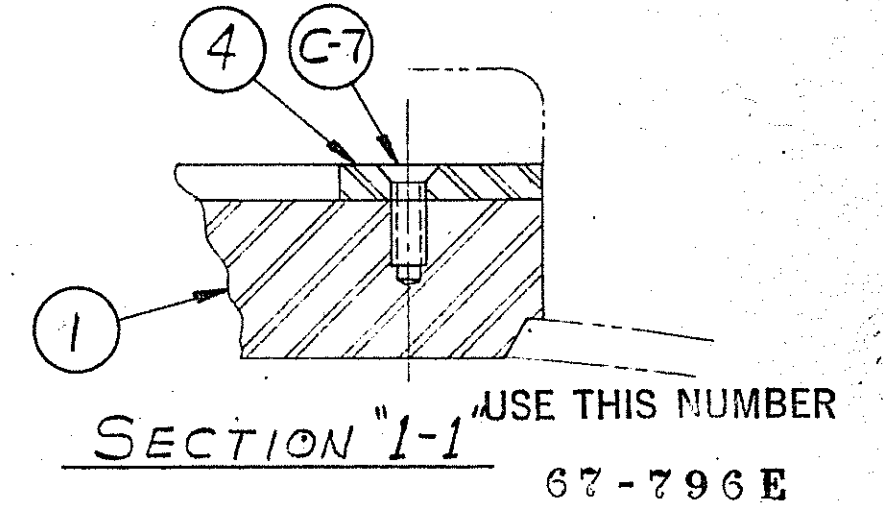
ORIENTATION PLAN BOTTOM OUTLET & BOTTOM BRG. LUBE PORTS



GREEN 11/17/67

APPROVED  
BY: [Signature] 11/17/67  
HOYER-SCHLESINGER-TURNER  
Consulting Engineers

ITEM(S) D-1  
P. O. 2334-10



SECTION 1-1 USE THIS NUMBER 67-796 E

- NOTES:
- HEADS VAPOR SECTION TO BE STAMPED WITH VESSEL SERIAL No.
  - JACKET VOLUME 27.65 Ft.<sup>3</sup>
  - WEIGHT EMPTY 16,800 LBS. (APPROX.)
  - WEIGHT FLOODED 30,000 LBS. (APPROX.)
  - DRIVE WEIGHT 2,090 LBS. (APPROX.)
  - ROTOR WEIGHT 3,650 LBS. (APPROX.)
  - NATIONAL BOARD INSPECTION REQ'D.

REF. NO. REQD	SERVICE	TYPE	SIZE & DESCRIPTION	REMARKS	MATERIAL
Q	2	THERMOWELL CONN.	TAP'D 3/4" N.P.T.	TAPPED IN HOUSING	A-285C & 316SS
P	2	THERMOWELL CONN.	FLG'D 1"-150# A.S.A.	R.F., S.O. INSERT TYPE	A-285C & 316SS
N	1	SUPPORT RING		WELDED TO VAPOR SECT	SA-285C
M	1	SEAL FLUID OUTLET (TOP)	TAP'D 3/8" N.P.T.	TAPPED IN HOUSING	
L	1	SEAL FLUID INLET (TOP)	TAP'D 3/8" N.P.T.	TAPPED IN HOUSING	
K	1	SEAL FLUID OUTLET (BOTT.)	TAP'D 1/4" N.P.T.	TAPPED IN HOUSING	
J	1	SEAL FLUID INLET (BOTT.)	TAP'D 1/4" N.P.T.	TAPPED IN HOUSING	
H	1	VAPOR OUTLET	FLG'D 20"-150# A.S.A.	R.F., S.O.	SA-181, GR.1 316L INLAY
G	3	GAGE CONN.	FLG'D 1"-150# A.S.A.	R.F., S.O.	SA-181, GR.1
F	3	INSTRUMENT CONN.	FLG'D 1"-150# A.S.A.	R.F., S.O.	SA-181, GR.1
E	3	RELIEF VALVE CONN.	FLG'D 2"-150# A.S.A.	R.F., S.O.	SA-181, GR.1
D	3	CONDENSATE OUTLET	FLG'D 2"-150# A.S.A.	R.F., S.O.	SA-181, GR.1
C	3	HEATING MEDIA INLET	FLG'D 2"-150# A.S.A.	R.F., S.O.	SA-181, GR.1
B	1	PRODUCT OUTLET	FLG'D 6"-150# A.S.A.	R.F., S.O. INSERT TYPE	A-285C & 316SS
A	2	PRODUCT INLET	FLG'D 2"-150# A.S.A.	R.F., S.O. INSERT TYPE	A-285C & 316SS

DESIGN DATA	INS.P. A.S.M.E. & NAT'L BOARD CODE - 1965 U.P.V. SECTION VIII A.S.M.E. BOILER & P.V. CODE
SIDE	MAX. W.P. @ TEMP HYDRO TEST
JACKET	100 P.S.I. @ 400 °F. FULL VACUUM INTERNAL 175 P.S.I.

REVISIONS

7-7-GT AFW  
1-6-1-67 AFW

This print is the property of the Votator Division and shall not be reproduced, copied, lent, or disposed of directly or indirectly nor used for any purpose other than that for which it is specifically furnished except by written permission of the Votator Division.

VOTATOR DIVISION  
CHEMETRON CORPORATION  
LOUISVILLE, KENTUCKY

Scale NONE  
Date 4-18-67  
Drawn By G. Key  
Parts List  R. P. List  Packing List

TURBA-FILM PROCESSOR  
36-216  
GENERAL ASSEMBLY

401117-A01

RECEIVED NOV 14 1967