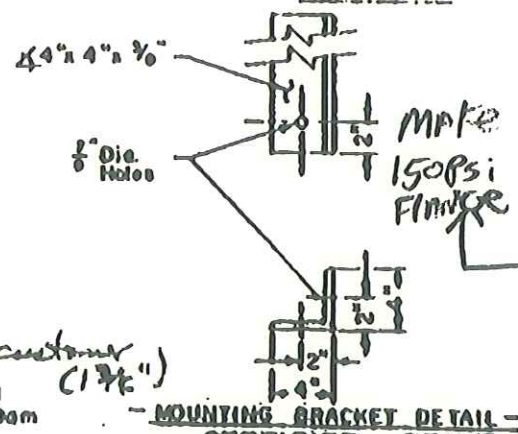
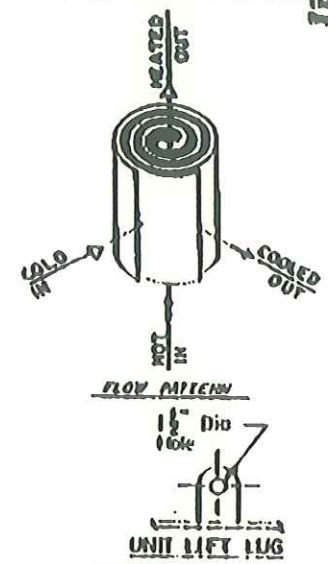
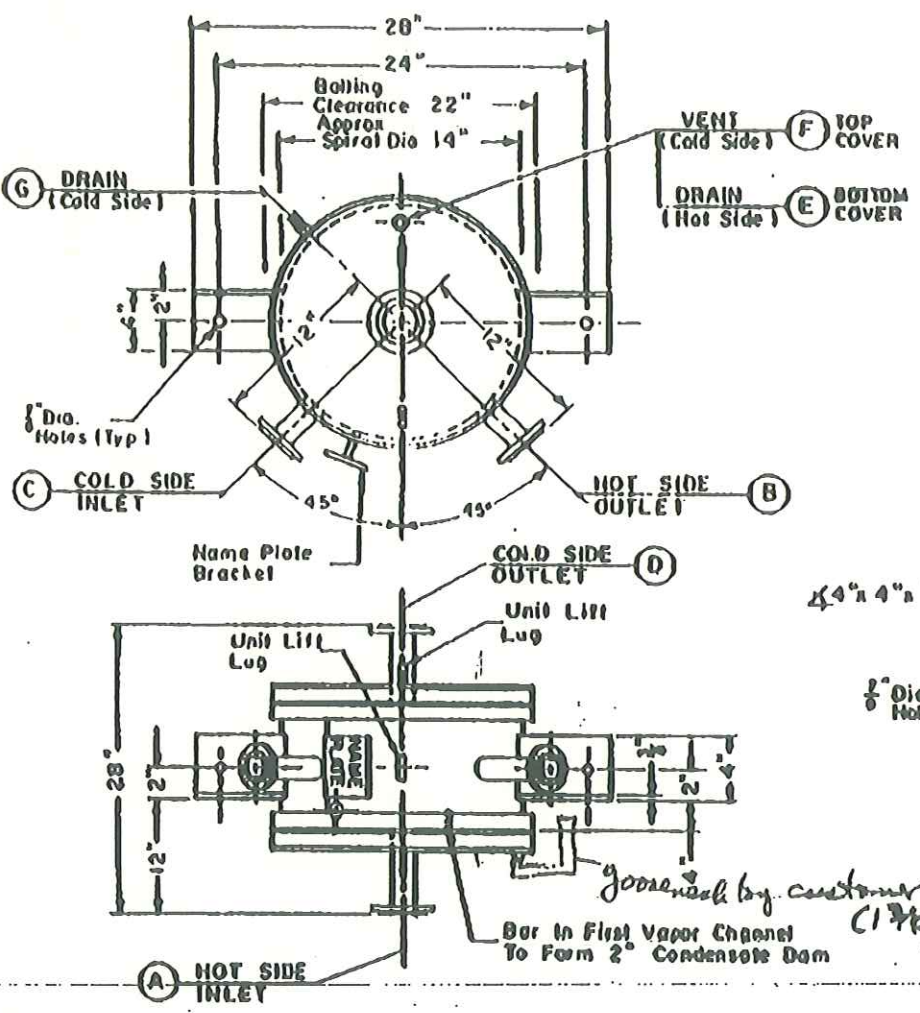


25 94 23:05 ALBERTS & ASSOC. - TIES

This Document And Its Contents Are The Property Of All-Clad Thermal Inc. And Shall Not Be Copied, Reproduced, Transmitted, Or Released To Any Third Party Without The Consent Of All-Clad Inc.



Weight, Flooded - Approx.	549
Weight, Empty - Approx.	600
Hydrostatic Test Press. (Both Sides)	319 PSI
Maximum Allowable Working Press. (Both Sides)	331
Design Temp. (Both Sides)	20°E Min. °F Max.
Inner Channel (Hot Side)	ALTERNATE CHANNELS WELDED
Outer Channel (Cold Side)	
Outer Spiral Thickness	136" x 12" Wide
Spiral Material	SA-240-304 SS

ALL HEADS SA-516-70 FACED WITH SA-240-304 SS
 GASKETS: NON ASBESTOS (18" NOMINAL DI)
 HOOD/LIFT ASS'Y 12 PER COVER, 1/4" D. x 0" L.G. SA-995, 07 (ZINC PLATED.)
 PAINT: MFG. STD ; CERAMIC WHITE, PORCELAIN GLOSS
 TOLERANCE ON ALL DIMENSIONS 1/16"
 TOLERANCE ON ANGULAR DIMENSIONS 1/2°
 HOLES TO STRADDLE SHOWN CENTERLINES, ± 1°
 LOCATION OF NAMEPLATE MFG OPTION.
 FOR WELDING DETAILS SEE DWG. NO. D-101 A & B

NOZZLES A/B	ARE SA-312-304L, SCHED. 40
NOZZLES C/D	ARE SA-312-304L, SCHED. 40
DRAINS E/G	ARE SA-312-304L, SCHED. 40
VENT F	IS SA-312-304L, SCHED. 40
FLANGES ARE	SA-105

NO.	REQ'D	SIZE	RATING	FACE	REMARKS
G	1	1"		NRT.	CAPPED
F	1	1"		NRT.	CAPPED
E	1	1"		NRT.	CAPPED
D	1	2"	150 #	L.J.	
C	1	2"	150 #	L.J.	
B	1	2"	150 #	L.J.	
A	1	2"	150 #	L.J.	

MOUNTING BRACKET DETAIL - CERTIFIED PRINT
 Approved For Fabrication Or Erection
 Date

DESIGNED, CONSTRUCTED, UN STAMPED IN ACCORDANCE WITH ASME CODE SECT. VIII - DIV. 1 - 1989, ADDENDA 1991

DESIGN: ALCO-LAVAL THERMAL INC.
 60 BOX LYKENS, PA. 17048-0011
 CUSTOMER:
 ORDER No. _____ ITEM No. _____
 20 SQ FT SPIRAL HEAT EXCHANGER
 DWN DATE: _____ C/D: _____ A/W: _____ JOB No. _____
 MFG No. _____ TYPE: I-V/T-C

420 -01-40305
 420 -01-40295

WARNING
 This is a copy of the original drawing of the equipment and is not to be used for fabrication or erection without the approval of the design engineer. It is the responsibility of the user to ensure that the equipment is fabricated and erected in accordance with the design and specifications.

106609