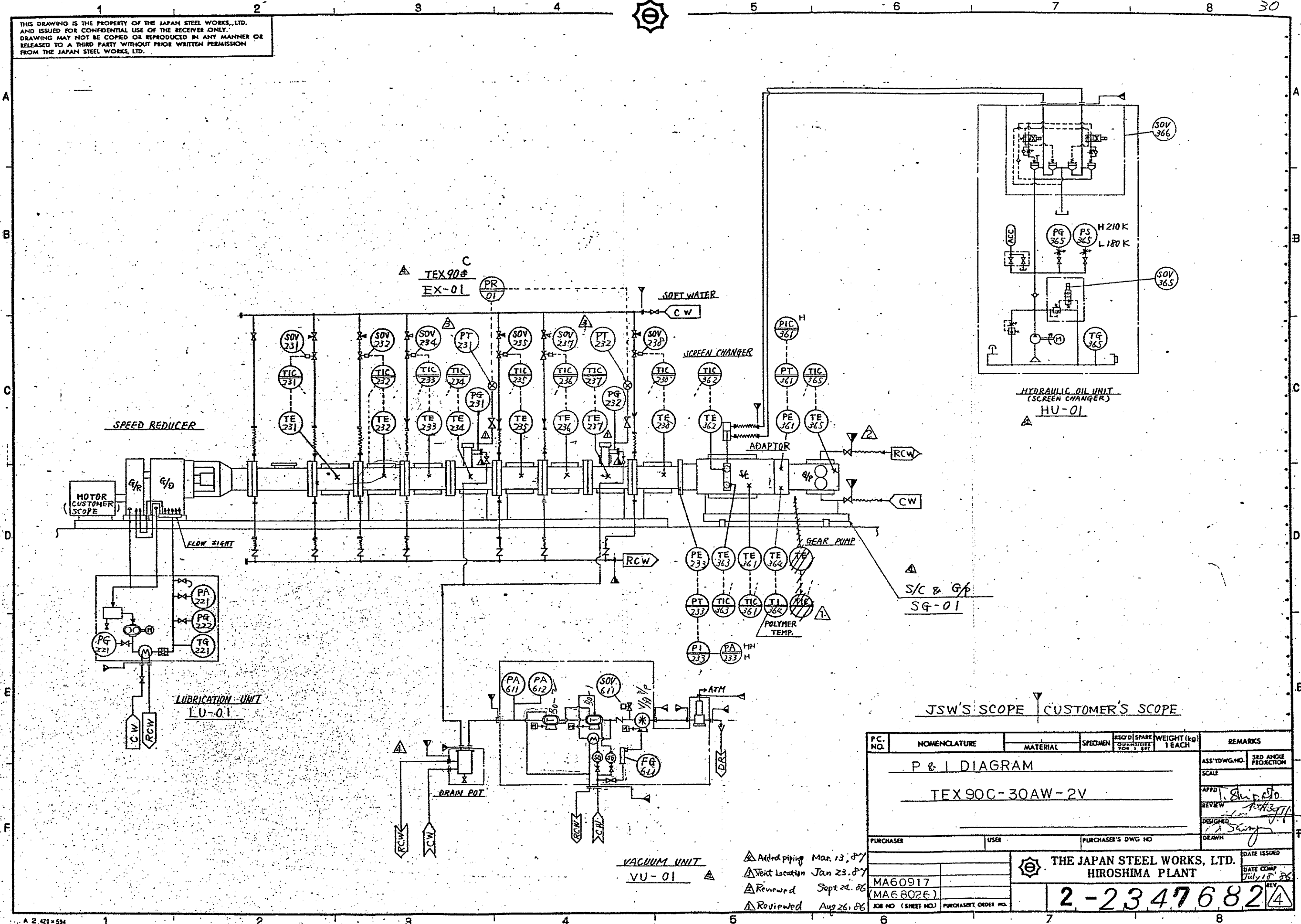


THIS DRAWING IS THE PROPERTY OF THE JAPAN STEEL WORKS, LTD. AND ISSUED FOR CONFIDENTIAL USE OF THE RECEIVER ONLY. DRAWING MAY NOT BE COPIED OR REPRODUCED IN ANY MANNER OR RELEASED TO A THIRD PARTY WITHOUT PRIOR WRITTEN PERMISSION FROM THE JAPAN STEEL WORKS, LTD.

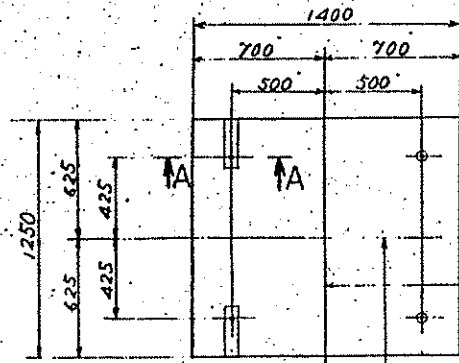
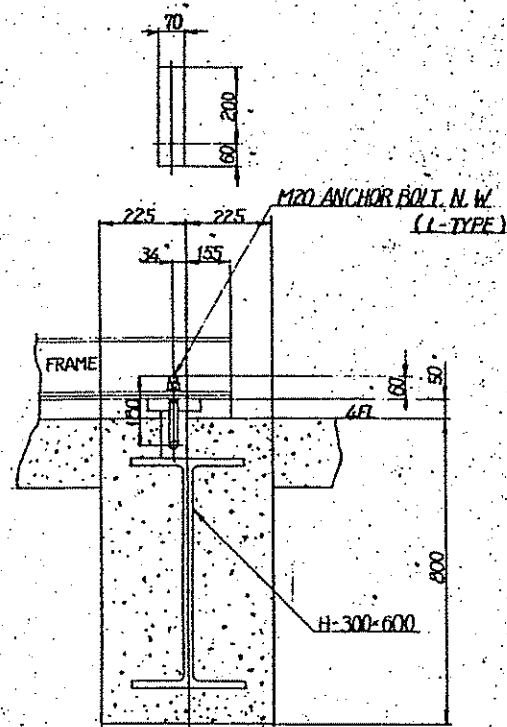
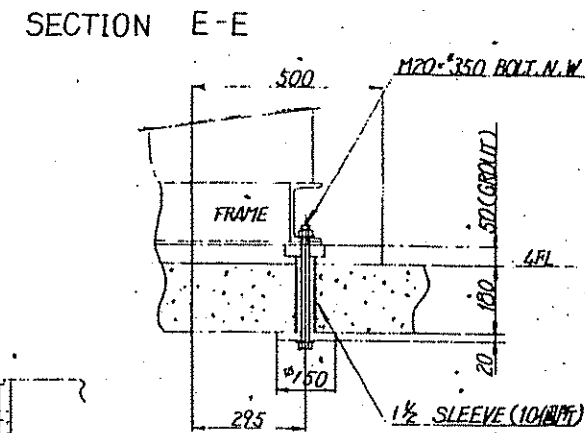
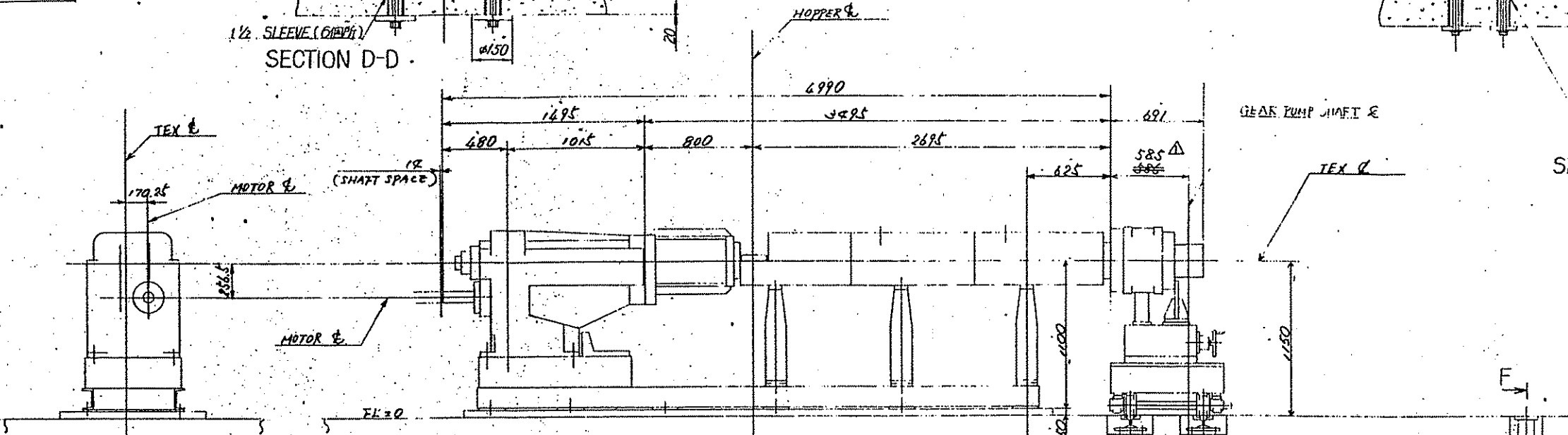
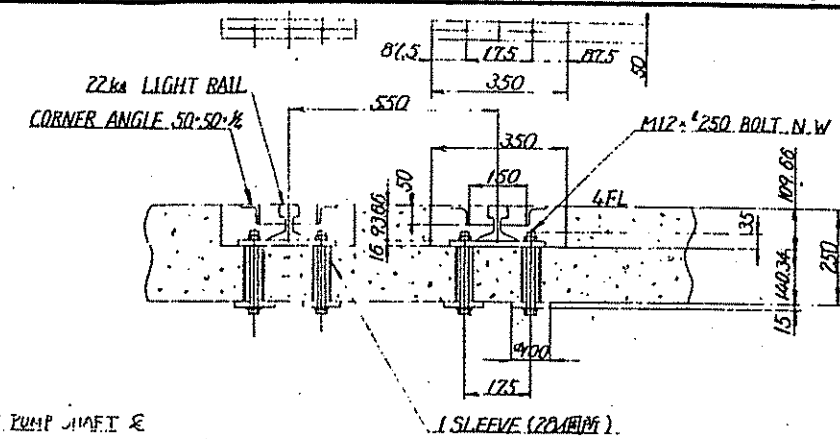
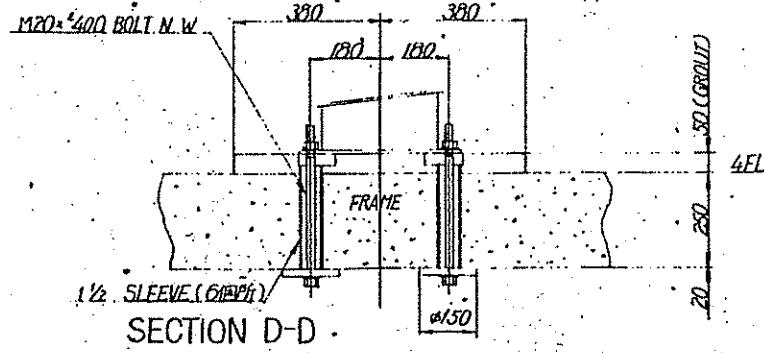


PC. NO.	NOMENCLATURE	MATERIAL	SPECIMEN	REQ'D SPARE QUANTITIES FOR 1 SET	WEIGHT (kg) 1 EACH	REMARKS
	P & I DIAGRAM					ASS'Y DWG. NO. 3RD ANGLE PROJECTION
	TEX 90C-30AW-2V					SCALE
						APPD. <i>[Signature]</i>
						REVIEW <i>[Signature]</i>
						DESIGNED <i>[Signature]</i>
						DRAWN <i>[Signature]</i>
PURCHASER	USER	PURCHASER'S DWG NO.		DATE ISSUED		DATE COMP. <i>July 18 '86</i>
				THE JAPAN STEEL WORKS, LTD. HIROSHIMA PLANT		REV. <i>4</i>
MA60917				2-2347682		
MA68026						
JOB NO. (SHEET NO.)	PURCHASER'S ORDER NO.					

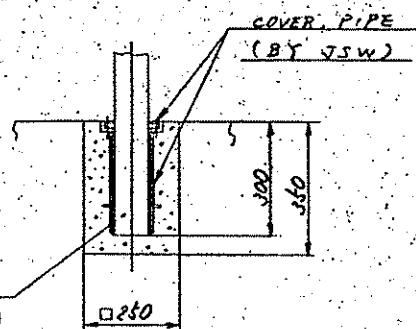
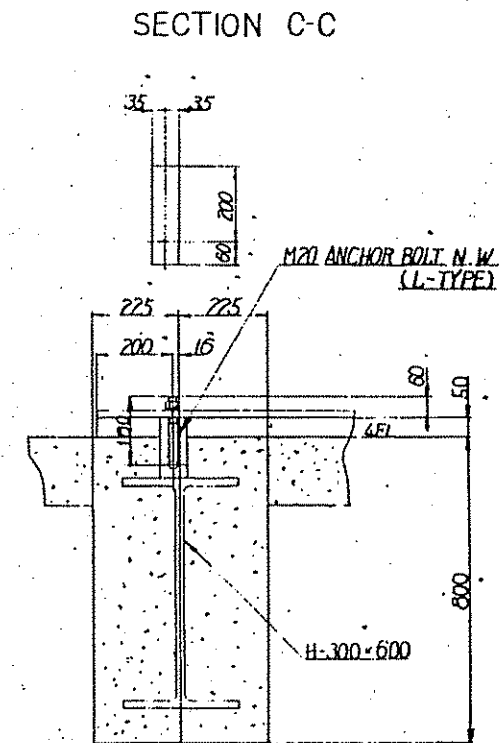
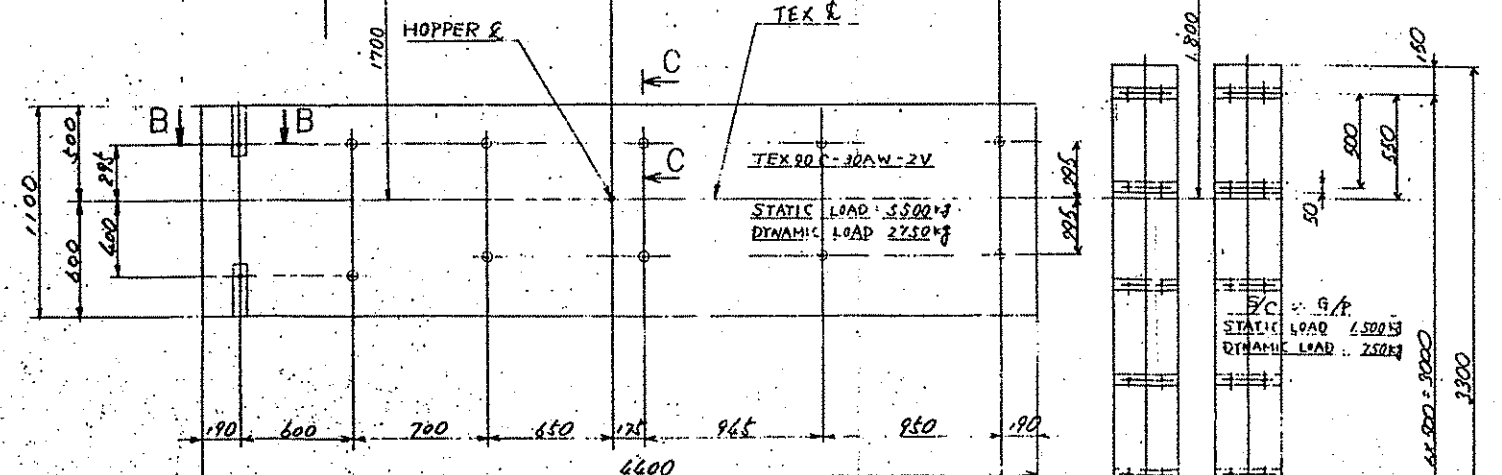
▲ Added piping Mar. 13, 87
 ▲ Next Location Jan 23, 87
 ▲ Renewed Sept. 24, 86
 ▲ Reviewed Aug 26, 86

THIS DRAWING IS THE PROPERTY OF THE JAPAN STEEL WORKS, LTD. AND ISSUED FOR CONFIDENTIAL USE OF THE RECEIVER ONLY. DRAWING MAY NOT BE COPIED OR REPRODUCED IN ANY MANNER OR RELEASED TO A THIRD PARTY WITHOUT PRIOR WRITTEN PERMISSION FROM THE JAPAN STEEL WORKS, LTD.

VACUUM UNIT
FOUNDATION
REFER TO DWG. NO.
62963-20201



GYK-14070K
STATIC LOAD: 400kg
DYNAMIC LOAD: 200kg



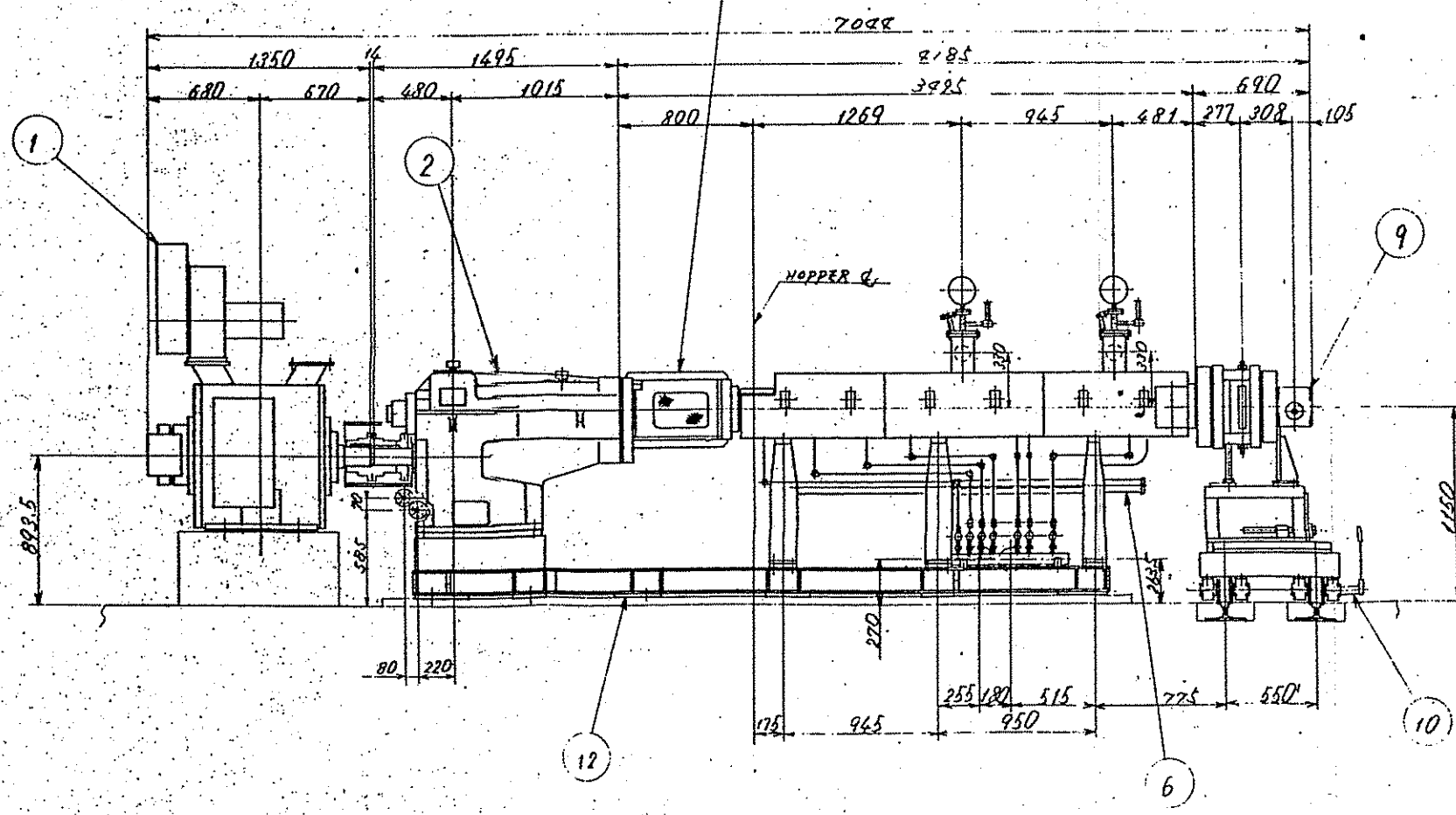
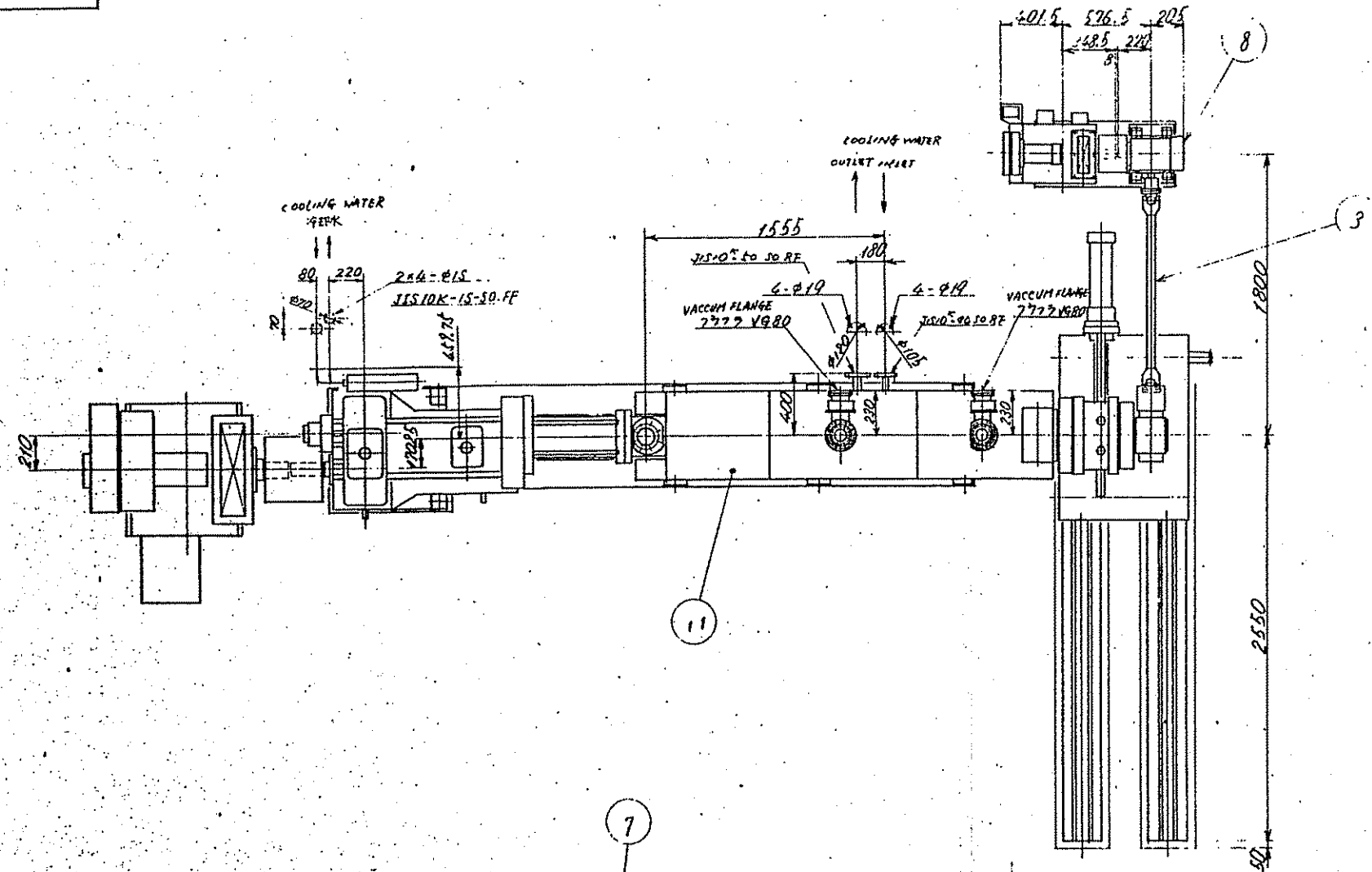
OPERATION SIDE

△ Feb 15 '57 1000200111
△ Feb 10, '57 Rev. 101

PC NO	NOMENCLATURE	MATERIAL	SPECIMEN	DESIGN	WEIGHT	TEACH	REMARKS
ASSTG NO	3RD AMOUNT						
SCALE		1:30					
APP'D		[Signature]					
REVIEW		[Signature]					
CHECKED		[Signature]					
DRAWN		[Signature]					
DATE ISSUED							
DATE COMP							
DATE 7/57							
PURCHASER'S DWG. NO.		1-8001991					
DRAWN		WADA					
CHECKED		[Signature]					
DESIGN		[Signature]					
TEACH		[Signature]					
WEIGHT							
DESIGN							

THE JAPAN STEEL WORKS, LTD.
HIROSHIMA PLANT

THIS DRAWING IS THE PROPERTY OF THE JAPAN STEEL WORKS, LTD. AND ISSUED FOR CONFIDENTIAL USE OF THE RECEIVER ONLY. DRAWING MAY NOT BE COPIED OR REPRODUCED IN ANY MANNER OR RELEASED TO A THIRD PARTY WITHOUT PRIOR WRITTEN PERMISSION FROM THE JAPAN STEEL WORKS, LTD.



ITEM NO.	QUANTITY	UNIT	DESCRIPTION	REMARKS
12	1	SET	ASSY OF COVER	1080.0 2-1521161
11	1	SET	SUB ASSY OF CARRIAGE	50.0 1-8009807
10	1	SET	SUB ASSY OF BEAR PUMP	700.0 1-8004198
9	1	SET	DRIVE UNIT ASSY	690.0 1-8002839
8	1	SET	SUB ASSY OF SCREEN	570.0 1-1521125
7	1	SET	PIPING ASSY	1500.0 0-8004651
6	1	SET	MAIN MOTOR	700.0 0-8004066
3	1	SET	JOINT SHAFT	P.1521125
2	1	SET	REDUCTION GEAR	1-1521197
1	1	SET	MAIN MOTOR	1-1521196

SCALE	DATE ISSUED	DATE CORRECTED
1:20	1977.12.27	1978.5.27

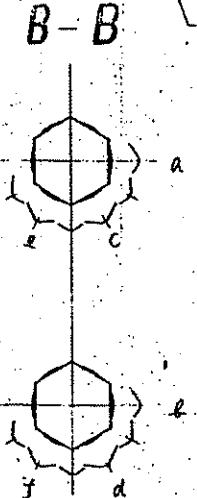
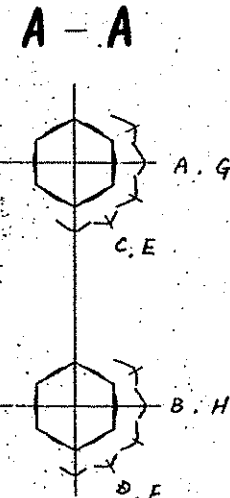
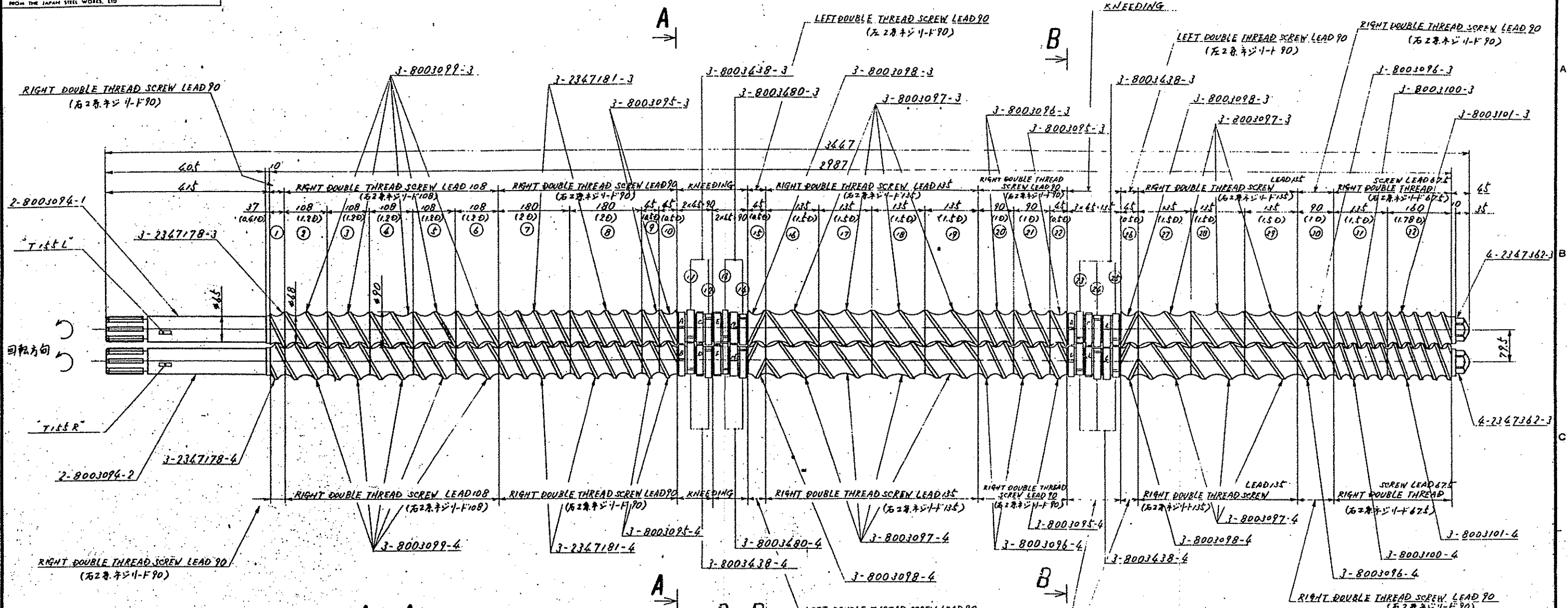
GENERAL ASSEMBLY (7-91727)

TEX90

THE JAPAN STEEL WORKS, LTD. HIROSHIMA PLANT

1-8004806

THIS DRAWING IS THE PROPERTY OF THE JAPAN STEEL WORKS, LTD. AND ISSUED FOR CONFIDENTIAL USE OF THE RECEIVER ONLY. DRAWING MAY NOT BE COPIED OR REPRODUCED IN ANY MANNER OR RELEASED TO A THIRD PARTY WITHOUT PRIOR WRITTEN PERMISSION FROM THE JAPAN STEEL WORKS, LTD.



PC NO	QTY	NOMENCLATURE	MATERIAL	SPECIFICATION	WEIGHTING	REMARKS
4-2347362	3	CAP	SAE6150	SET 1	6.2	
3-8003101	3	SCREW	SAE6150	SET 1	6.6	2E7
3-8003100	3	SCREW	-	SET 1	5.6	2F6
3-8003096	3	SCREW	-	SET 3	3.6	2F2
3-8003097	3	SCREW	-	SET 7	5.6	2F3
3-8003098	3	SCREW	-	SET 2	1.8	2FR
3-8003680	3	KNEEDING	-	SET 2	2.2	3KSR
3-8003638	3	KNEEDING	-	SET 5	2.2	3KS
3-8003095	3	SCREW	-	SET 3	1.8	2F1
3-2347181	3	SCREW	-	SET 2	7.2	2F4
3-8003099	3	SCREW	-	SET 5	4.4	2F5
3-2347178	3	SCREW	SAE6150	SET 1	1.8	2FS
2-8003096	1	SCREW SHAF	SAE6150	SET 1	104.0	

POSITION	1	2~6	7~8	9~10	11~12	13~14	15	16~19	20~21	22	23~25	26	27~29	30	31	32				
MARK NO. LEFT	2FS	2FS	2F6	2F1	3KS	3KSR	2FK	2F3	2F2	2F1	3KS	2FR	2F3	2F2	2F6	2F7				
MARK NO. RIGHT	2FS	2FS	2F6	2F1	3KS	3KSR	2FR	2F3	2F2	2F1	3KS	2FR	2F3	2F2	2F6	2F7				
REMARKS	FULL FLIGHT				KNEEDING				FULL FLIGHT				KNEEDING				FULL FLIGHT			

ASSY OF SCREW
2712 2397 (同方向用)

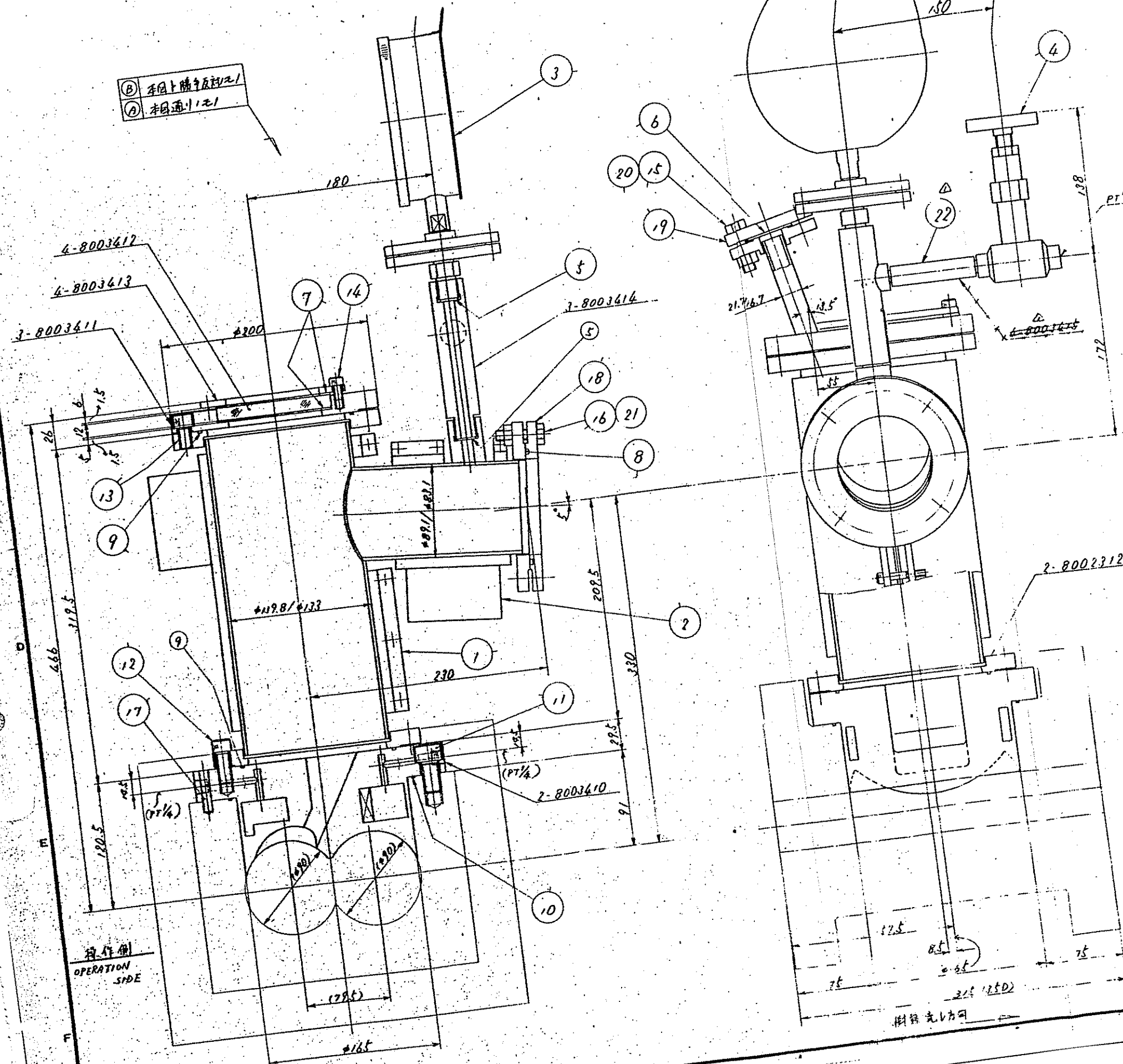
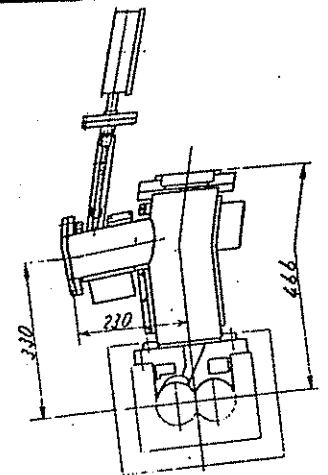
TEX90

THE JAPAN STEEL WORKS, LTD.
HIROSHIMA PLANT

1-8003893

THIS IS THE PROPERTY OF THE JAPAN STEEL WORKS LTD.
 IT IS NOT TO BE REPRODUCED OR TRANSMITTED IN ANY FORM OR BY ANY MEANS, ELECTRONIC OR MECHANICAL, WITHOUT PERMISSION IN WRITING FROM THE JAPAN STEEL WORKS LTD.

NOTE. 注.
 (B) (A) 上 勝手反付にて!



NO.	QTY	DESCRIPTION	MATERIAL	UNIT	REMARKS
22	1	PIPE	SUS 304	1	PT 1/4
21	4	HEXAGON NUT M10	(JIS B 1137)	4	
20	1	FLANGE	SUS 304	1	RF-100653
19	1	VACUUM FLANGE	SUS 304	1	
18	1	PARALLEL PIN	SUS 304	1	
17	4	BOLT	S45C (JIS B 1137)	4	
16	4	BOLT	S45C (JIS B 1137)	4	
15	4	HEXAGON SOCKET HEAD BOLT	SUS 304	4	
14	8	HEXAGON SOCKET HEAD BOLT	SUS 304	8	
13	8	HEXAGON SOCKET HEAD BOLT	SUS 304	8	
12	6	HEXAGON SOCKET HEAD BOLT	SUS 304	6	
11	1	O RING	V3640	1	
10	2	O RING	V3640	2	
9	1	O RING	V3640	1	
8	2	GASKET	TEFLON 720	2	
7	1	GASKET	TEFLON 720	1	
6	2	GASKET	AIOSOP	2	
5	1	VALVE	(SUS)	1	
4	1	PRESSURE GAUGE		1	
3	1	BAND HEATER		1	
2	1	BAND HEATER		1	
1	1	VENT BOX ASSY		1	(35.0)
B	1	VENT BOX ASSY		1	(35.0)
A	1	VENT BOX ASSY		1	(35.0)

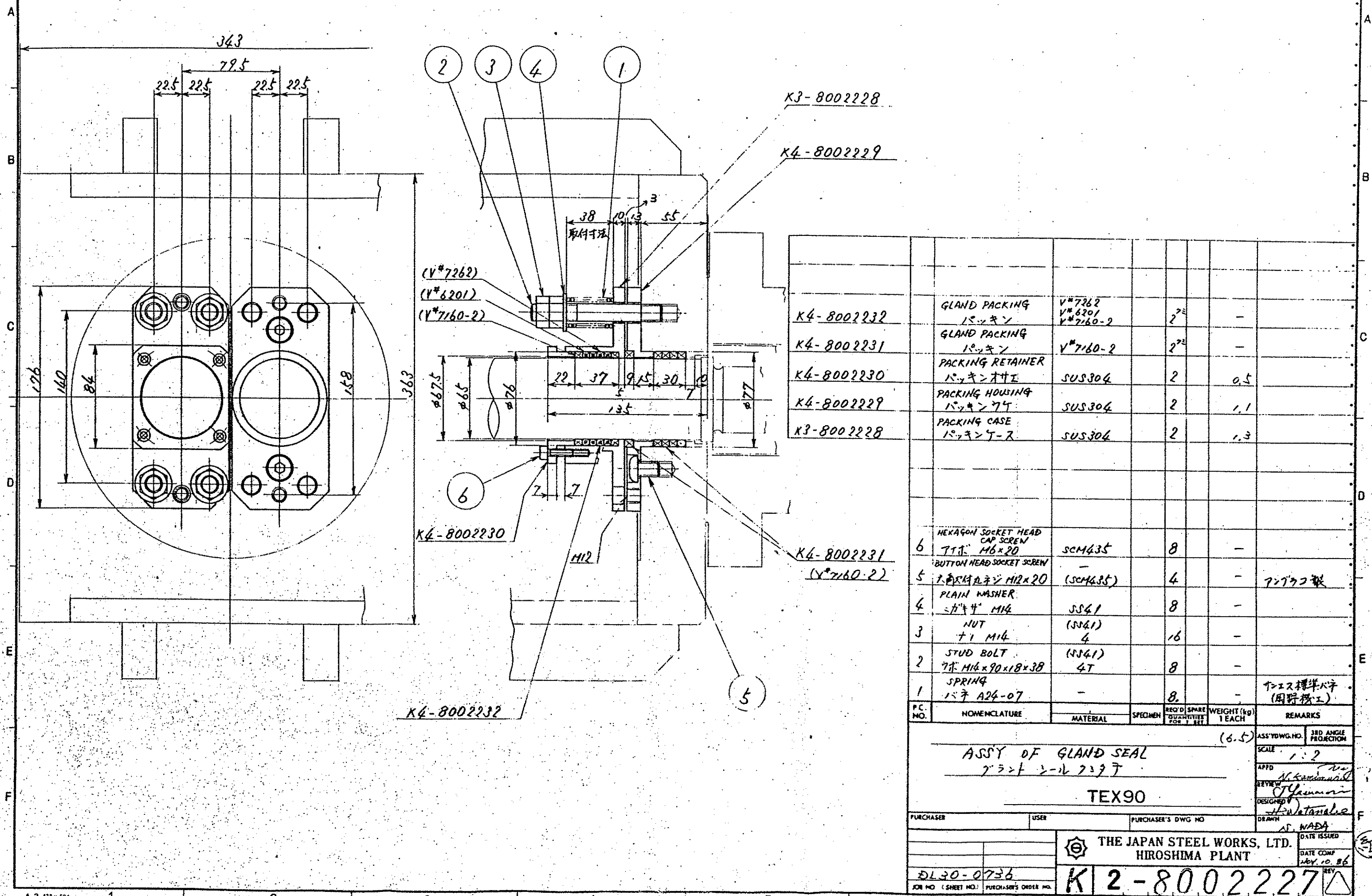
VENT BOX ASSY
 230 230

TEX90

THE JAPAN STEEL WORKS LTD.
 HIROSHIMA PLANT

1-800347

THIS DRAWING IS THE PROPERTY OF THE JAPAN STEEL WORKS, LTD. AND ISSUED FOR CONFIDENTIAL USE OF THE RECEIVER ONLY. DRAWING MAY NOT BE COPIED OR REPRODUCED IN ANY MANNER OR RELEASED TO A THIRD PARTY WITHOUT PRIOR WRITTEN PERMISSION FROM THE JAPAN STEEL WORKS, LTD.



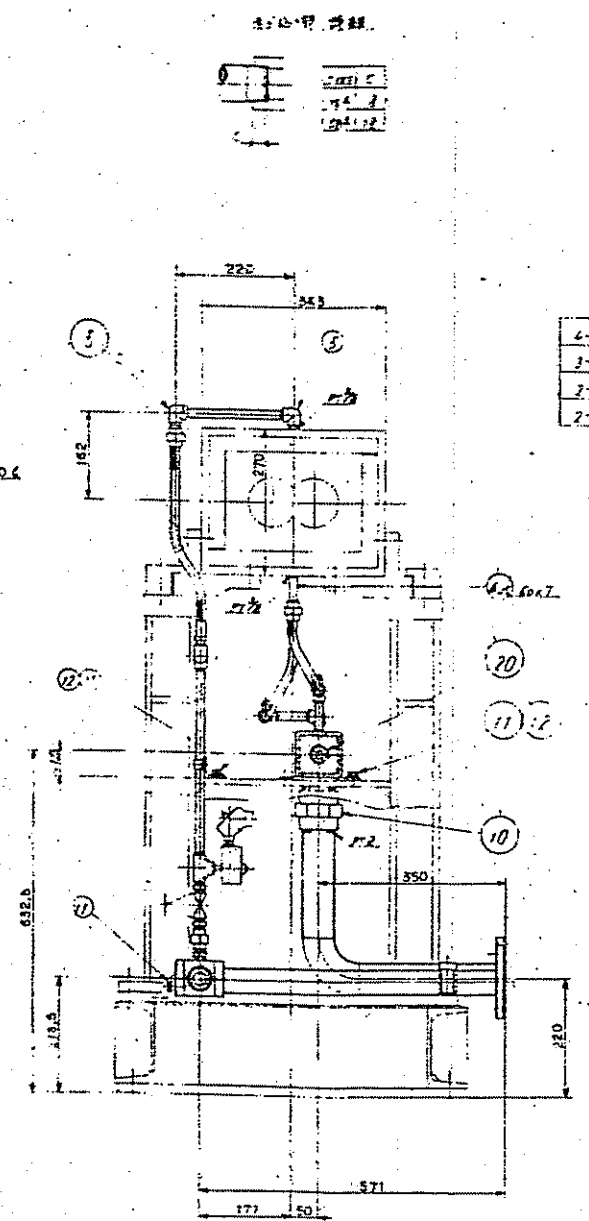
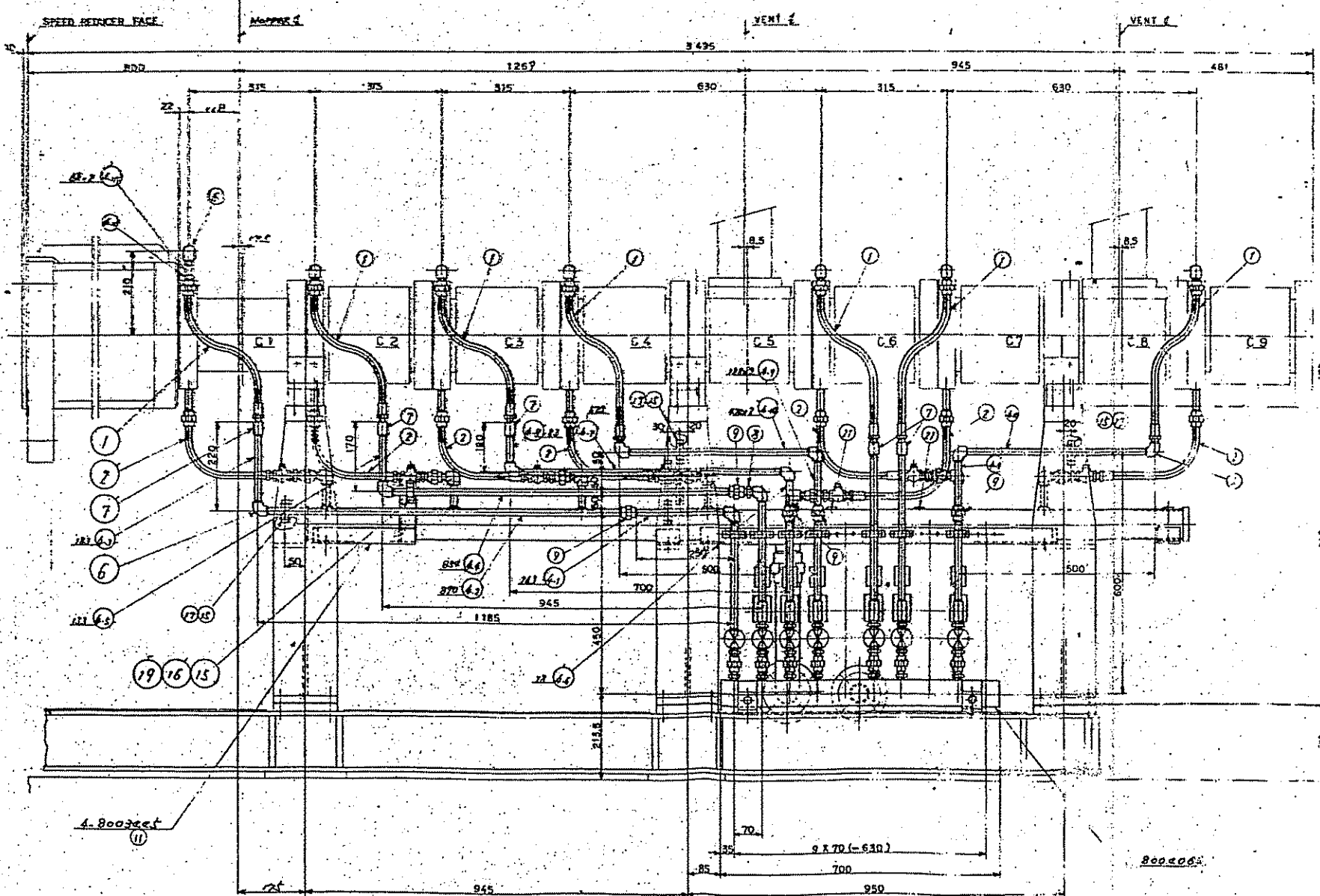
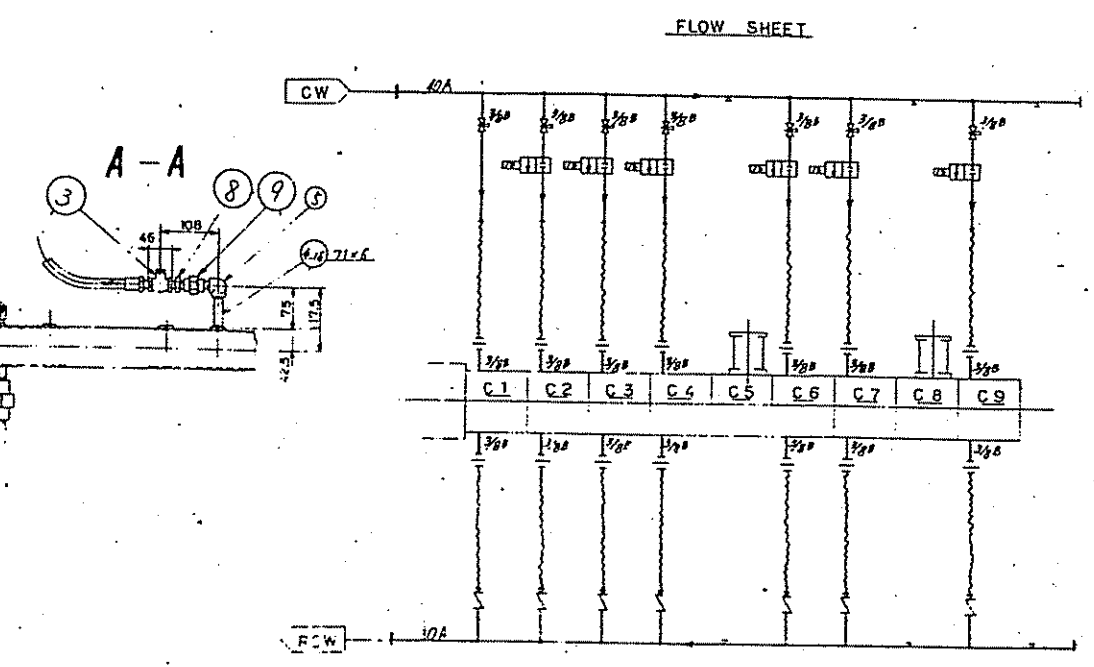
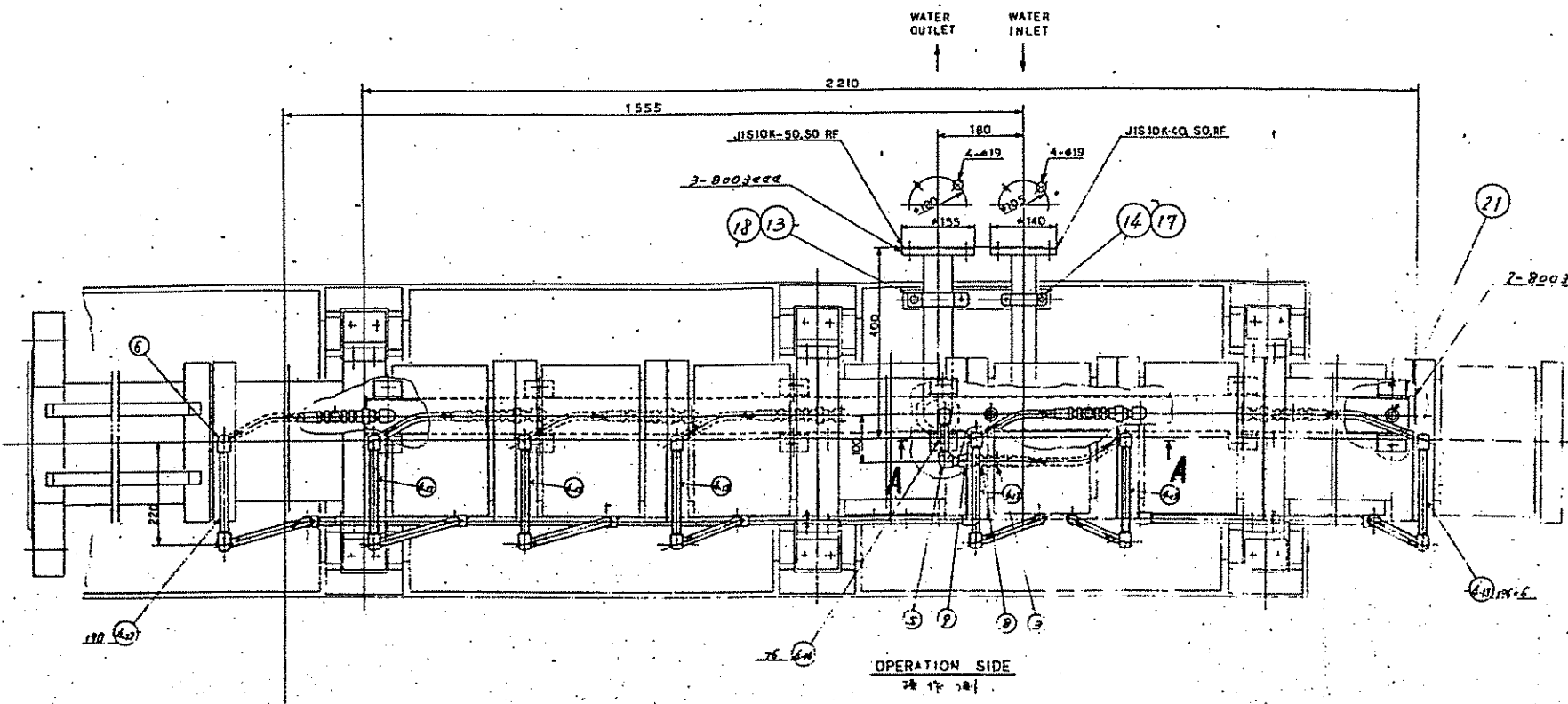
K3-8002228

K4-8002229

K4-8002232	GLAND PACKING パッキン	V*7262 V*6201 V*7160-2	2	-	
K4-8002231	GLAND PACKING パッキン	V*7160-2	2	-	
K4-8002230	PACKING RETAINER パッキンオケ	SUS304	2	0.5	
K4-8002229	PACKING HOUSING パッキンハウジング	SUS304	2	1.1	
K3-8002228	PACKING CASE パッキンケース	SUS304	2	1.3	

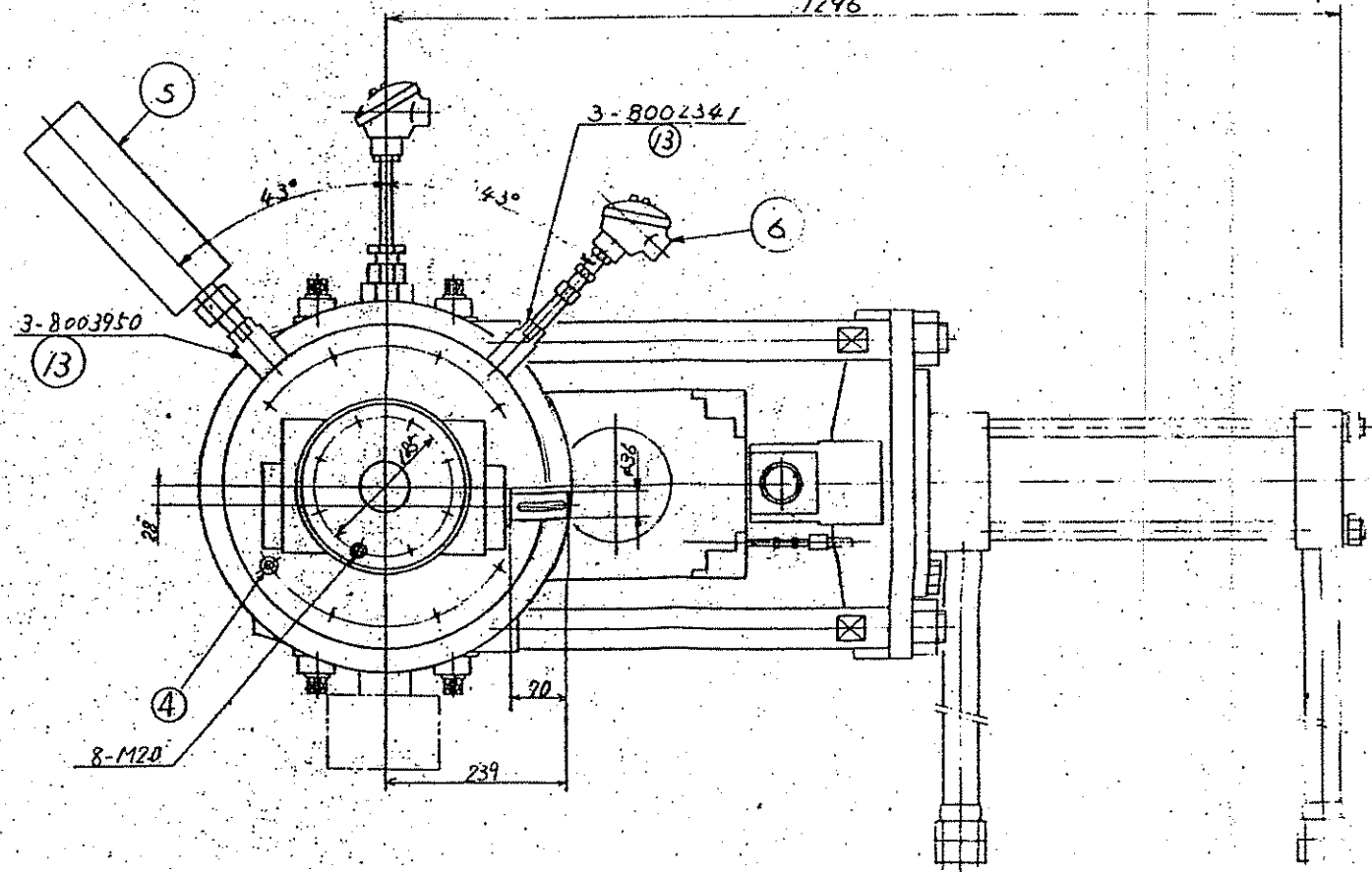
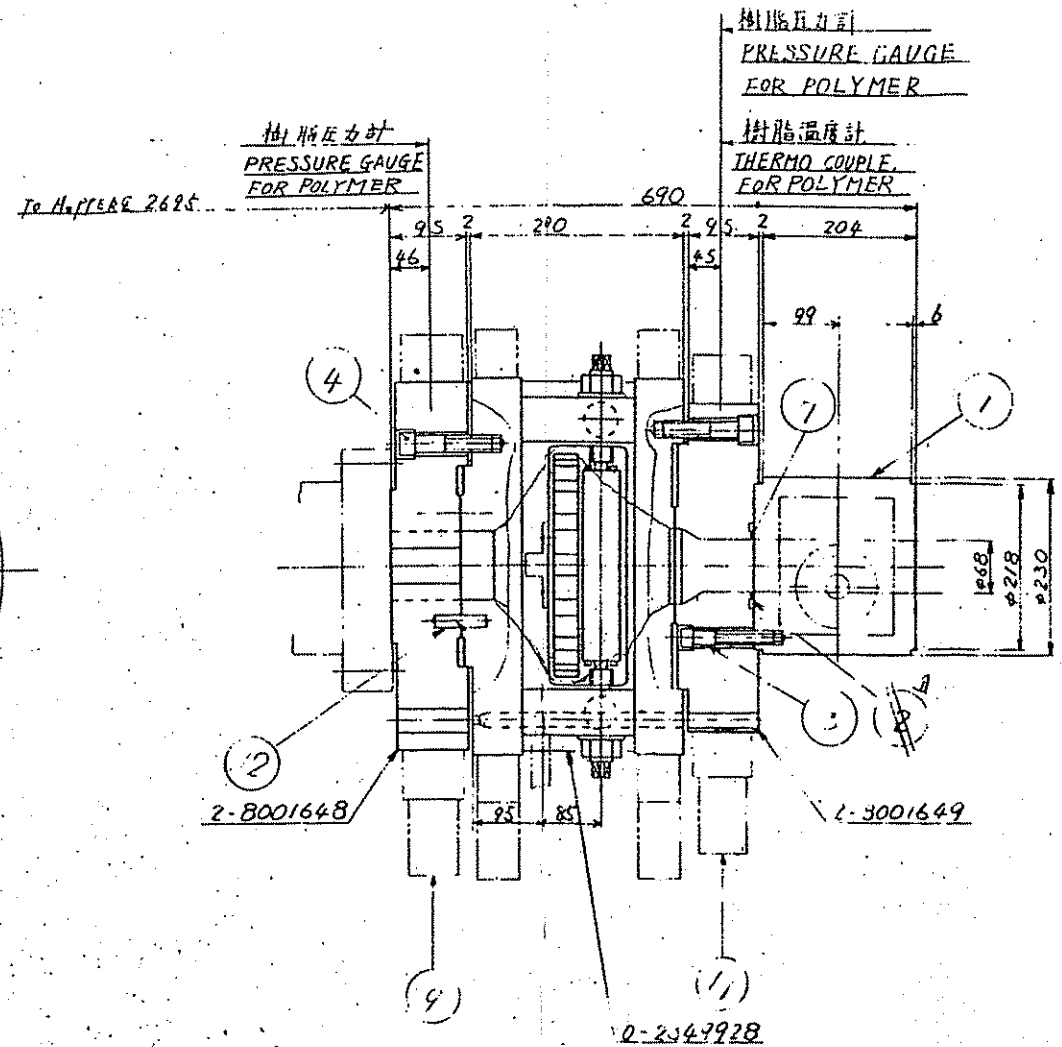
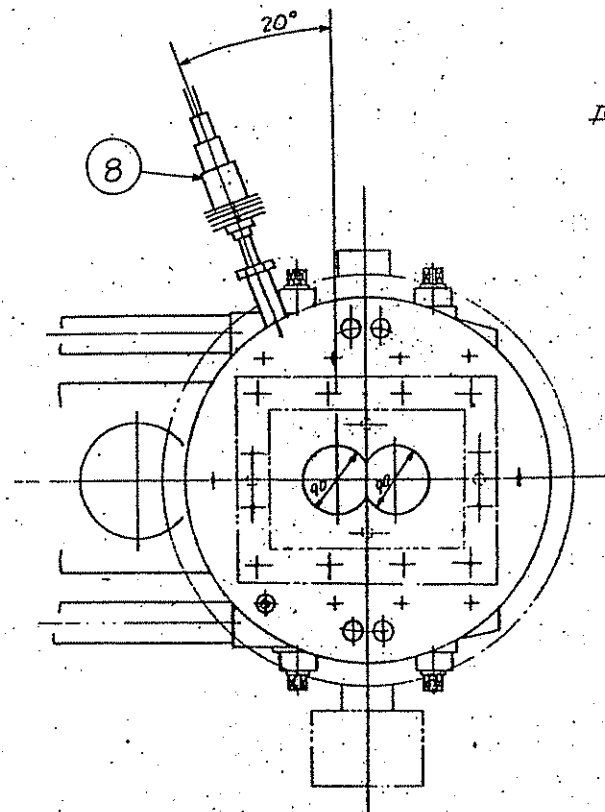
6	HEXAGON SOCKET HEAD CAP SCREW 六角頭六角ボルト M6x20	SCM435	8	-	
5	BUTTON HEAD SOCKET SCREW ボタン頭六角ボルト M12x20	(SCM435)	4	-	70770枚
4	PLAIN WASHER 平ワッシャー M12	SS41	8	-	
3	NUT ナット M12	(SS41)	4	16	
2	STUD BOLT 7本 M12x90x18x38	(SS41)	4T	8	
1	SPRING バネ A24-07	-	8	-	ナニエ標準バネ (用野橋工)

P.C. NO.	NOMENCLATURE	MATERIAL	SPECIMEN	REQ'D QUANTITY	SPARE QUANTITY	WEIGHT (kg) EACH	REMARKS
ASSY OF GLAND SEAL グランドシールアッシー							(6.5)
TEX90							SCALE 1:2
PURCHASER							DATE ISSUED
USER							DATE COMP
PURCHASER'S DWG NO							REV
THE JAPAN STEEL WORKS, LTD. HIROSHIMA PLANT							3RD ANGLE PROJECTION
DL30-0736							NOV. 10. 86
JOB NO. (SHEET NO.) PURCHASER'S ORDER NO.							K12-8002227



ITEM NO.	DESCRIPTION	QTY	UNIT	REMARKS
1	PIPE 1/2"	26	FT	
2	PIPE 3/4"	13	FT	
3	PIPE 1"	13	FT	
4	PIPE 1 1/2"	13	FT	
5	PIPE 2"	13	FT	
6	PIPE 2 1/2"	13	FT	
7	PIPE 3"	13	FT	
8	PIPE 4"	13	FT	
9	PIPE 6"	13	FT	
10	PIPE 8"	13	FT	
11	PIPE 10"	13	FT	
12	PIPE 12"	13	FT	
13	PIPE 14"	13	FT	
14	PIPE 16"	13	FT	
15	PIPE 18"	13	FT	
16	PIPE 20"	13	FT	
17	PIPE 24"	13	FT	
18	PIPE 30"	13	FT	
19	PIPE 36"	13	FT	
20	PIPE 42"	13	FT	
21	PIPE 48"	13	FT	
22	PIPE 54"	13	FT	
23	PIPE 60"	13	FT	
24	PIPE 72"	13	FT	
25	PIPE 84"	13	FT	
26	PIPE 96"	13	FT	
27	PIPE 108"	13	FT	
28	PIPE 120"	13	FT	
29	PIPE 144"	13	FT	
30	PIPE 168"	13	FT	
31	PIPE 192"	13	FT	
32	PIPE 216"	13	FT	
33	PIPE 240"	13	FT	
34	PIPE 288"	13	FT	
35	PIPE 336"	13	FT	
36	PIPE 384"	13	FT	
37	PIPE 432"	13	FT	
38	PIPE 480"	13	FT	
39	PIPE 528"	13	FT	
40	PIPE 576"	13	FT	
41	PIPE 624"	13	FT	
42	PIPE 672"	13	FT	
43	PIPE 720"	13	FT	
44	PIPE 768"	13	FT	
45	PIPE 816"	13	FT	
46	PIPE 864"	13	FT	
47	PIPE 912"	13	FT	
48	PIPE 960"	13	FT	
49	PIPE 1008"	13	FT	
50	PIPE 1056"	13	FT	
51	PIPE 1104"	13	FT	
52	PIPE 1152"	13	FT	
53	PIPE 1200"	13	FT	
54	PIPE 1248"	13	FT	
55	PIPE 1296"	13	FT	
56	PIPE 1344"	13	FT	
57	PIPE 1392"	13	FT	
58	PIPE 1440"	13	FT	
59	PIPE 1488"	13	FT	
60	PIPE 1536"	13	FT	
61	PIPE 1584"	13	FT	
62	PIPE 1632"	13	FT	
63	PIPE 1680"	13	FT	
64	PIPE 1728"	13	FT	
65	PIPE 1776"	13	FT	
66	PIPE 1824"	13	FT	
67	PIPE 1872"	13	FT	
68	PIPE 1920"	13	FT	
69	PIPE 1968"	13	FT	
70	PIPE 2016"	13	FT	
71	PIPE 2064"	13	FT	
72	PIPE 2112"	13	FT	
73	PIPE 2160"	13	FT	
74	PIPE 2208"	13	FT	
75	PIPE 2256"	13	FT	
76	PIPE 2304"	13	FT	
77	PIPE 2352"	13	FT	
78	PIPE 2400"	13	FT	
79	PIPE 2448"	13	FT	
80	PIPE 2496"	13	FT	
81	PIPE 2544"	13	FT	
82	PIPE 2592"	13	FT	
83	PIPE 2640"	13	FT	
84	PIPE 2688"	13	FT	
85	PIPE 2736"	13	FT	
86	PIPE 2784"	13	FT	
87	PIPE 2832"	13	FT	
88	PIPE 2880"	13	FT	
89	PIPE 2928"	13	FT	
90	PIPE 2976"	13	FT	
91	PIPE 3024"	13	FT	
92	PIPE 3072"	13	FT	
93	PIPE 3120"	13	FT	
94	PIPE 3168"	13	FT	
95	PIPE 3216"	13	FT	
96	PIPE 3264"	13	FT	
97	PIPE 3312"	13	FT	
98	PIPE 3360"	13	FT	
99	PIPE 3408"	13	FT	
100	PIPE 3456"	13	FT	

THIS DRAWING IS THE PROPERTY OF THE JAPAN STEEL WORKS, LTD. AND ISSUED FOR CONFIDENTIAL USE OF THE RECEIVER ONLY. DRAWING MAY NOT BE COPIED OR REPRODUCED IN ANY MANNER OR RELEASED TO A THIRD PARTY WITHOUT PRIOR WRITTEN PERMISSION FROM THE JAPAN STEEL WORKS, LTD.



NO.	MONUMENTATION	MATERIAL	SPECIMEN	QTY	WEIGHT	REMARKS
3	ADAPTER	SUS304		1	1.1	
3	ADAPTER	SUS304		1	1.4	
1	ADAPTER	SS41		1	95.0	
0-2349928	FLANGE	SS41		1	398.2	
2-8001648	FLANGE	SS41		1	129	
3	GASKET	AIC50P		2	-	
12	AL HEATER	SS41		2	-	
11	AL HEATER			1	74	P1160001-0
4	AL HEATER			1	74	P1160001-0
8	PRESSURE GAUGE FOR POLYMER			1	-	P1727446
7	THERMO COUPLE FOR POLYMER			1	-	P1725540
6	PRESSURE GAUGE FOR POLYMER			1	-	P1725540
5	HEXAGON SOCKET HEAD BOLT	SCM435		18	-	
4	HEXAGON SOCKET HEAD BOLT	SCM435		8	-	
2	GASKET			1	-	P1160001-0
1	GEAR PUMP			1	-	P1159715

SCALE 1:5

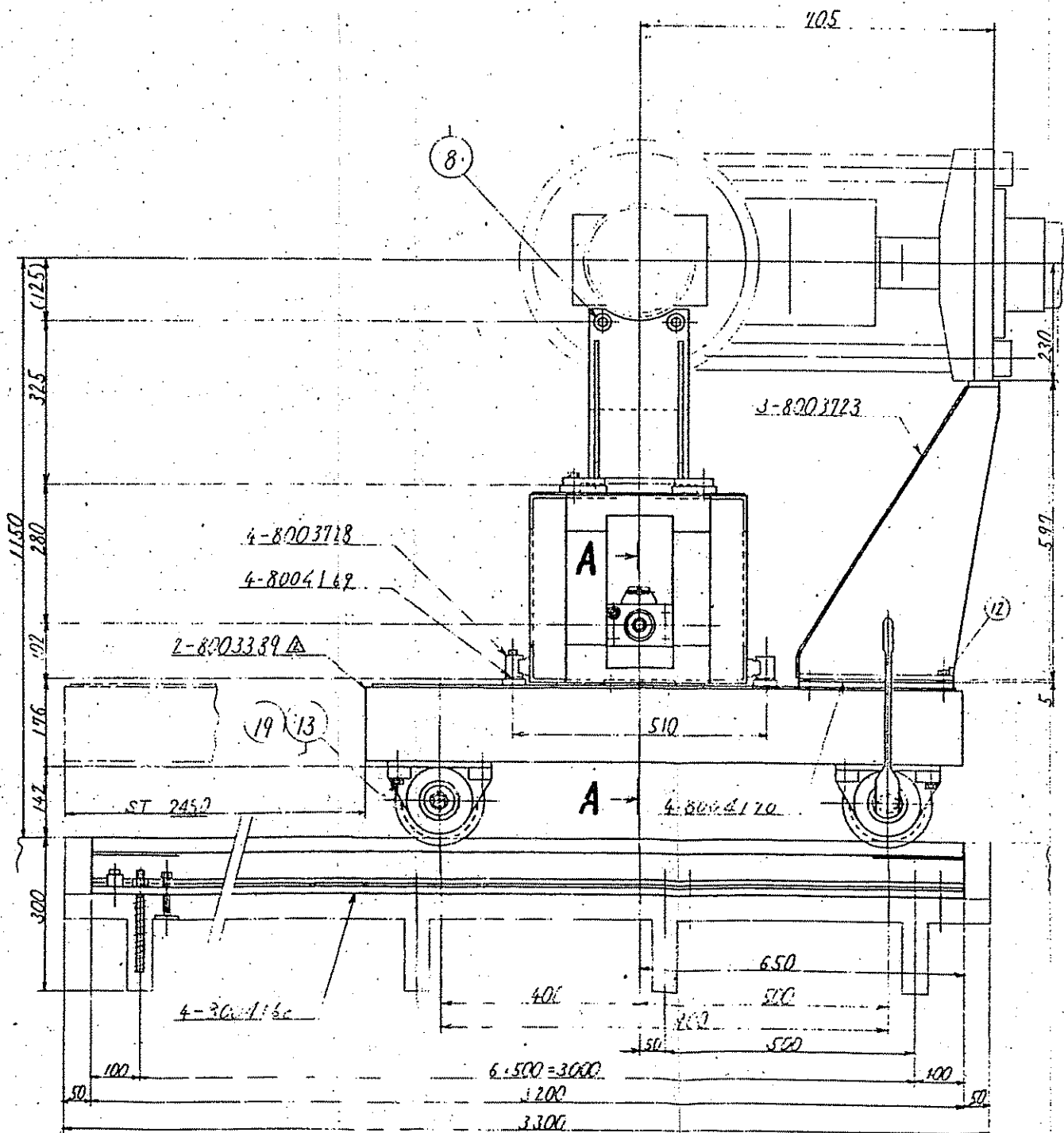
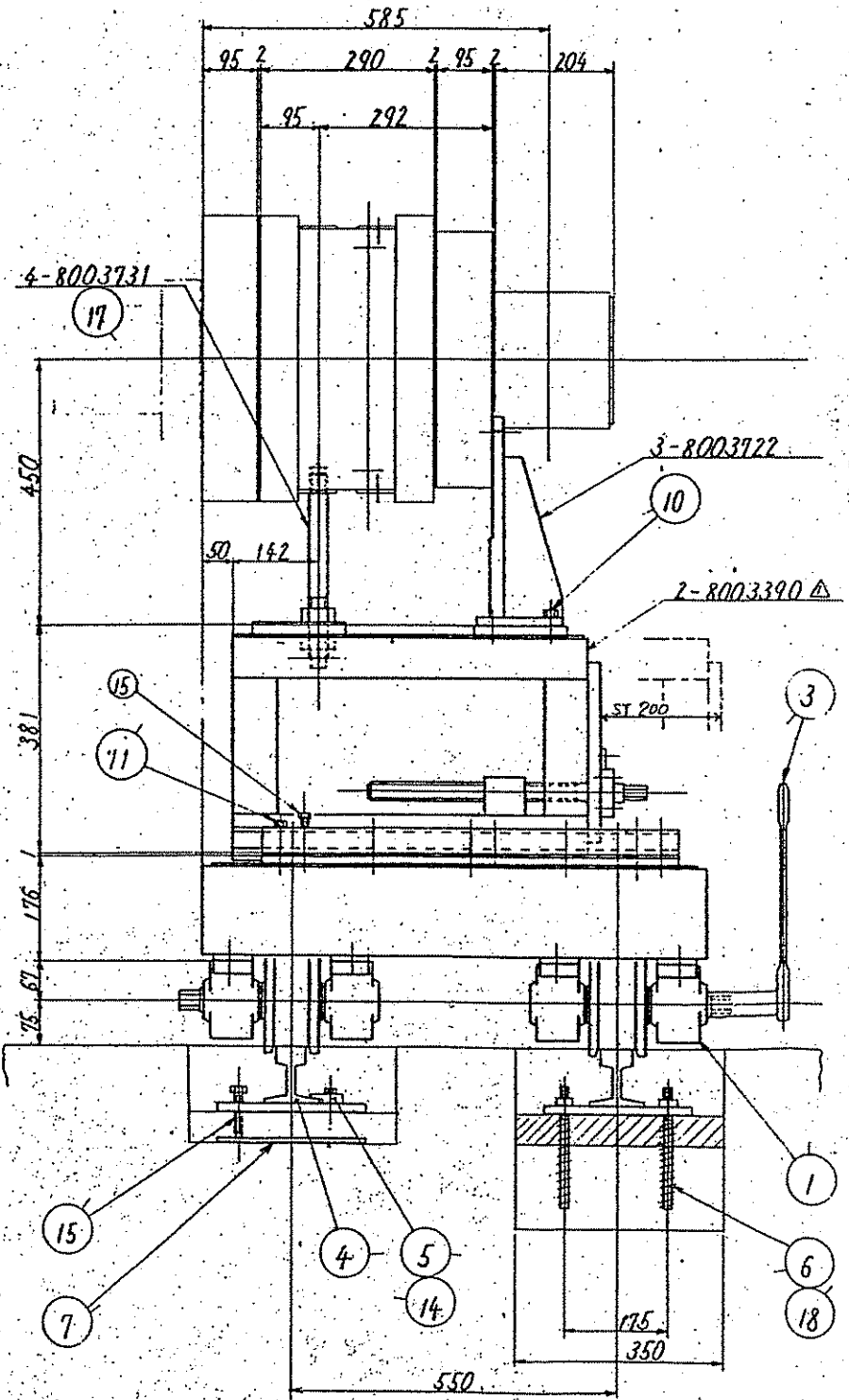
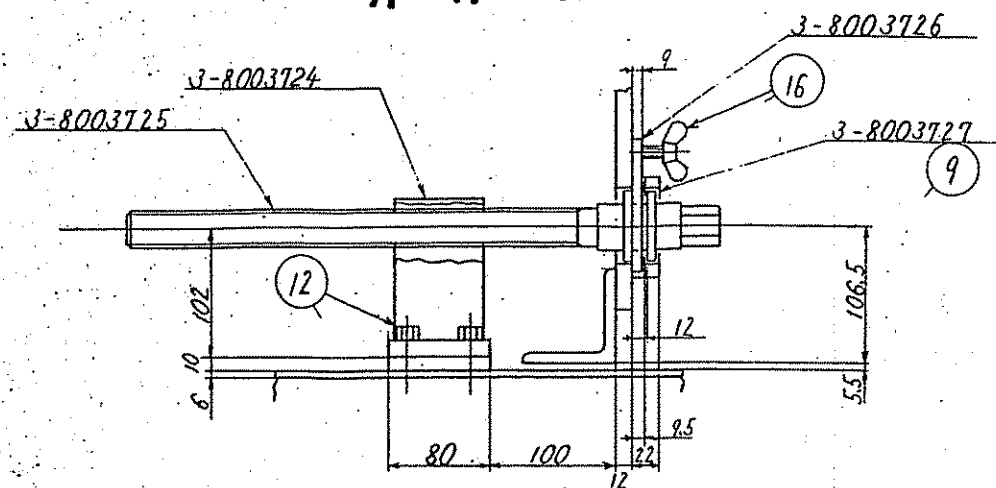
SUB ASSY OF SCREEN CHANGER & GEAR PUMP

THE JAPAN STEEL WORKS, LTD. HIROSHIMA PLANT

1-80028397

THIS DRAWING IS THE PROPERTY OF THE JAPAN STEEL WORKS, LTD. AND ISSUED FOR CONFIDENTIAL USE OF THE RECEIVER ONLY. DRAWING MAY NOT BE COPIED OR REPRODUCED IN ANY MANNER OR RELEASED TO A THIRD PARTY WITHOUT PRIOR WRITTEN PERMISSION FROM THE JAPAN STEEL WORKS, LTD.

A-A (1:3)



4-8004170	LINEK	SS41	SET	1	2.3
4-8004149	LINEK	SS41	SET	4	0.1
4-8004168	PLATE	SS41		2	81.0
4-8003731	STUD	J25C		2	2.0
4-8003728	RETAINER PLATE	SS41		2	10.2
3-8003726	PLATE	SS41		1	0.3
3-8003727	PLATE	SS41		1	1.8
3-8003725	SHAFT	SS41	SET	1	3.4
3-8003724	SUPPORT	SS41	SET	1	4.0
3-8003723	SUPPORT	SS41	SET	1	26.6
3-8003722	SUPPORT	SS41	SET	1	14.9
2-8003390A	SUPPORT	SS41	SET	1	75.2
2-8003389A	SUPPORT	SS41	SET	1	211.6

19	SPRING WASHER	SWRH		16	
18	HEXAGON NUT			4	28
17	HEXAGON NUT			4	
16	WING BOLT	SS41		1	
15	DOG POINT BOLT	ST		30	0.1
14	HEXAGON HEAD BOLT	4T		24	
13	HEXAGON HEAD BOLT	4T		16	
12	HEXAGON HEAD BOLT	4T		8	
11	HEXAGON HEAD BOLT	4T		10	0.1
10	HEXAGON HEAD BOLT	4T		4	
9	HEXAGON SOCKET HEAD BOLT	SCM435		4	
8	HEXAGON SOCKET HEAD BOLT	SCM435		2	0.1
7	PLATE			12	0.9
6	FUJI ANCHOR BOLT	SD30		28	0.2
5	ANCHOR BOLT			24	
4	ANCHOR BOLT			2	70.4
3	ANCHOR BOLT			2	1.3

WHEEL
φ150

11-80041987

THE JAPAN STEEL WORKS, LTD.
HIROSHIMA PLANT

SCALE 1:6

DATE 7.23

DESIGNED BY E. TERAMOTO

CHECKED BY

APPROVED BY

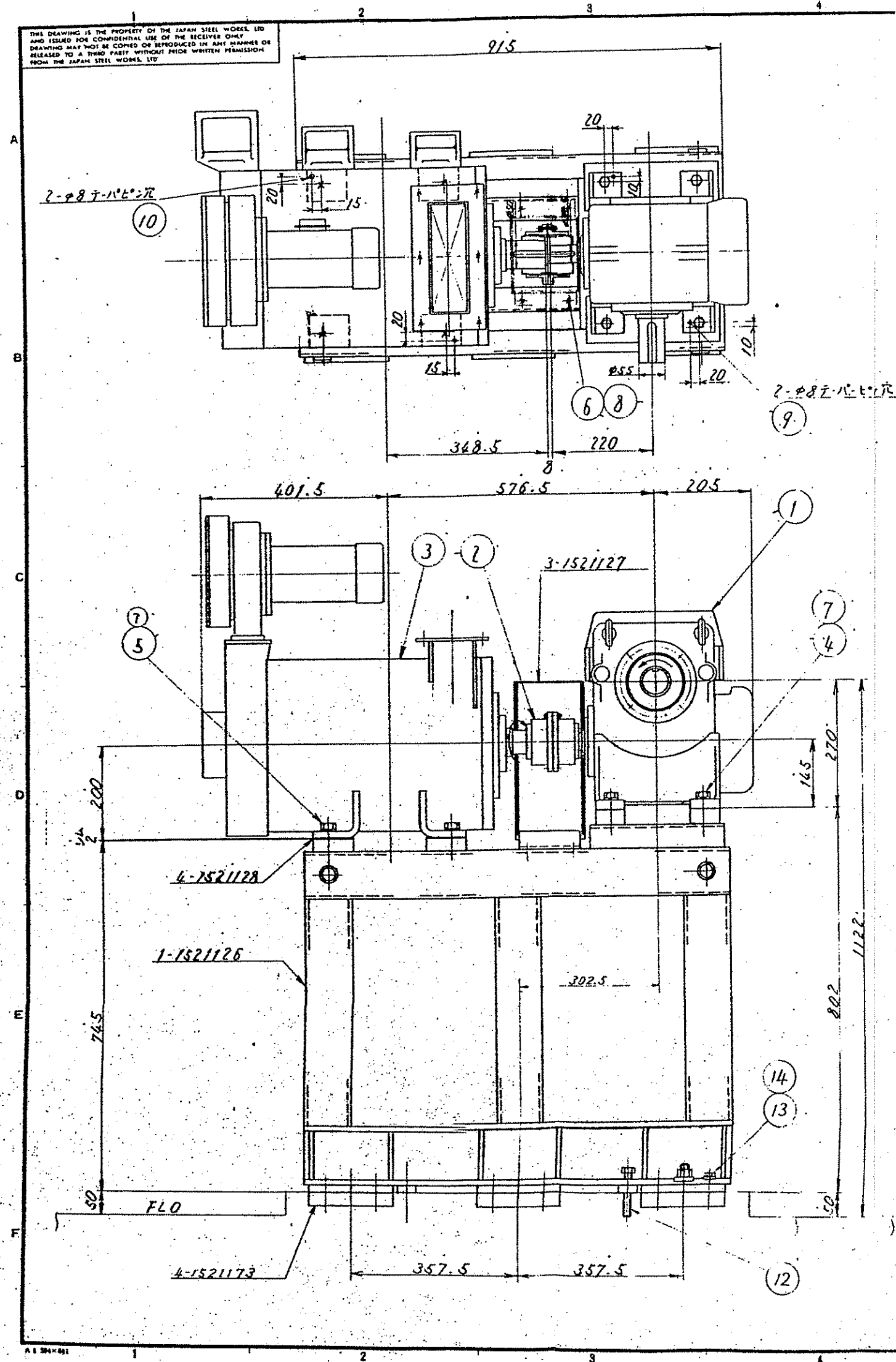
PURCHASER'S DIV. NO.

DATE

FIG. NO.

NO. OF SHEETS

THIS DRAWING IS THE PROPERTY OF THE JAPAN STEEL WORKS LTD AND ISSUED FOR CONSIDERATION USE OF THE RECEIVER ONLY. DRAWING MAY NOT BE COPIED OR REPRODUCED IN ANY MANNER OR RELEASED TO A THIRD PARTY WITHOUT PRIOR WRITTEN PERMISSION FROM THE JAPAN STEEL WORKS LTD.



SPECIFICATION

1. MOTOR CAP. / SPEED - - - - 5.5 kW / 1450 rpm
2. OUTPUT SPEED FOR GEAR REDUCER - - - 117.6 rpm
3. REDUCTION RATIO - - - - 1 : 12.33

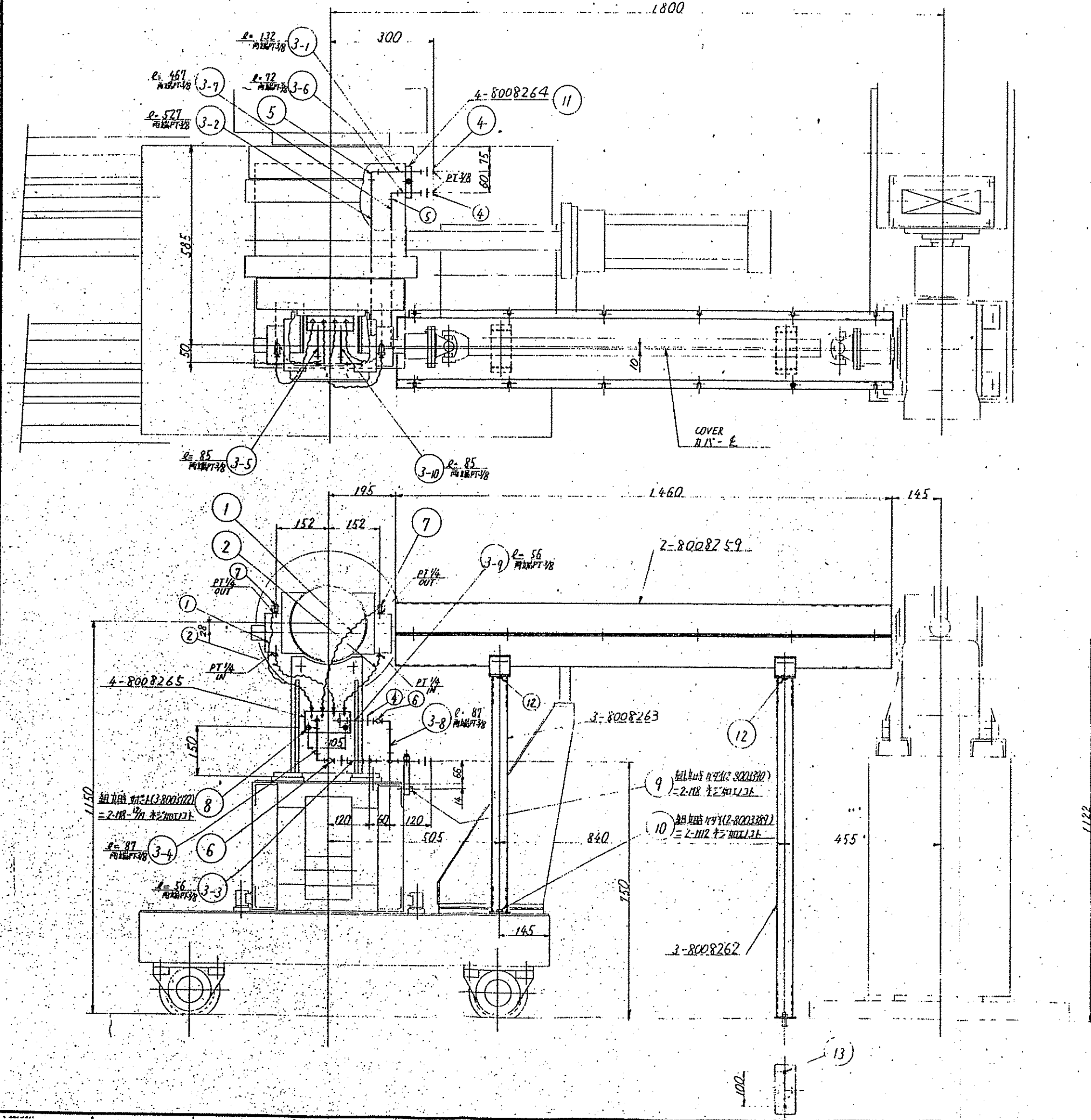
PC NO	QTY	ITEM	MATERIAL	SPEC	WEIGHT	REMARKS
4-1521173	6	LINER	SS41		4.2	
4-1521128	4	SHIM	C280P-1/4H		-	
3-1521127	1	COVER	SS41		2.5	
1-1521126	1	SUPPORT	STP63B-S		143.3	
7	4	HEXAGON NUT	T1 M20		6	
16	6	TAPER WASHER	SS41		0.1	
15	6	PLAIN WASHER	SS41		-	
14	12	TAPER WASHER	SS41		-	
13	12	HEXAGON HEAD BOLTS	T M12 x 50		-	
12	4	HEXAGON HEAD BOLTS	T M16 x 90 (6)		-	
11	6	HEXAGON HEAD BOLT	T M20 x 400 (100)		1.0	
10	2	TAPER PIN	T M20 x 40 (2)		-	
9	2	TAPER PIN	T M22 x 50 (2)		-	
8	4	SPRING WASHER	SWRH		-	
7	8	SPRING WASHER	SWRH		-	
6	4	HEXAGON HEAD BOLTS	T M6 x 12		-	
5	4	HEXAGON HEAD BOLTS	T M16 x 60		0.1	
4	4	HEXAGON HEAD BOLTS	T M16 x 50		0.1	
3	1	MOTOR	5.5 kW / 1450 rpm		300.0	
2	1	GEAR COUPLING	PT-SS41		5.7	P1263702-①
1	1	WORM GEAR REDUCER	SHIMIZU SP-125		83.0	P1263701-①

DRIVE UNIT ASS'Y
TEX 90C-3DAW-2V

THE JAPAN STEEL WORKS, LTD.
HIROSHIMA PLANT

1-1521125

THIS DRAWING IS THE PROPERTY OF THE JAPAN STEEL WORKS, LTD. AND ISSUED FOR CONFIDENTIAL USE OF THE RECEIVER ONLY. DRAWING MAY NOT BE COPIED OR REPRODUCED IN ANY MANNER OR RELEASED TO A THIRD PARTY WITHOUT PRIOR WRITTEN PERMISSION FROM THE JAPAN STEEL WORKS, LTD.



4-8008264	SUPPORT 4 1/2" x 1/2"	SS41	1	1.2	
4-8008265	BLOCK 7" x 2 1/2"	SS41	1	2.5	
3-8008263	SUPPORT 4 1/2" x 1/2"	SS41	1	3.3	
3-8008262	SUPPORT 4 1/2" x 1/2"	SS41	1	4.5	
2-8008259	COVER 11 1/2" x 11 1/2"	SPCC	1	11.2	
13	JET ANCHOR 2 1/2" x 2 1/2" x 1210		1		1
12	HEXAGON HEAD BOLT 1/2" x 1 1/2"	4T	4		
11	HEXAGON HEAD BOLT 1/2" x 1 1/2"	4T	1		
10	HEXAGON HEAD BOLT 1/2" x 1 1/2"	4T	2		
9	HEXAGON SOCKET HEAD BOLT 1/2" x 1 1/2"	SCM435	2		
8	HEXAGON SOCKET HEAD BOLT 1/2" x 1 1/2"	SCM435	2		
7	ELBOW 2 1/2" x 2 1/2" x 1/2"	FCMB (B)	2	0.1	
6	NIPPLE 2 1/2" x 2 1/2" x 1/2"		2	0.1	
5	ELBOW 2 1/2" x 2 1/2" x 1/2"		8	0.1	
4	UNION 2 1/2" x 2 1/2" x 1/2"	FCMB (B)	4	0.2	1/2" x 1/2" x 1/2"
3	PIPE 1 1/2" x 1/2" x 2000	SGP	1	1.4	
2	FLEXIBLE HOSE 1/2" x 1/2" x 2 1/2"		2		P11603589-0
1	FLEXIBLE HOSE 1/2" x 1/2" x 2 1/2"		2		P11603589-0
PC NO.	NOMENCLATURE	MATERIAL	SPECIFICATION	WEIGHT (kg)	REMARKS
TEX90					
<p>SCALE 1:6</p> <p>DATE 1987.12.17</p> <p>DESIGNED BY H. KAWAMOTO</p> <p>DRAWN BY E. TAMURA</p> <p>DATE 1987.12.17</p>					
<p>THE JAPAN STEEL WORKS, LTD. HIROSHIMA PLANT</p>					
<p>1-8008257</p>					