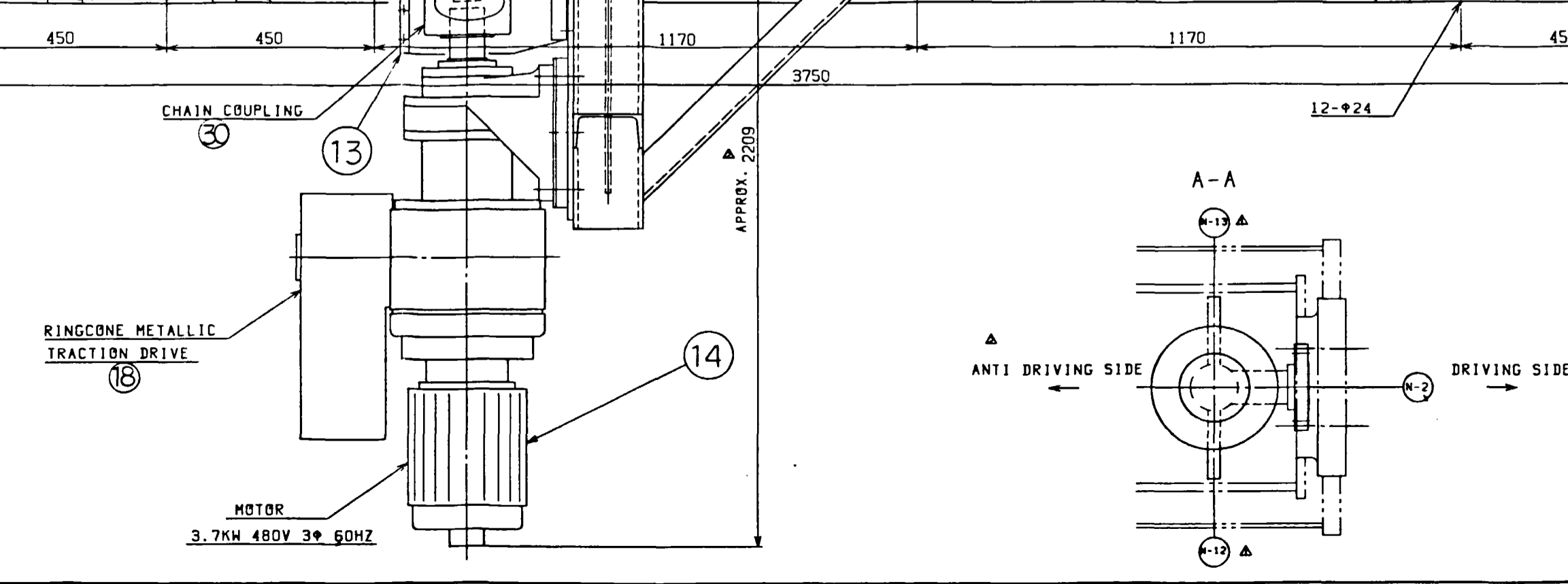


MARK	NO.	NOZZLE	SCHED	RATING	SERVICE	PROJ. & TO FACE	REMARKS
N-10	3/4"	1	ASCH40	▲	HT INLET	JKT'D FLANG	
N-9	3/4"	1	▲	▲	HT INLET	JKT'D FLANG	
N-8	6/4"	1	▲	▲	VAPOR OUTLET	REACTOR BOTTOM	
N-7	NPT1/2	3	▲	▲	THERMOCOUPLE	VAPOR SPACE	
N-6	NPT1/2	1	ASCH40	▲	THERMOCOUPLE		
N-4	2-1/4"	1	ASCH40	▲	CORR. COUP.	▲	
N-3	2-1/4"	1	▲	▲	CORR. COUP.	▲	
N-2	2-1/2"	1	▲	▲	DRAIN	RAM VALVE	
N-1	2-1/2"	1	ASCH40	▲	INLET NOZZLE		



EXTRACTION SCREW DATA SHEET		MATERIAL SPECIFICATION		AGITATOR DESIGN DATA		VESSEL DESIGN DATA	
REQ'D NO.	1 SET	SHELL	JACKET	REQ'D NO.	2 SETS	REQ'D NO.	1 SET
DESIGN PRESS.	400 C 1400 C	SHELL	SA193-B7/SA194-2H	DESIGN PRESS.	60 C	DESIGN PRESS.	APPROX. 1401 MPa
DESIGN TEMP.	400 C 1400 C	JACKET	SA193-B7/SA194-2H	DESIGN TEMP.	60 C	DESIGN TEMP.	APPROX. 1401 MPa
REVOLUTION	50 RPM	IMPELLER	SA193-B7/SA194-2H	DESIGN AREA	5.5KW 480V 3P 60HZ	DESIGN AREA	APPROX. 1401 MPa
FLOW RATE	APPROX. 1000 LPM	SEALANT	JIS 5541	REDUCTION GEAR	BEIER CYCLO VARIABLE REDUCTION GEAR	REDUCTION GEAR	APPROX. 1401 MPa
SEAL METHOD	GLAND	LUG	JIS 5541	REDUCTION GEAR	BEIER CYCLO VARIABLE REDUCTION GEAR	REDUCTION GEAR	APPROX. 1401 MPa

NOTES

- DIMENSIONS PUT IN PARENTHESES SHOWN IN ROUND NUMBERS.
- WE WILL INFORM YOU OF THE INTERFACE OF MECHANICAL SEAL LATER.
- THE ALLOWABLE DEFLECTION OF STRUCTURE SUPPLIED BY PURCHASER MUST BE LIMITED TO 0.3 MM.
- ALL FLANGE BOLT HOLES TO STRADDLE NORMAL CENTER LINES.

REVISION

NO.	REVISION	DATE	REVISED BY	CHKD	APPD
10	REVISION				

Hitachi, Ltd.
Tokyo, Japan

P.O. NO. 045-18892-9
R-411
POLYMERIZER REACTOR

3121-710840 3

#82182