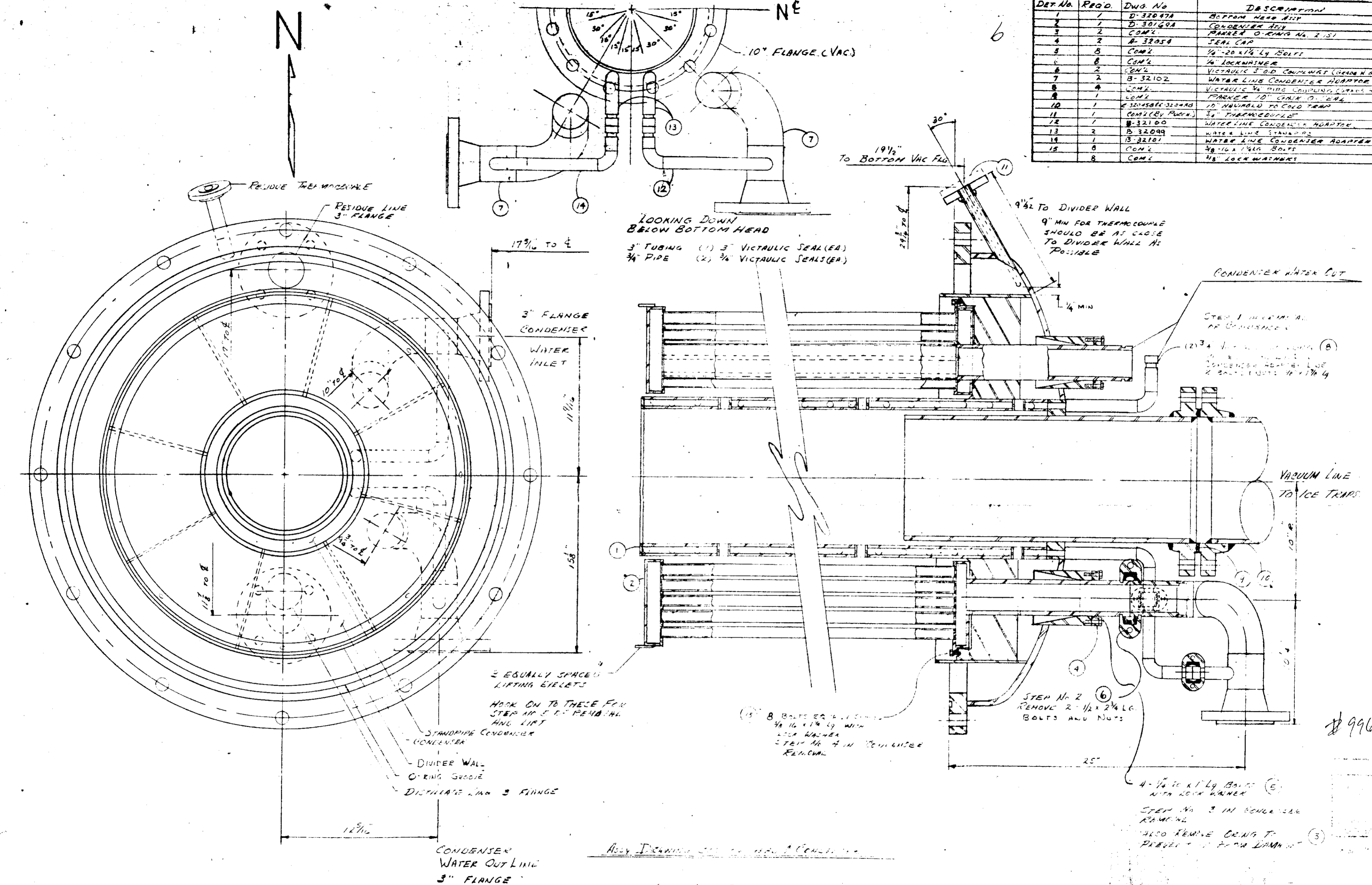


DET No.	REQD.	DWG. No.	DESCRIPTION	QTY
1	1	D-32097A	BOTTOM HEAD ASY	304SLC
2	1	D-30169A	CONDENSER ASY	304SLC
3	2	CON 2	PARKER O-RING No. 2151	VITON A
4	2	A-32058	SEAL CAP	304
5	8	CON 2	1/4" 20 x 1 1/4 LG BOLTS	304
6	8	CON 2	1/4" LOCKWASHER	304
7	2	CON 2	VICTAULIC 3" OD CONDENSER (GRADE N GALV)	304
8	4	CON 2	WATER LINE CONDENSER ADAPTOR	304
9	4	CON 2	VICTAULIC 3/4" WIDE COUPLING, STAINL 4 GALV	304
10	1	E-320586C-320440	10" NAVIGATOR TO COOL TRAP	8X IRON
11	1	CON 2 (BY PURCH)	3/4" THERMOCOUPLE	304
12	1	B-32100	WATER LINE CONDENSER ADAPTOR	304
13	2	B-32099	WATER LINE STANDPIPE	304
14	1	B-32101	WATER LINE CONDENSER ADAPTOR	304
15	8	CON 2	3/8" 16 x 1 1/4 LG BOLTS	304SLC
	8	CON 1	1/8" LOCK WASHERS	304SLC



LOOKING DOWN
BELOW BOTTOM HEAD
3" TUBING (1) 3" VICTAULIC SEAL (EA)
3/4" PIPE (2) 3/4" VICTAULIC SEALS (EA)

STEP No 2 (6)
REMOVE 2 - 1/2 x 2 3/4 LG.
BOLTS AND NUTS

4 - 1/4 x 1 1/4 LG BOLTS (E)
WITH LOCK WASHER
STEP No 3 IN CONDENSER
REMOVING
ALSO REMOVE O-RING TO
PREVENT FROM DAMAGING (3)

SEE DRAWING D-32097A FOR DIMENSIONAL CONSIDERATIONS
LOCATION OF THE BOLTS
NEXT ASY. DRAWING D-32028A
SEE DRAWING D-32028A FOR DIMENSIONAL CONSIDERATIONS
LOCATION OF THE BOLTS

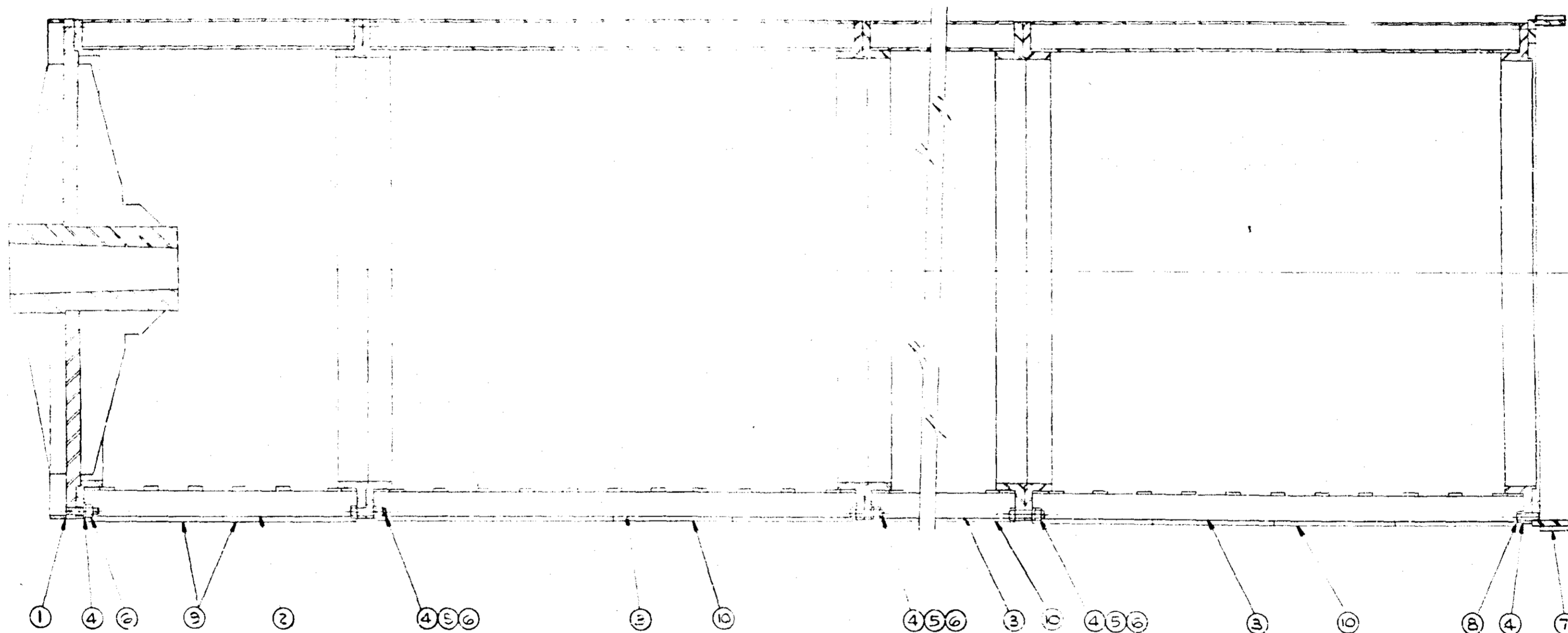
HOFFMANN LA ROCHE
PROJECT 60
MELVIDERE NJ
A L R ORDER No E-280472 B.
M. LEE P.O. BOX 3726-87
RISHTONS: 83-3600, 83-3613, 83-3626
DWG. Nos: 3600-12, 3613-9, 3626-8

#99697

PRINT
JUL-1
ARTHUR G. MC

D-320915

1	1	SH#2	ROTOR, SS316L
2	1	SH#3	RETAINER WIPER & SEPARATOR ASSY.
3	3	SH#4	RETAINER WIPER & SEPARATOR ASSY.
4	60	161558	WASHER SPRING LOCK, SS316, 1/2" LGT
5	50	160203	BOLT, HEX. HD, FIN., SS316, 1/2-13 X 1 1/2" LG.
6	60	1601819	NUT, HEX, SS316, 1/2-13
7	1	SH#5	RING, MTG., WEAR BLOCK
8	12	1602126	BOLT, HEX. HD, FIN., SS316, 1/2-13 X 1" LG.
9	8	SH#6	BLADE, WIPER, RULON P, 9 1/2" LG.
10	48	221405/221402	BLADE, WIPER, RULON P, 8 1/4" LG.



THIS DOCUMENT IS THE PROPERTY OF THE PFAUDLER CO. IT IS TO BE USED ONLY FOR THE PURPOSE FOR WHICH IT WAS ISSUED AND MUST NOT BE REPRODUCED WITHOUT WRITTEN PERMISSION OR USED IN ANYWAY DETRIMENTAL TO THE INTEREST OF THIS COMPANY IT IS SUBJECT TO RETURN UPON REQUEST.

ISSUED MAR 13 1980
THE PFAUDLER CO.
 A DIVISION OF SYBRON CORPORATION
 ROCHESTER, N. Y.

EVP-154

CUSTOMER: HOFFMANN-LA ROCHE INC.
 ADDRESS: NUTLEY, N.J.
 CONSIGNEE: HOFFMANN-LA ROCHE INC.
 ADDRESS: BELVIDERE, J.J.
 CUSTOMER ORDER NO.: E664482 B

TAG: B3-3626 CCDE: EVP-154

ROTOR ASSY., S.S. 316L
 FOR 90 O.F.T. EVAPORATOR

REV	DATE	REVISION	APP'D	REFERENCES
1				8372-0437 SH#1
2				USED ON
3				
4				
5				
6				
7				
8				
9				
10				

PFAUDLER
 DIVISION OF SYBRON CORPORATION
 ROCHESTER N.Y. & ELYRIA, OHIO U.S.A.
 SYBRON Pfaudler

SCALE: 1" = 1'-0"
 DRAWN: AD DATE: 3/12/80
 CHECKED: WJC DATE: 3/12/80
8578-0406