



Heat Exchangers for Sale in Wilmington, NC



Major Chemical Plant Liquidation - Over 1,000 items available
Buy directly from the site and save!

Item #	Sq. Ft.	Material: Shell/Tube/Head	Shell PSI	Tube PSI
104207	19,556	304SS/304SS/CS	75@300°F	100@150°F
104306	19,556	304SS/304SS/CS	75@300°F	100@150°F
104324	9,262	304SS/304SS/CS	125FV@280°F	100@280°F
104546	9,100	304SS Clad/304SS/CS	125FV@280°F	100@280°F
104549	9,100	304SS Clad/304SS/CS	125FV@280°F	100@280°F
104213	8,240	CS/316SS/316SS	300@650°F	150FV@550°F
104318	8,042	CS/304SS/304SS	150@350°F	75@350°F
104545	8,042	CS/304SS/304SS	150@350°F	75@350°F
104190	7,062	316SS/316SS/316SS	150@400°F	150@400°F
104285	7,062	316LSS/316LSS/316LSS	150@400°F	150@400°F
104240	7,000	CS/SS/SS	125FV@250°F	100@280°F
104370	6,990	CS/304SS/304SS	300@650°F	150FV@550°F
104099	6,700	CS/316SS/316SS	300@600°F	50FV@600°F
104398	6,440	CS/316SS/316SS	175@377°F	15@250°F
104256	6,000	CS/304SS/304SS	165@370°F	100@370°F
104381	6,000	CS/304SS/304SS	1656@370°F	100@370°F
104035	5,980	304SS/304SS/CS	75@300°F	75@300°F
104134	5,980	304SS/304SS/CS	75@300°F	75@300°F
104354	5,883	CS/Duplex 2205/304SS	150@350°F	75FV@350°F
104077	5,830	CS/316SS/316SS	750@375°F	30@400°F
104377	5,722	CS/316SS/316SS	300@700°F	100FV@650°F
104304	5,324	CS/316SS/316SS	75@350°F	75@350°F

OTHER HIGHLIGHTED ITEMS:



**23,000 Gallon Reactor
(One of Four) #103952**



**32,600 Gallon Vessel
#105866**



**8'0"x40'0" Steam Tube Dryer
#104443**

Louisiana Chemical Equipment Co, LLC
sales@LCEC.com www.LCEC.com
(281) 479-4900

Item #	Sq. Ft.	Material: Shell/Tube/Head	Shell PSI	Tube PSI
104305	5,324	CS/316SS/316SS	75@350°F	75@350°F
104205	5,323	CS/316SS/316SS	75@350°F	75@350°F
104206	5,323	CS/316SS/316SS	75@350°F	75@350°F
104032	5,300	CS/316SS/316SS	200@600°F	150@500°F
104127	5,300	CS/316SS/316SS	300@600°F	225@500°F
104226	5,294	CS/Duplex 2205/304LSS	175@375°F	FV@400°F
104202	5,276	316SS/316SS/316SS	550@550°F	550@550°F
104019	5,245	CS/316LSS/316LSS	160@375°F	150@375°F
104275	5,150	CS/316SS/316SS	300@700°F	100FV@650°F
104333	4,800	CS/316SS/316SS	300@650°F	50FV@650°F
104101	4,600	CS/304SS/**	100@450°F	50FV@450°F
104050	4,400	CS/304SS/304SS	75@300°F	FV@300°F
104051	4,400	CS/304SS/304SS	75@300°F	FV@300°F
104083	4,400	304SS/304SS/CS	120FV@280°F	100@280°F
104090	4,400	304SS/304SS/CS	120FV@280°F	100@280°F
104142	4,400	CS/304SS/304SS	75@300°F	FV@300°F
104160	4,400	304SS/304SS/CS	120FV@280°F	100@280°F
104168	4,400	304SS/304SS/CS	120FV@280°F	100@280°F
104392	4,368	CS/304SS/304SS	100@650°F	100@650°F
104191	4,197	CS/304SS/304LSS	175@375°F	150@375°F
104286	4,197	CS/304SS/304LSS	175@375°F	150@375°F
104309	3,900	CS/316SS/316SS	175@350°F	175@350°F
104081	3,832	CS/Duplex 2205/316SS	300@650°F	FV@550°F
104225	3,832	CS/316SS/316SS	300@700°F	100FV@650°F
104505	3,832	CS/Duplex 2205/316SS	300@650°F	FV@550
104209	3,820	CS/316LSS/316LSS	175@350°F	175@350°F
104210	3,757	CS/Duplex 2205/316SS	150@375°F	100@400°F



104370



104381



104077

Louisiana Chemical Equipment Co, LLC
sales@LCEC.com www.LCEC.com
(281) 479-4900

Item #	Sq. Ft.	Material: Shell/Tube/Head	Shell PSI	Tube PSI
104556	3,757	CS/Duplex 2205/316SS	150@375°F	100@400°F
104188	3,720	CS/Duplex 2205/316SS	150@366°F	150@350°F
104189	3,720	CS/Duplex 2205/316SS	150@366°F	150@350°F
104283	3,700	CS/Duplex 2205/Duplex 2205	175@375°F	150@350°F
104284	3,700	CS/Duplex 2205/Duplex 2205	175@375°F	150@300°F
104320	3,610	CS/304SS/304SS	175@375°F	FV@400°F
104061	3,600	CS/316SS/316SS	200@600°F	50FV@500°F
104338	3,520	304SS/304SS/CS	75@300°F	100@300°F
104399	3,432	304SS/304SS/304SS	75@200°F	100@200°F
104130	3,400	CS/316SS/316SS	150@375°F	150@375°F
104131	3,400	CS/316SS/316SS	150@375°F	150@375°F
104003	3,300	316SS/316SS/CS	100@300°F	75@300°F
104004	3,300	316SS/316SS/CS	100@300°F	75@300°F
104005	3,300	316SS/316SS/CS	100@300°F	75@300°F
104006	3,300	316SS/316SS/CS	100@300°F	75@300°F
104007	3,300	316SS/316SS/CS	100@300°F	75@300°F
104008	3,300	316SS/316SS/CS	100@300°F	75@300°F
104103	3,300	316SS/316SS/CS	100@300°F	75@300°F
104104	3,300	316SS/316SS/CS	100@300°F	75@300°F
104105	3,300	316SS/316SS/CS	100@300°F	75@300°F
104107	3,300	316SS/316SS/CS	100@300°F	75@300°F
104108	3,300	316SS/316SS/CS	100@300°F	75@300°F
104109	3,300	316SS/316SS/CS	100@300°F	75@300°F
104110	3,300	316SS/316SS/CS	100@300°F	75@300°F
104500	3,300	316SS/304LSS/CS	100@300°F	75@300°F
104334	3,250	CS/304SS/304SS	165@450°F	75FV@450°F



104083



104191



104209

Louisiana Chemical Equipment Co, LLC
sales@LCEC.com www.LCEC.com
(281) 479-4900

Item #	Sq. Ft.	Material: Shell/Tube/Head	Shell PSI	Tube PSI
104124	3,240	CS/316SS/316SS	200@600°F	600@600°F
104125	3,240	CS/316SS/316SS	200@600°F	600@600°F
104504	3,240	CS/316LSS/316SS	300@600°F	300@600°F
104506	3,240	CS/316SS/316SS	300@600°F	600@600°F
104042	3,230	304SS/304SS/CS	75@300°F	100@300°F
104030	3,140	CS/316SS/316SS	300@650°F	550@550°F
104201	3,140	CS/AL6XN/SS	300@700°F	600@650°F
104509	3,140	CS/316LSS/316SS	300@650°F	550@550°F
104547	3,140	CS/316SS/316SS	200@600°F	600@600°F
104367	3,025	CS/Alloy 20/316SS	300@700°F	600@650°F
104368	3,025	CS/Alloy 20/316SS	300@700°F	600@650°F
104296	3,000	CS/316LSS/316LSS	75@350°F	75@350°F
104266	2,909	CS/316SS/316SS	675FV@550°F	75FV@550°F
104369	2,909	CS/316SS/316SS	675FV@550°F	75FV@550°F
104555	2,909	CS/316SS/316SS	675FV@550°F	75FV@550°F
104161	2,800	CS/304SS/304SS	100@32°F	120@32°F
104169	2,800	CS/304SS/304SS	100@32°F	120@32°F
104244	2,800	304SS Clad/304SS/CS	125FV@280°F	100@280°F
104325	2,800	CS/304SS/304SS	50@300°F	120FV@250°F
104385	2,730	CS/Duplex 2205/CS	175@600°F	840@600°F
104386	2,730	CS/Duplex 2205/CS	175@600°F	840@600°F
104387	2,730	CS/Duplex 2205/CS	175@600°F	840@600°F
104388	2,730	CS/Duplex 2205/CS	175@600°F	840@600°F
104393	2,714	CS/304SS/304SS	100@550°F	100@550°F
104394	2,714	CS/304SS/304SS	100@550°F	100@550°F
104046	2,660	CS/316SS/316SS	200@600°F	FV@550°F



104161



104500



104201

Louisiana Chemical Equipment Co, LLC
sales@LCEC.com www.LCEC.com
(281) 479-4900

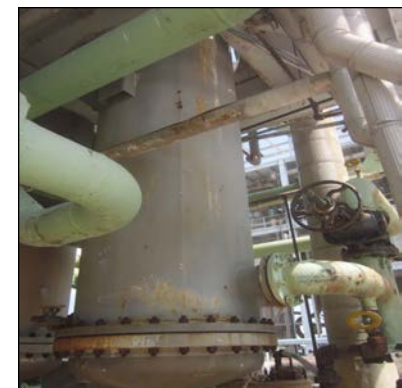
Item #	Sq. Ft.	Material: Shell/Tube/Head	Shell PSI	Tube PSI
104139	2,660	S/316SS/316SS	200@600°F	50@550°F
104088	2,600	304SS/304SS/CS	75@300°F	75@300°F
104164	2,600	304SS/304SS/CS	75@300°F	75@300°F
104214	2,510	CS/Duplex 2205/304SS	175@375°F	FV@350°F
104383	2,500	CS/316LSS/316SS	650@550°F	1180@550°F
104403	2,500	CS/Duplex 2205/CS	175FV@375°F	175FV@375°F
104203	2,463	CS/316SS/316SS	300@600°F	150@500°F
104204	2,463	CS/316SS/316SS	300@650°F	150@500°F
104126	2,400	316SS/316SS/316SS	600@600°F	600@600°F
104245	2,356	CS/Duplex 2205/316SS	175@375°F	175@375°F
104379	2,355	CS/Duplex 2205/316LSS	175@375°F	175@375°F
104040	2,300	CS/316SS/316SS	150@375°F	150@375°F
104076	2,300	CS/304SS/304SS	300@75°F	300@75°F
104163	2,100	CS/304SS/304SS	150@366°F	120FV@250°F
104043	2,060	CS/304SS/304SS	75@300°F	100@300°F
104196	2,046	CS/316SS/316SS	175@365°F	75@365°F
104301	2,004	CS/316SS/316S	175@365°F	75@365°F
104023	2,000	CS/Alloy20/316SS	150@500°F	75@500°F
104054	2,000	CS/304SS/304SS	150@400°F	400@400°F
104063	2,000	CS/304SS/304SS TOP	75@400°F	FV@400°F
104064	2,000	CS/304SS/304SS Top	75@400°F	FV@400°F
104118	2,000	CS/Duplex 2205/SS	150@500°F	100@500°F
104119	2,000	CS/Duplex 2205/SS	150@500°F	100@500°F
104179	2,000	CS/CS/304SS	160@366°F	160@366°F
104261	2,000	CS/304SS/304SS	160@366°F	160@366°F
104340	2,000	304SS/304SS/CS	75@300°F	100@300°F



104369



104023



104118

Louisiana Chemical Equipment Co, LLC
sales@LCEC.com www.LCEC.com
(281) 479-4900

Item #	Sq. Ft.	Material: Shell/Tube/Head	Shell PSI	Tube PSI
104389	1,890	CS/304SS/304SS	100@650°F	50@300°F
104498	1,868	CS/316LSS/316SS	300@650°F	50FV@650°F
104157	1,860	CS/304SS/304SS	150@375°F	150@375°F
104012	1,840	316SS/316SS/CS	75@300°F	75@300°F
104215	1,830	CS/304SS/304SS	175@365°F	FV@350°F
104311	1,830	CS/904SS/301SS	175@365°F	FV@350°F
104502	1,821	CS/316SS/316SS	300@600°F	600@600°F
104058	1,820	CS/316SS/316SS	200@600°F	600@600°F
104059	1,820	CS/316SS/316SS	200@600°F	600@600°F
104237	1,800	CS/316SS/316SS	300@700°F	600@600°F
104372	1,800	CS/Alloy 20/316LSS	300@700°F	600@650°F
104346	1,660	CS/317SS/316SS	300@700°F	50FV@700°F
104217	1,649	CS/304SS/304SS	150FV@400°F	150FV@400°F
104082	1,630	CS/304SS/304SS	150@370°F	120FV@300°F
104089	1,630	CS/304SS/304SS	150@370°F	120FV@300°F
104327	1,575	CS/304SS/304SS	175@375°F	150@375°F
104328	1,575	CS/304SS/304SS	175@375°F	150@375°F
104085	1,572	CS/304SS/304SS	150@375°F	150@375°F
104093	1,572	CS/304SS/304SS	150@375°F	150@375°F
104248	1,572	CS/304SS/304SS	175@375°F	150@350°F
104274	1,572	CS/304SS/304SS	175@375°F	150@375°F
104017	1,500	CS/317LSS/317LSS	300@600°F	74@300°F
104036	1,500	304SS/304SS/CS	75@300°F	75@300°F
104128	1,500	304SS/304SS/CS	75@300°F	75@300°F
104322	1,480	CS/316SS/316SS	75@300°F	75@200°F
104276	1,404	CS/316SS/316SS	165@375°F	150@500°F



104017



104322



104310

Louisiana Chemical Equipment Co, LLC
sales@LCEC.com www.LCEC.com
(281) 479-4900

Item #	Sq. Ft.	Material: Shell/Tube/Head	Shell PSI	Tube PSI
104303	1,404	CS/316SS/316SS	165@375°F	150@500°F
104197	1,402	CS/316SS/**	300@650°F	75@450°F
104251	1,400	CS/304SS/304LSS	100@250°F	75@250°F
104380	1,400	CS/304SS/304SS	100@250°F	75@250°F
104115	1,390	CS/316SS/316SS	150@375°F	150@375°F
104211	1,368	CS/904LSS/316SS	150FV@375°F	100FV@400°F
104310	1,368	CS/904LSS/316SS	150@375°F	100@400°F
104485	1,360	CS/316SS/316SS	300@650°F	75@450°F
104022	1,350	CS/316SS/316SS	75@320°F	75@320°F
104359	1,340	CS/316SS/316SS	300@600°F	150@500°F
104337	1,323	CS/316SS/316SS	75@350°F	75@350°F
104123	1,300	CS/316SS/316SS	200@600°F	600@600°F
104236	1,300	CS/316SS/316SS	75@350°F	75@350°F
104342	1,268	316SS/317LSS/CS	150@550°F	150@400°F
104129	1,260	304SS/304SS/CS	75@300°F	75@300°F
104511	1,260	304SS/304SS/CS	75@300°F	75@300°F
104112	1,195	316SS/316SS/CS	75@300°F	75@300°F
104193	1,195	316SS/316SS/CS	100@300°F	100@300°F
104290	1,195	316SS/316SS/CS	100@300°F	100@300°F
104242	1,178	CS/304SS/304SS	50@300°F	125@250°F
104493	1,177	CS/304SS/304SS	50@300°F	120@250°F
104512	1,177	CS/304SS/304SS	50@300°F	120@250°F
104352	1,169	CS/317SS/316SS	175FV@400°F	50FV@400°F
104199	1,152	CS/316SS/**	300@650°F	550@550°F
104507	1,152	CS/316SS/316SS	300@650°F	550@550°F
104049	1,130	CS/316SS/316SS	300@600°F	FV@500°F



104507



104371



104177

Louisiana Chemical Equipment Co, LLC
sales@LCEC.com www.LCEC.com
(281) 479-4900

Item #	Sq. Ft.	Material: S/T/H	Shell PSI	Tube PSI
104052	1,130	CS/316SS/316SS	300@600°F	FV@500°F
104140	1,130	CS/316SS/316SS	300@600°F	FV@550°F
104141	1,130	CS/316SS/316SS	300@600°F	FV@550°F
104497	1,130	CS/316LSS/316SS	200@600°F	FV@500°F
104405	1,128	316LSS/316SS/CS	175FV@375°F	75FV@375°F
104153	1,120	CS/316SS/316SS	200@600°F	50FV@500°F
104031	1,117	CS/316SS/316SS	675@650°F	75@550°F
104011	1,100	316SS/316SS/CS	75@300°F	75@300°F
104069	1,100	CS/304SS/**	150@370°F	120@300°F
104159	1,100	CS/304SS/304SS	150@370°F	120FV@300°F
104167	1,100	CS/304SS/304SS	150@370°F	120FV@300°F
104171	1,100	CS/304SS/304SS	150@366°F	120FV@250°F
104172	1,100	CS/304SS/304SS	150@366°F	120FV@250°F
104371	1,083	CS/316SS/316SS	100@250°F	75@250°F
104323	1,040	304SS/304SS/304SS	150@400°F	100@150°F
104025	1,000	316SS/316SS/CS	75@300°F	75@300°F
104074	1,000	316SS/316SS/316SS	100@375°F	100@375°F
104084	1,000	CS/Duplex 2205/Duplex 2205	200@450°F	150@450°F
104120	1,000	316SS/316SS/CS	75@300°F	75@300°F
104241	1,000	Duplex 2205/Duplex 2205/Duplex 2205	150@400°F	100@150°F
104365	1,000	CS/304SS/304SS	175@375°F	175@375°F
104177	994	CS/304SS/304SS	75@300°F	75@300°F
104086	935	CS/304SS/304SS	75@300°F	75@300°F
104087	935	CS/304SS/304SS	75@300°F	75@300°F
104165	935	CS/304SS/304SS	75@300°F	75@300°F
104122	920	CS/316SS/316SS	300@650°F	550@550°F



104390



104028



104200

Louisiana Chemical Equipment Co, LLC
sales@LCEC.com www.LCEC.com
(281) 479-4900

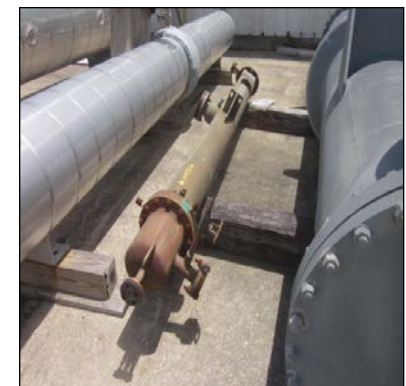
Item #	Sq. Ft.	Material: Shell/Tube/Head	Shell PSI	Tube PSI
104232	903	CS/316SS/SS	300@650°F	FV@550°F
104233	903	CS/316SS/SS	300@650°F	FV@550°F
104013	823	CS/316SS/316SS	75@300°F	75@300°F
104113	823	CS/316SS/316SS	75@300°F	75@300°F
104390	821	316LSS/316LSS/316LSS	1180@550°F	840@650°F
104391	821	316LSS/316LSS/316LSS	1180@550°F	840@650°F
104116	800	CS/316SS/316SS	75@300°F	75@300°F
104018	787	304SS/304SS/CS	50FV@300°F	75@300°F
104291	750	316SS/316SS/316SS	100@300°F	100@300°F
104302	750	CS/316SS/316S	100@250°F	75@250°F
104174	700	CS/304SS/304SS	150@375°F	150@375°F
104348	693	CS/317SS/316SS	300@700°F	50FV@700°F
104218	690	304SS/304SS/CS	150@400°F	100@150°F
104313	690	304SS/304SS/CS	150FV@300°F	100@150°F
104374	690	316SS/Duplex 2205/316SS	150@400°F	100@150°F
104510	690	304SS/304SS/CS	150@400°F	100@150°F
104299	670	CS/316SS/316SS	100@350°F	75@350°F
104360	650	CS/304SS/304SS	150@375°F	150@375°F
104238	640	CS/304SS/304LSS	150@375°F	150@375°F
104192	632	CS/Admiralty/CS	150@275°F	100@150°F
104098	630	304SS/316SS/CS	193@375°F	180FV@375°F
104212	605	CS/304SS/304SS	100@300°F	75@150°F
104028	590	CS/AL6XN/316LSS	300FV@600°F	600FV@600°F
104097	590	CS/304SS/304SS	150@375°F	150@375°F
104239	545	CS/304SS/SS	150@370°F	120FV@299°F



104027



104440



104376

Louisiana Chemical Equipment Co, LLC
sales@LCEC.com www.LCEC.com
(281) 479-4900

Item #	Sq. Ft.	Material: Shell/Tube/Head	Shell PSI	Tube PSI
104488	544	304SS/304SS/304SS	150@370°F	120FV@299°F
104200	503	CS/316SS/316SS	175@375°F	600@375°F
104366	503	CS/316SS/316SS	175@375°F	600@375°F
104329	500	CS/304LSS/CS	300@700°F	175@375°F
104358	500	CS/304SS/304SS	135@400°F	75@406°F
104198	483	CS/316SS/316SS	100@250°F	75@250°F
104539	483	CS/316SS/316SS	165@370°F	100@300°F
104092	480	CS/316SS/316SS	160@366°F	160@366°F
104180	480	CS/316SS/316SS	160@366°F	160@366°F
104297	475	316LSS/316LSS/CS	75@300°F	100@300°F
104145	465	CS/316SS/316SS	150FV@250°F	100@200°F
104020	462	316SS/316SS/CS	75@300°F	75@300°F
104038	462	304SS/304SS/CS	75@300°F	75@300°F
104345	422	CS/317LSS/317LSS	150@300°F	50FV@300°F
104307	400	316LSS/316LSS/CS	175@375°F	175@375°F
104166	395	CS/304SS/304SS	75@300°F	75@300°F
104181	391	CS/CS/CS	300@600°F	160@450°F
104146	390	304SS/304SS/CS	150FV@200°F	100@200°F
104060	385	CS/316SS/316SS	300@650°F	165FV@650°F
104147	360	304SS/304SS/CS	150@200°F	100@200°F
104148	360	304SS/304SS/CS	150@200°F	100@200°F
104339	360	CS/304SS/CS	100@300°F	75@300°F
104298	356	316SS/316SS/CS	75FV@550°F	75@500°F
104208	350	316SS/316SS/CS	100@300°F	100@300°F
104039	344	304SS/304SS/CS	75@300°F	75@300°F
104027	340	CS/316LSS/316LSS	200FV@400°F	600FV@400°F
104158	340	CS/316SS/316SS	150@300°F	150@300°F

**57 COLUMNS
AVAILABLE ON SITE**



**4'0"x70'8" Column
#103460**



**6'0"x105'0" Column
#103458**



**6'6"x119'6" Column
#103530**

Louisiana Chemical Equipment Co, LLC
sales@LCEC.com www.LCEC.com
(281) 479-4900

Item #	Sq. Ft.	Material: Shell/Tube/Head	Shell PSI	Tube PSI
104114	170	CS/316SS/316SS	75@300°F	75@300°F
104154	170	CS/CS/CS	75@300°F	75@300°F
104343	168	316SS/317LSS/CS	50FV@450	100@400°F
104406	164	CS/Duplex 2205/316LSS	100@200°F	150FV@300°F
104400	157	CS/304SS/304SS	100@250°F	100@250°F
104136	150	304SS/304SS/CS	115@300°F	115@300°F
104137	150	304SS/304SS/CS	115@300°F	115@300°F
104257	150	CS/316SS/316SS	100@250°F	100@200°F
104396	150	304SS/304SS/304SS	75@400°F	75@300°F
104402	150	CS/Duplex 2205/Duplex 2205	100@250°F	75@250°F
104395	148	CS/304SS/304SS	100@550°F	50@250°F
104513	145	316SS/316SS/CS	150FV@350°F	150@350°F
104014	127	304SS/304SS/CS	100FV@200°F	100@200°F
104070	120	304SS/304SS/CS	75@300°F	75@300°F
104490	117	CS/90-10 CUNI/CS	150@300°F	150@300°F
104384	113	CS/304SS/304SS	100@300°F	150@365°F
104230	110	304SS/304SS/CS	150@300°F	100@150°F
104246	100	CS/Duplex 2205/316SS	175@375°F	175@375°F
104269	100	316SS/316SS/CS	150FV@350°F	150@350°F
104270	100	316SS/316SS/CS	150FV@350°F	150@350°F
104293	100	304SS/304SS/CS	150FV@250°F	100@200°F
104294	100	304SS/304SS/CS	150FV@250°F	100@200°F
104376	100	316SS/Duplex 2205/316SS	175@375°F	175FV@375°F
104056	99	304SS/304SS/CS	150@175°F	150@250°F
104223	98	CS/304SS/304SS	150FV@100°F	100@150°F
104326	97	CS/316LSS/316LSS	175@375°F	175@375°F

**SILOS AVAILABLE
ON SITE**



**3500 CU sq. ft. - Alum
#103985**

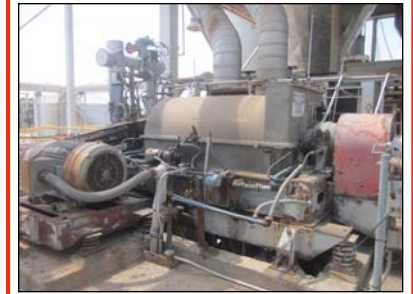


**6000 CU sq. ft. - Alum
#103996**

Louisiana Chemical Equipment Co, LLC
sales@LCEC.com www.LCEC.com
(281) 479-4900

Item #	Sq. Ft.	Material: Shell/Tube/Head	Shell PSI	Tube PSI
104353	96	CS/317SS/316SS	100@300°F	50FV@300°F
104041	90	316SS/316SS/CS	150@365°F	150@365°F
104267	70	316SS/316SS/CS	150FV@350°F	150@350°F
104268	70	316SS/316SS/CS	150FV@350°F	150@350°F
104514	70	316LSS/316SS/CS	150FV@150°F	150@350°F
104015	66	304SS/304SS/CS	150FV@200°F	100@200°F
104021	65	CS/304SS	75@300°F	75@300°F
104096	65	316SS/316SS/316SS	75@300°F	75@300°F
104295	65	CS/304SS/304SS	100@150°F	75@150°F
104231	60	CS/304SS/304SS	150@300°F	100@200°F
104363	60	CS/304SS/304SS Top	150@300°F	75@300°F
104407	60	CS/Duplex 2205/316LSS	100@200°F	150FV@300°F
104057	48	304SS/304SS/CS	150@175°F	100@150°F
104347	45	316SS/317LSS/CS	150FV@400°F	150@400°F
104355	42	CS/Alloy 20/316LSS	175FV@400°F	50FV@400°F
104091	40	CS/316SS/316SS	150@375°F	150@375°F
104173	40	316SS/316SS/CS	150@375°F	150@375°F
104356	39	CS/Alloy 20/316LSS	150@300°F	50FV300°F
104243	30	CS/316SS/316SS	100@250°F	75@250°F
104259	25	CS/CS/CS	300@650°F	100@150°F
104016	23	304SS/304SS/CS	150FV@200°F	100@200°F
104350	17	316SS/317LSS/CS	150FV@400°F	150@400°F
104351	17	316SS/317LSS/CS	150FV@400°F	150@400°F
104344	12	316SS/317LSS/CS	150FV@400°F	150@400°F

**19 CENTRIFUGES
AVAILABLE ON SITE**



**6'0"x36" Centrifuge
#104418**



**5'0"x40" Centrifuge
#104416**

Louisiana Chemical Equipment Co, LLC
sales@LCEC.com www.LCEC.com
(281) 479-4900