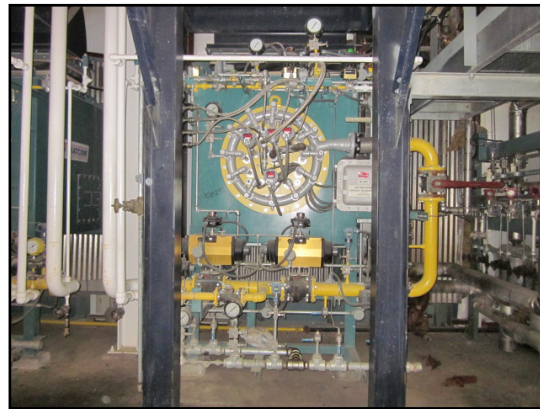




# Two Nebraska Boilers For Sale

**Items 106291 and 106292:** "Price As Is, Where Is"; Built in 2009; 3618 Sq. Ft. Outlet steam conditions: Capacity: 50,000 LB/HR; Operating Pressure 250 PSIG (at exit on non-return valve); Steam temperature superheated to 450°F; Steam purity 1 PPM TDS; Boiler Design: D-Type Industrial Watertube; Model NB-300D-55; Vessel Design Pressure 350 PSIG; Burner Design: Type Low-Nox register; Main fuel: Natural Gas; Backup Fuel: N/A; Economizer Design: Type Rectangular finned-tube; Arrangement vertical gas flow, counter-current water flow; design pressure 400PSIG; Inlet Feedwater Temp 228°F; Stack Design: Type Stub Stack; Diameter (at exit) 36"; Height (from Grade) 50'



For more information please contact  
Louisiana Chemical Equipment Co, LLC  
sales@LCEC.com www.LCEC.com  
281-471-4900