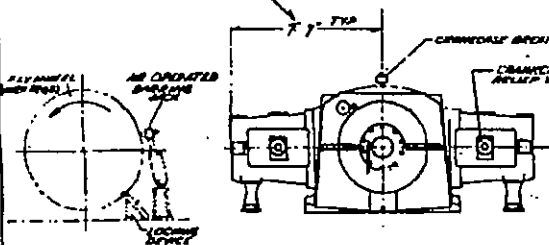


REF# 0819090

DIMENSION FROM C-C CENTERLINE TO FINISHED SURFACE OF CROSSHAIR GUIDE - BOTH SIDES.



BEARING HOLES & LOCKING SCREW PLACEMENT BY C-B CO. LOCATED TO SUIT DRIVING UNIT.

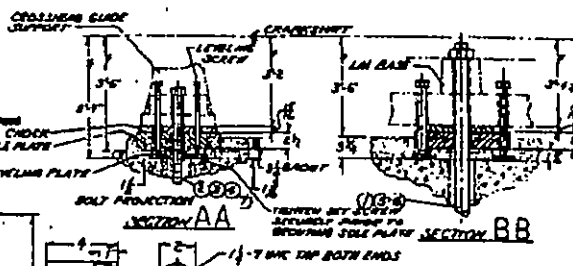
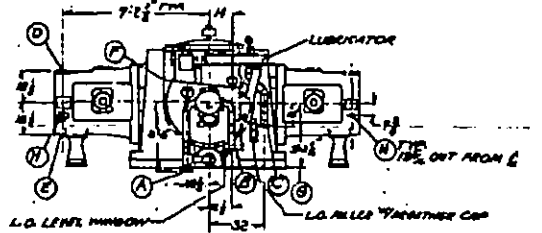
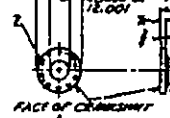
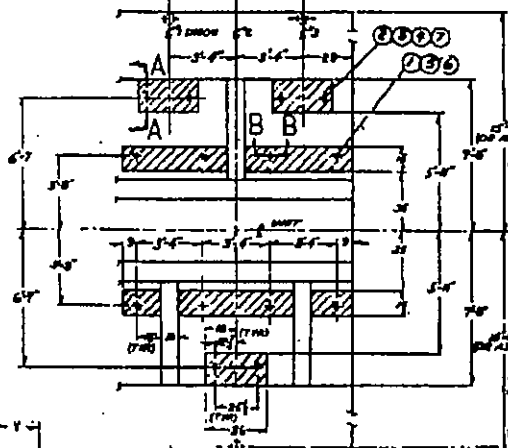
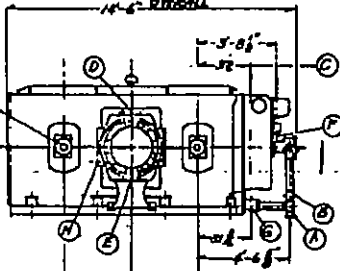
DIMENSIONS CONNECTIONS			
ITEM	DESCRIPTION	UNIT	REFERENCE
1	1/2" DIA. COIL SPRING		
2	1/2" DIA. COIL SPRING		
3	1/2" DIA. COIL SPRING		
4	1/2" DIA. COIL SPRING		
5	1/2" DIA. COIL SPRING		
6	1/2" DIA. COIL SPRING		
7	1/2" DIA. COIL SPRING		
8	1/2" DIA. COIL SPRING		
9	1/2" DIA. COIL SPRING		
10	1/2" DIA. COIL SPRING		
11	1/2" DIA. COIL SPRING		
12	1/2" DIA. COIL SPRING		

NOTES

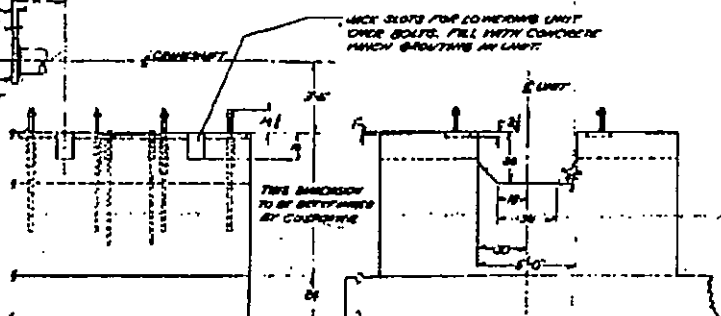
- 1- FLANGES, BOLTS, NUTS & BOLTS FOR ALL CUSTOMER'S STANDARD AND CONNECTIONS ARE FURNISHED BY OTHERS.
- 2- FOUNDATION DIMENSIONS ARE ASSUMED FOR FIRM EARTH AND GOOD CONCRETE. GREATER LENGTH AND WIDTH ARE RECOMMENDED FOR OUTSTANDING SOIL. FOUNDATION SHOULD BE DESIGNED FOR SAFE STATIC AND DYNAMIC SOIL LOADS. THE COURSE/BESSLER CO IS NOT RESPONSIBLE FOR THE DESIGN AND SILENT OF FOUNDATION.
- 3- FOUNDATION BOLTS ARE TO BE SET IN DOWNSPOT SLEEVES, LYING WITH THE BOLTS AND FILL FROM CONCRETE FOR PROPER LINE-UP OF BOLTS AND UNIT BASE HOLES. FILL SLEEVES WITH GROUT AFTER UNITS ARE LAID AND LEVEL. FILL JACK BOLTS WITH CONCRETE OR GROUT. SLEEVES NOT FURNISHED BY C-B CO.
- 4- STAIN ALL LIFTING, SPACING OR SMOOTH CONCRETE BY CHIPPING TOP OF FOUNDATION TO ASSURE GOOD BROUT BRIDGE. CRACKS TO BE CHIPPED AND SMOOTH WITH NEAT SMOOTH BORDERS.
- 5- JUSTIN WILL TO APPLY SALT FREE CONCRETE REINFORCING RODS (FOR BOTH TENSION AND COMPRESSION) TO BE INSTALLED VERTICALLY AND HORIZONTALLY THROUGHOUT THE FOUNDATION AND TO COME WITHIN 1" MINIMUM WITH BELOW THE SURFACE. RODS ARE NOT TO BE STITCHED TO FOUNDATION BOLTS.
- 6- CONCRETE AND ADJUSTMENT ARE TO BE CHECKED BY CUSTOMER FOR ALIGN, CENTER, AND COMPACTNESS. REFER TO A.S.M. STANDARDS ON MINERAL ADJUSTMENTS AND COMPACTNESS.
- 7- REFER TO C-B CO. STANDARD SHEET UC-18 NUMBER SERIES FOR SETTING AND GROUTING INSTRUCTIONS.
- 8- ALL DIMENSIONS BASED ON GROUT DIMENSIONS AS SHOWN IN NUMBER 1 UNITS.

UNITS FOR FOUNDATION UNITS			
UNIT	UNIT 1	UNIT 2	UNIT 3
1	1.000	1.000	1.000
2	1.000	1.000	1.000
3	1.000	1.000	1.000
4	1.000	1.000	1.000
5	1.000	1.000	1.000
6	1.000	1.000	1.000
7	1.000	1.000	1.000
8	1.000	1.000	1.000
9	1.000	1.000	1.000
10	1.000	1.000	1.000

26, 16



ITEM	DESCRIPTION	UNIT	REFERENCE
1	1/2" DIA. COIL SPRING		
2	1/2" DIA. COIL SPRING		
3	1/2" DIA. COIL SPRING		
4	1/2" DIA. COIL SPRING		
5	1/2" DIA. COIL SPRING		
6	1/2" DIA. COIL SPRING		
7	1/2" DIA. COIL SPRING		
8	1/2" DIA. COIL SPRING		
9	1/2" DIA. COIL SPRING		
10	1/2" DIA. COIL SPRING		



ITEM	DESCRIPTION	UNIT	REFERENCE
1	1/2" DIA. COIL SPRING		
2	1/2" DIA. COIL SPRING		
3	1/2" DIA. COIL SPRING		
4	1/2" DIA. COIL SPRING		
5	1/2" DIA. COIL SPRING		

204797