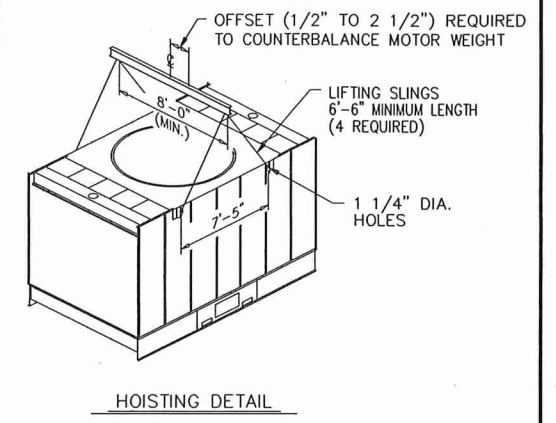
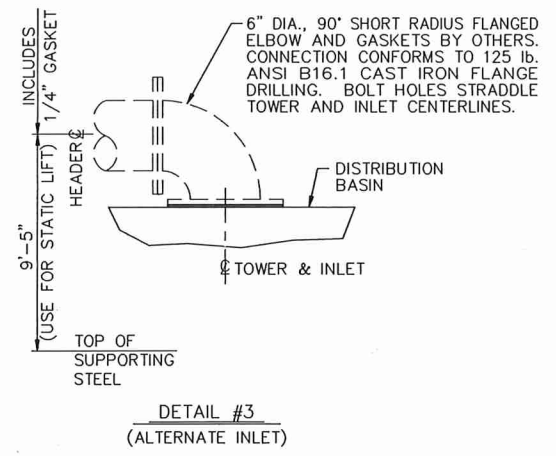


MODEL NO.	NC201	NC211	NC221
MOTOR HP.	10	15	20
TOWER SHIPPING WEIGHT (LESS OPTIONAL EQUIPMENT) (lbs.)	5960	6035	6110
MAX. OPERATING WEIGHT (LESS OPTIONAL EQUIPMENT) (lbs.)	14320	14380	14460
MAX. OPERATING LOAD AT ANCHOR BOLT LOCATION (lbs.)	3580	3595	3615


WEIGHT OF SELECTED OPTIONAL EQUIPMENT:

AIR INLET SCREEN OPTION	200 lbs. (PER CELL)
HC VALVES OPTION	150 lbs. (PER CELL)
MOTOR OUTSIDE AIRSTREAM OPTION	SEE APPLICABLE SALES DWG.
LADDER AND HANDRAIL OPTION	SEE APPLICABLE SALES DWG.
FAN CYLINDER EXTENSION OPTION	SEE APPLICABLE SALES DWG.
LADDER EXTENSION & SAFETY CAGE OPTION	SEE APPLICABLE SALES DWG.



GENERAL NOTES

1. COOLING TOWER MUST BE INSTALLED LEVEL TO INSURE MAXIMUM THERMAL PERFORMANCE AND TO AVOID RACKING.
2. BOTH AIR INLET FACES MUST HAVE AN ADEQUATE AIR SUPPLY. IF OBSTRUCTIONS EXIST, CONSULT A MARLEY COOLING TOWER COMPANY SALES ENGINEER.
3. TOWER MAINTENANCE OR INSPECTION DOES NOT REQUIRE PERSONNEL TO BE ON TOP OF TOWER. PORTABLE LADDERS ARE REQUIRED TO INSPECT HOT WATER BASINS UNLESS LADDER AND HANDRAIL OPTION IS EXERCISED. MOTORS AND GEAREDUCERS MAY ALSO BE INSPECTED FROM PORTABLE LADDERS BUT FROM INSIDE TOWER. ADEQUATE SAFETY PRECAUTIONS MUST BE TAKEN WHEN USING PORTABLE LADDERS.
4. HOISTING CLIPS ARE PROVIDED FOR EASE OF UNLOADING AND POSITIONING. FOR OVERHEAD LIFTS OR WHERE ADDITIONAL SAFETY PRECAUTIONS ARE PRUDENT, ADD SLINGS BENEATH THE TOWER.
5. ALTERNATE GRILLAGE ARRANGEMENTS MAY BE USED. FOR EXAMPLE, PIERS AT EACH ANCHORAGE POINT OR A CONCRETE SLAB. A CONCRETE SLAB REQUIRES THE DRAIN AND OVERFLOW BE LOCATED ON A CASED FACE RATHER THAN ITS STANDARD LOCATION IN COLD WATER BASIN. USE OF ALTERNATE ANCHOR BOLT CENTERLINE DIMENSION IS POSSIBLE. CONSULT A MARLEY COOLING TOWER COMPANY SALES ENGINEER.
6. TOWER MAY BE SUPPORTED ON VIBRATION ISOLATORS AT FOUR ANCHORAGE POINTS. WHEN MULTI-CELL TOWERS ARE ISOLATED WITH VIBRATION ISOLATION SPRINGS, THE SPRINGS MUST BE LOCATED UNDER THE SUPPORTING STEEL BEAMS AND NOT BETWEEN SUPPORT BEAMS AND TOWER.
7. THE VERTICAL WEIGHT OF PIPING ILLUSTRATED WITHIN TOWER PERIMETER MAY BE SUPPORTED BY TOWER STRUCTURE. ALL OTHER PIPING SHALL BE SUPPORTED INDEPENDENT OF TOWER. SEE SECTION A-A. DESIGN OF PIPING, SUPPORTS AND RESTRAINT OF LATERAL PIPING LOADS IS BY OTHERS.
8. MULTI-CELL TOWERS: SPACING BETWEEN CELLS IS 2 3/4\"/>

SCHEMATIC, SUPPORT AND INLET PIPING DETAILS										SERIES NC200			
PLOT		DATE		DRAWN		CHECKED		APPROVED		CAD		THE MARLEY COOLING TOWER CO.	
1-25		09-07-89		SNOW		SAE		MAK		CAD		 MISSION, KANSAS 66202	
ORDER NUMBER				DRAWING NUMBER				REV					
				89-41269				B					
LTR		DATE		REVISION		BY							

MAX. SUPPORTING BEAM DEFLECTION= 1/360 OF SPAN NOT TO EXCEED 1/2\"/>

114454
114455