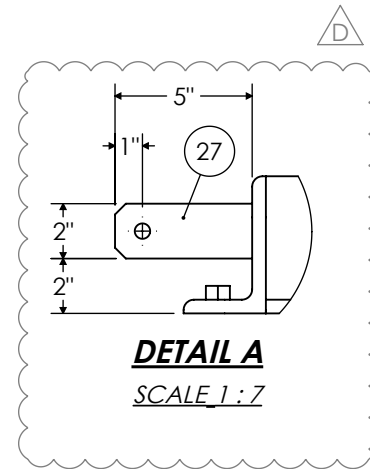
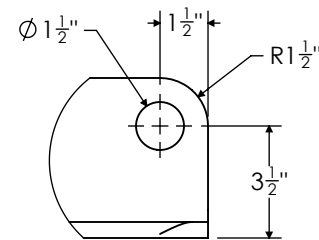


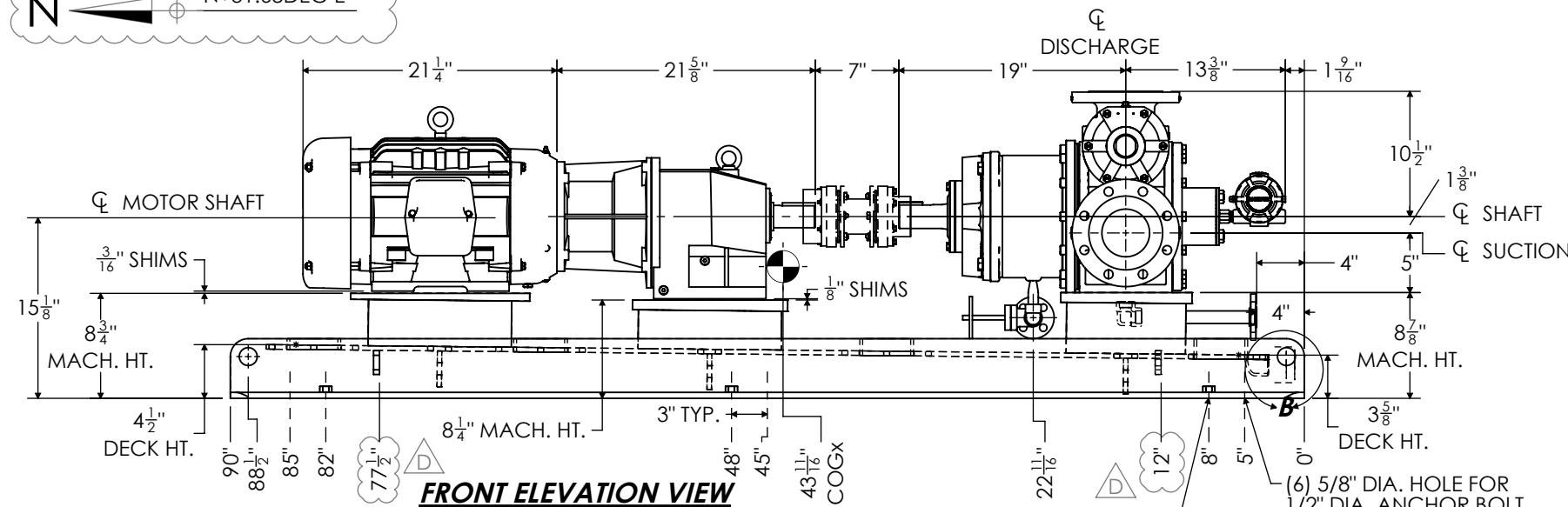
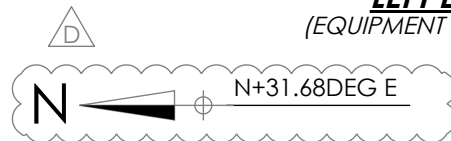
LEFT ELEVATION VIEW
(EQUIPMENT NOT SHOWN FOR CLARITY)



DETAIL A
SCALE 1:7



DETAIL B
SCALE 1:6



FRONT ELEVATION VIEW

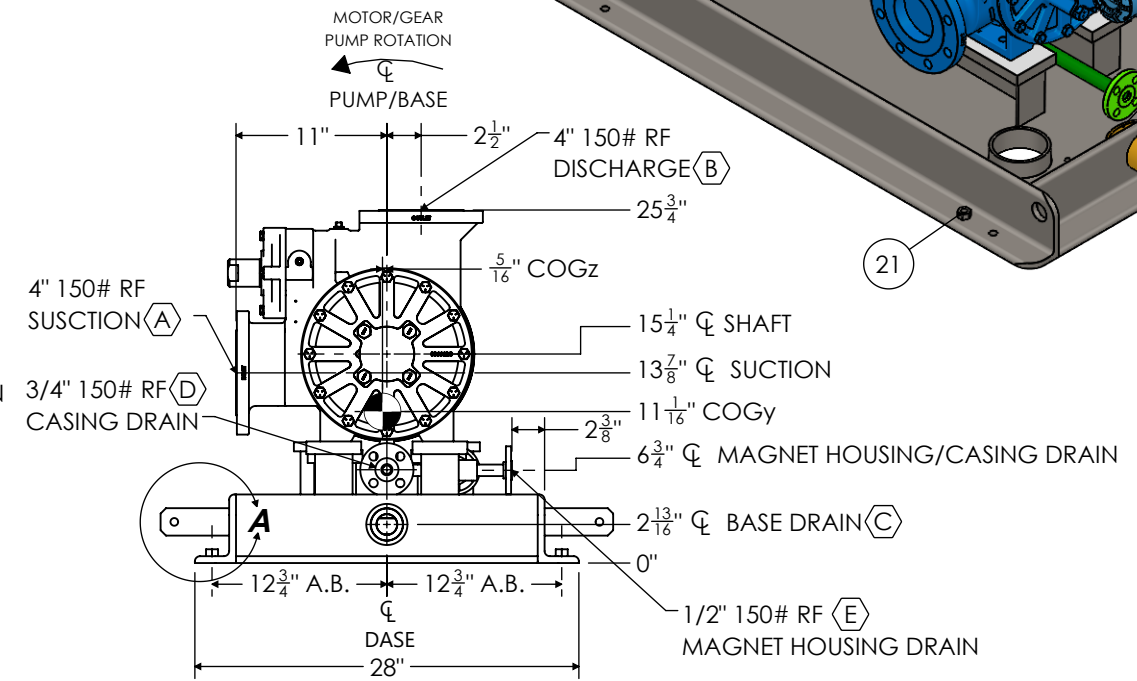
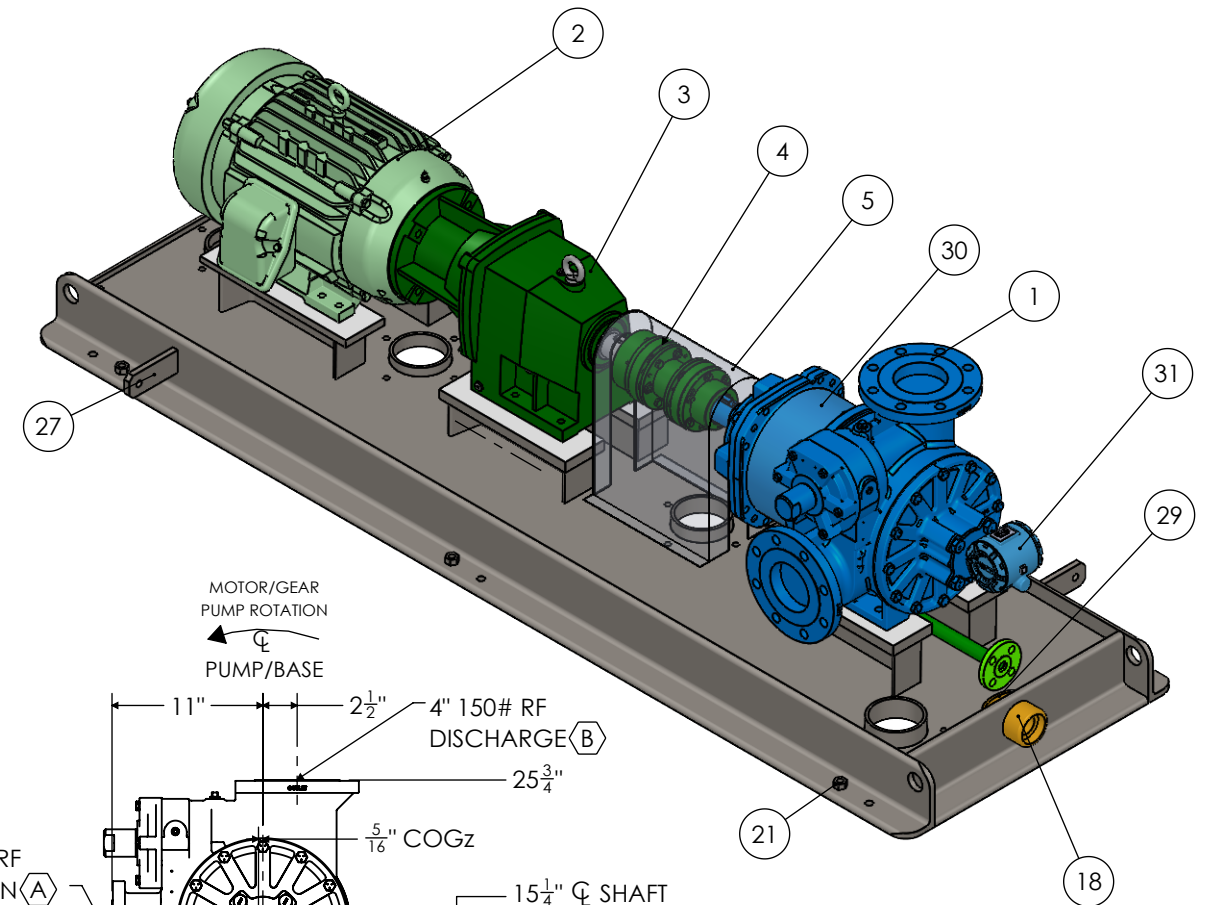
ITEM NO.	QTY.	DESCRIPTION	LENGTH
1	1	PUMP: BLACKMER MODEL MS4	
2	1	MOTOR: BALDOR 15HP, 1765RPM, 3PH/60Hz/460V, XP, 254TC	
3	1	GEAR REDUCER: NORD SK42-250TC	
4	1	COUPLING: REXNORD THOMAS 71 XTSR52-996 SPACER TYPE	
5	1	COUPLING GUARD: ALUMINUM (SHOP FIT)	
6	2	C10x20#	4 1/4"
7	2	C12x25#	3 1/4"
8	2	C12x25#	3 7/8"
9	1	ELBOW: 1/2" 3000# SW	
10	1	ELBOW: 3/4" 3000# SW	
11	1	FLANGE: 1/2" 150# RF Sch 160 SW	
12	1	FLANGE: 3/4" 150# RF Sch 160 SW	
13	2	FLAT BAR: 1" THK x 4"	11"
14	2	FLAT BAR: 1" THK x 4"	13"
15	2	FLAT BAR: 3/4" THK x 4"	15"
16	3	FLAT BAR: 3/8" THK. x 3"	22"
17	1	GATE VALVE: 1/2" SW	
18	1	HALF COUPLING: 2" 3000# THD	
19	2	L5x3x0.5	22"
20	2	L5x3x0.5	90"
21	6	NUT: 1/2" DIA. HEAVY HEX	
22	1	PIPE: 1/2" Sch 160 PE	2 13/16"
23	1	PIPE: 1/2" Sch 160 PE	3 3/16"
24	1	PIPE: 3/4" Sch 160 PE	2 3/4"
25	1	PIPE: 3/4" Sch 160 PE	10"
26	3	PIPE: 4" Sch 40 PE	15 1/16"
27	2	PLATE: 1/2" THK x 2" (GROUNDING LUG)	5"
28	1	PLATE: 3/8" THK x 22"	79"
29	1	PIPE CAP: 3" SCH 40 BE	
30	1	PUMP MAGNET HOUSING PART NO. 686552	
31	1	ROSEMOUNT 3144P TEMPERATURE TRANSMITTER. TAG #RA-TT-J1888A	
32	1	SWAGE: 1/2" x 1/4" Sch 160 PE	

(6) 5/8" DIA. HOLE FOR 1/2" DIA. LEVELING BOLT

NOTES:

- QTY: ONE (1) UNIT(S)
- PAINT: BASE
a. PRIMER: PRIMER TO BE COMPATIBLE W/ EPOXY GROUT & ISO 12944-5 C4PUMP;
b. FINISH COAT: NO FINISH COAT ON UNDERSIDE
- PAINT: PUMP
a. PUMP TO BE PAINTED MANUFACTURERS STANDARD COLOR AND PROCESS AS PROPOSED.
- TOTAL APPROX. WEIGHT: 2,072 LBS. PUMP: 469 LBS, MOTOR: 645 LBS, GEAR: 465 LBS, BASE: 625 LBS, COUPLING 11 LBS.
- TAG NO.: 18-J-1899 SINGLE RILCAR UNLOADING PUMP.
- GEAR REDUCTION: 6.65:1 RATIO.
- PUMP AND MOTOR PADS TO BE MACHINED FLAT AND PARALLEL TO WITHIN 0.002" PER FOOT. MACH. HT.
- TOLERANCES IS +0.03125-0.
- FOR MAGNET HOUSING DRAIN AND CASING DRAIN USE 316SS MATERIAL.
- PUMP RATED CONDITION:
a. FLOW: 230 GPM
b. DIFF. PRESSURE: 51.5 PSI
c. TEMP: 122 DEG F
d. PUMP SPEED: 233 RPM
- PUMP INTERNAL RELIEF VALVE SET PRESSURE 67 PSI
- EATON MODEL 72 BASKET STRAINER (4" CLASS 150) 316SS CONSTRUCTION (SHIPPED LOOSE). SEE ATTACHED STRAINER CAD & SPEC. SHEET.
- 1/2" DIA. STAINLESS STEEL ANCHOR BOLT BY OTHERS
- MOTOR SHALL BE SUITABLE FOR CLASS 1 DIV II, GAS GROUP B, C, D TEMP. CLASS T3C

REV.	DESCRIPTION	DATE	DRN.	CHK'D.	APP'D.
D	UPDATED PER COMMENTS	11/7/2023	MG	RAM	SW
C	UPDATED PER COMMENTS	9/18/2023	AF	RAM	SW
B	UPDATED PER COMMENTS	7/24/2023	MG	RAM	SW
A	FOR CUSTOMER APPROVAL	6/2/2023	MG	RAM	SW
REVISION TABLE					



RIGHT ELEVATION VIEW

As-Built
18-J-1899

CONNECTION SCHEDULE		
MARK	SIZE	SERVICE
A	4" 150# RF	SUCTION
B	4" 150# RF	DISCHARGE
C	2" 3000# NPT	SKID DRAIN
D	3/4" 150# RF	CASING DRAIN
E	1/2" 150# RF	MAG HOUSING DRAIN

PROPRIETARY AND CONFIDENTIAL					
THIS DRAWING IS THE PROPERTY OF DXP. THIS DRAWING SHALL NOT BE REPRODUCED OR USED IN PART OR IN FULL AS A BASIS OF DESIGN, MANUFACTURE OR SALE WITHOUT PRIOR WRITTEN PERMISSION FROM DXP.					
DXP CERTIFIED DATE: _____ BY: _____		THE INDUSTRIAL DISTRIBUTION EXPERTS			
THIS DRAWING IS NOT FOR CONSTRUCTION OR INSTALLATION PURPOSES UNLESS CERTIFIED		GENERAL ARRANGEMENT DRAWING BLACKMER MODEL MS4 PUMP POWERED BY NORD SK42-250TC GEAR (6.65:1 RATIO) DRIVEN BY BALDOR 15HP, 1765RPM, 254TC MOTOR			
TOL. ARE AS BELOW UON: GENERAL FRACTIONAL TOL. ± 1/8" PARALLEL PLANAR TOL. ± 1/16" OAL MOUNTING HOLE TOL. ± 1/16"		CUSTOMER: AIR PRODUCTS & CHEMICALS		JOB NO.: 13174185	
ORDER REQUIRED DATE:		CUSTOMER PO NO.: SM00004861		DRAWING NO.: 13174185-02	
DRN. BY: MG		DATE: 6/1/2023		CHK'D. BY: RAM	
				REV. D	

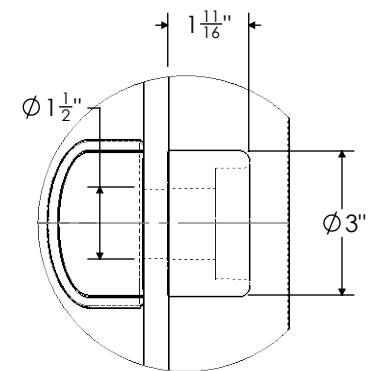


Technical drawing of a mechanical assembly. The drawing shows a side view of a component with a vertical section on the left and a horizontal section extending to the right. The vertical section has a total height of $3\frac{5}{8}$ " and a width of 11". The horizontal section has a length of 11". The drawing includes callouts for various parts: 24 (top vertical section), 10 (bottom vertical section), 25 (horizontal section), and 12 (rightmost vertical section). The dimensions are indicated by arrows and text.

Technical drawing of a mechanical assembly. The drawing shows a side view of a component with a central circular feature. Dimensions are indicated: a horizontal dimension of $9\frac{1}{8}"$ and a vertical dimension of $3\frac{1}{2}"$. Callout numbers 9, 11, 17, 22, 23, and 32 point to specific parts of the assembly.

Technical drawing of a rectangular base plate with dimensions and callouts:

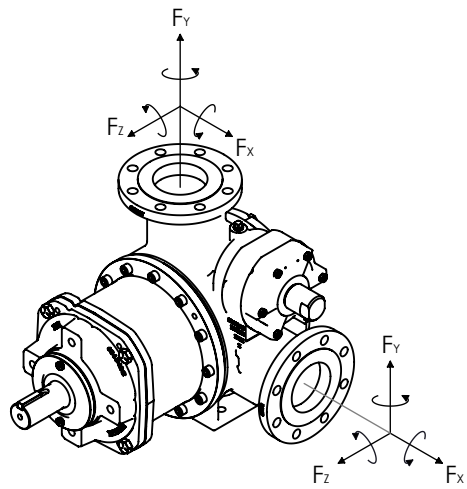
- Dimensions:**
 - Overall width: 90"
 - Overall height: 28"
 - Top edge dimensions: 15" TYP., 13" TYP., 64 $\frac{7}{8}$ " TYP., 43 $\frac{1}{4}$ " TYP., 11" TYP., 9 $\frac{3}{8}$ " TYP.
 - Bottom edge dimensions: 90", 83", 72 $\frac{5}{8}$ ", 64", 50", 35", 28", 15 $\frac{1}{8}$ ", 0"
 - Internal dimensions: 1 $\frac{1}{2}$ " TYP., 1 $\frac{1}{2}$ " TYP., 4" TYP., 4" TYP., 3 $\frac{1}{2}$ " TYP., 1 $\frac{3}{4}$ " TYP., 3 $\frac{1}{2}$ ", 1 $\frac{7}{8}$ ", 4", 3 $\frac{1}{2}$ ", 1 $\frac{5}{8}$ " TYP., 1 $\frac{1}{2}$ " TYP., 1 $\frac{1}{2}$ " TYP.
- Callouts:**
 - (4) $\phi \frac{1}{2}$ " VENT HOLE (PER COMPARTEMENT)
 - (4) $\phi \frac{1}{2}$ " GROUNDING LUG (PER GROUT HOLE)
 - R1 $\frac{1}{2}$ " TYP.
 - CL BASE
 - Callout numbers: 6, 7, 8, 13, 14, 15, 16, 20, 26, 28, 29



Technical drawing of a stepped block. The block has a total length of 22 inches and a total height of 3 inches. The top surface is divided into three sections: a 1-inch wide section on the left, a 7-inch wide section in the middle, and an 8-inch wide section on the right. The 1-inch wide section is 1 inch high. The 7-inch wide section is 2 inches high. The 8-inch wide section is 1 inch high. A dimension line labeled '16' points to the top surface of the 7-inch wide section.

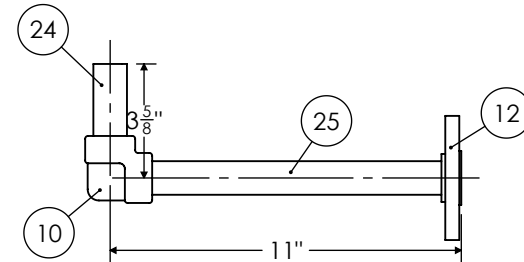
D	UPDATED PER COMMENTS	11/7/2023	MG	RAM	SW
C	UPDATED PER COMMENTS	9/18/2023	AF	RAM	SW
B	UPDATED PER COMMENTS	7/24/2023	MG	RAM	SW
A	FOR CUSTOMER APPROVAL	6/2/2023	MG	RAM	SW
REV.	DESCRIPTION	DATE	DRN.	CHK'D.	APP'D
REVISION TABLE					

As-Built
18-J-1899

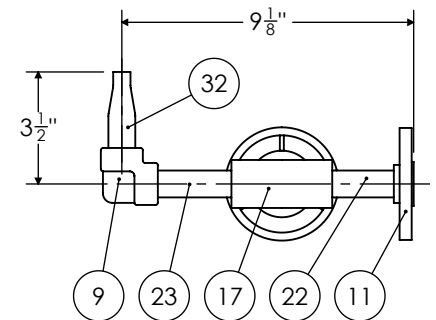


NOZZLE LOADS	FORCE (LBF)			MOMENTS (FT-LBF)		
	Fx	Fy	Fz	Mx	My	Mz
PORT A	300	300	300	500	500	500
PORT B	300	300	300	500	500	500

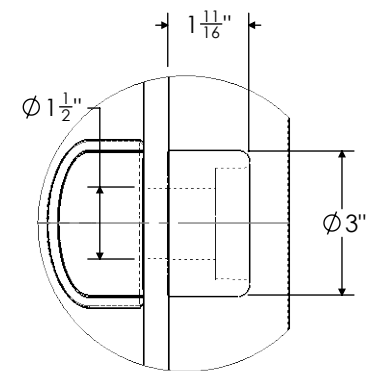
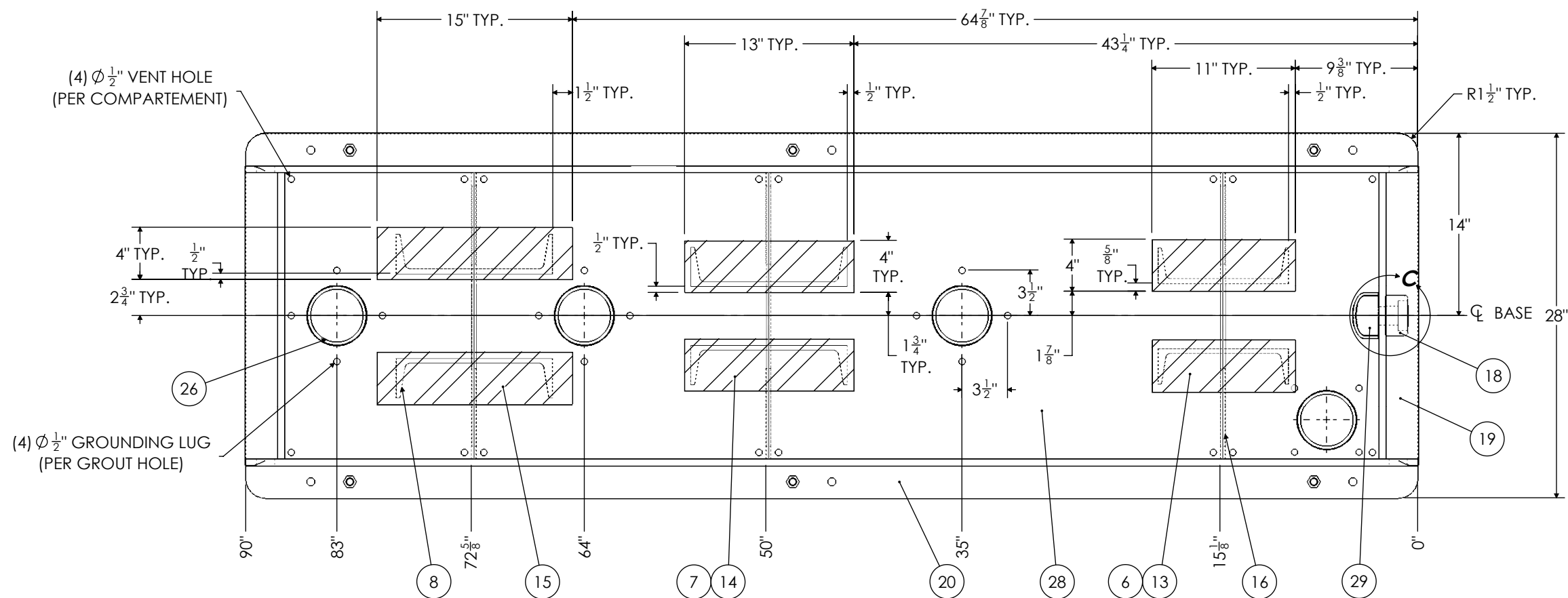
PROJECT NAME: WORLD ENERGY RENEWABLES PROJECT
CUSTOMER: AIR PRODUCTS & CHEMICAL
SERIAL NUMBER:
CUSTOMER PO NUMBER :SM00004861
ITEM NUMBER: 18-J-1899
END USER : WORLD ENERGY PARAMOUNT
SERVICE: SINGLE RAILCAR UNLOADING PUMP
UNIT: RAIL CAR UNLOADING & LOADING
WBS: 1870



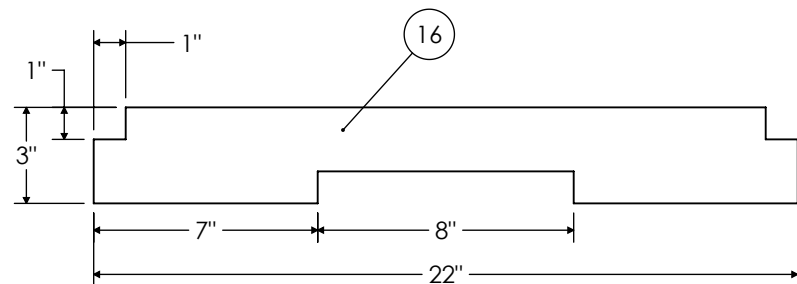
CASING DRAIN DETAIL
SCALE 1 : 6



MAGNET HOUSING DETAIL
SCALE 1 : 6



DETAIL C
SCALE 1 : 4



GUSSET DETAIL
SCALE 1 : 6

PLAN VIEW
(EQUIPMENT NOT SHOWN FOR CLARITY)

As-Built
18-J-1899

C	UPDATED PER COMMENTS	9/18/2023	AF	RAM	SW
B	UPDATED PER COMMENTS	7/24/2023	MG	RAM	SW
A	FOR CUSTOMER APPROVAL	6/2/2023	MG	RAM	SW
REV.	DESCRIPTION	DATE	DRN.	CHK'D.	APP'D.
REVISION TABLE					

PROPRIETARY AND CONFIDENTIAL				DXP	
THIS DRAWING IS THE PROPERTY OF DXP. THIS DRAWING SHALL NOT BE REPRODUCED OR USED IN PART OR IN FULL AS A BASIS OF DESIGN, MANUFACTURE OR SALE WITHOUT PRIOR WRITTEN PERMISSION FROM DXP.					
DXP CERTIFIED		THE INDUSTRIAL DISTRIBUTION EXPERTS			
DATE: _____ BY: _____		GENERAL ARRANGEMENT DRAWING BLACKMER MODEL MS4 PUMP POWERED BY NORD SK42-250TC GEAR (6.65:1 RATIO) DRIVEN BY BALDOR 15HP, 1765RPM, 254TC MOTOR			
THIS DRAWING IS NOT FOR CONSTRUCTION OR INSTALLATION PURPOSES UNLESS CERTIFIED					
TOL. ARE AS BELOW UON: GENERAL FRACTIONAL TOL. ± 1/8" PARALLEL PLANAR TOL. ± 1/16" OAL MOUNTING HOLE TOL. ± 1/16"		CUSTOMER: AIR PRODUCTS & CHEMICALS			
ORDER REQUIRED DATE:		CUSTOMER PO NO.: SM00004861		JOB NO.: 13174185	
		SCALE: 1:14		DRAWING NO.: 13174185-02	
		DATE: 6/1/2023		REV. C	
		DRN. BY: MG		CHK'D. BY: RAM	