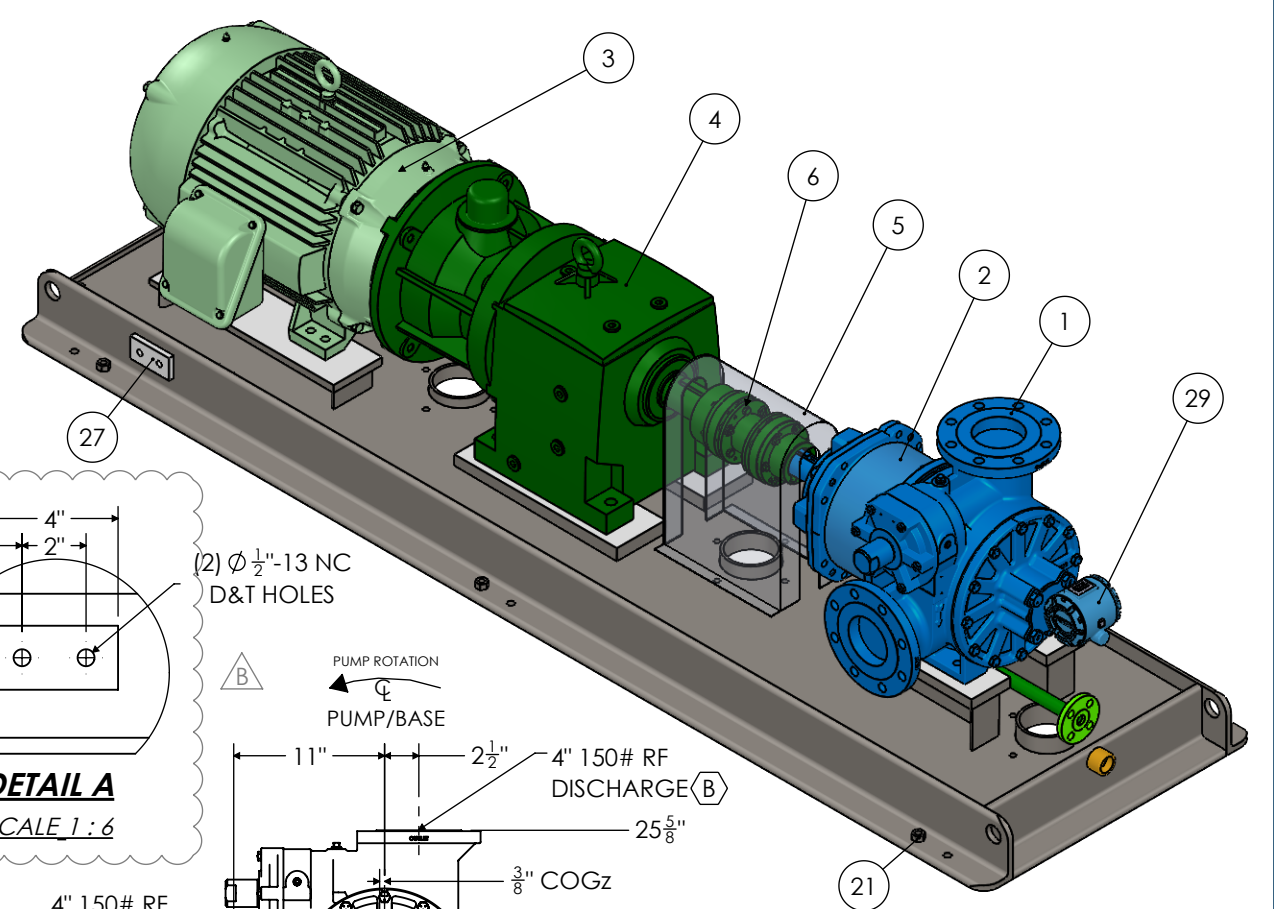


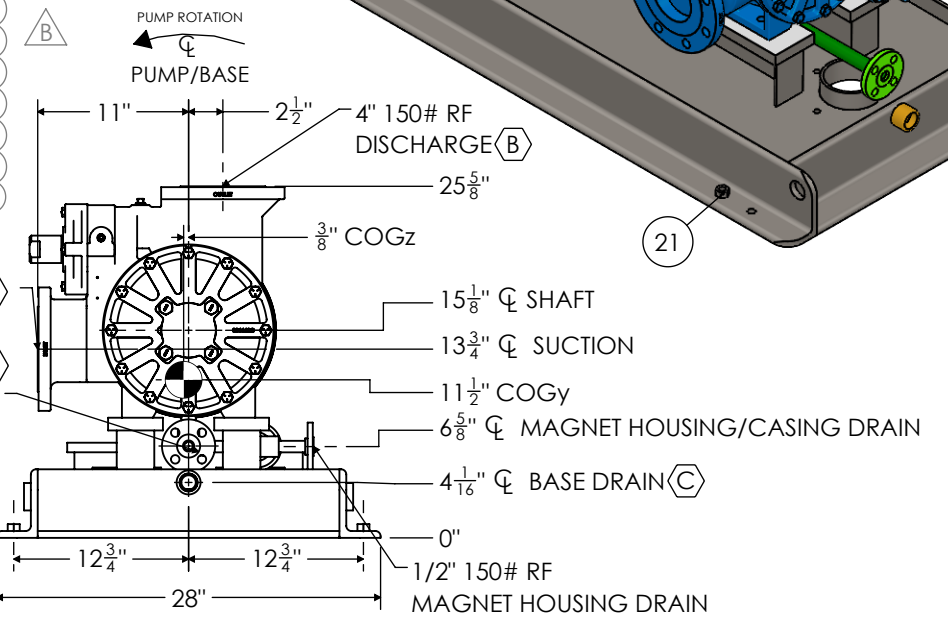
ITEM NO.	QTY.	DESCRIPTION	LENGTH
1	1	PUMP: BLACKMER MODEL MS4	
2	1	PUMP MAGNET HOUSING PART NO. 686552	
3	1	MOTOR: BALDOR 40HP, 1800RPM, 3PH/60HZ/460V, IEEE841, 324TC FRAME	
4	1	GEAR REDUCER: NORD SK62-320TC	
5	1	COUPLING GUARD: ALUMINUM (SHOP FIT)	
6	1	COUPLING: REXNORD THOMAS 71 XTSR52-996 SPACER TYPE	
7	2	C10x20#	4 1/4"
8	1	ELBOW: 1/2" 3000# SW	
9	1	ELBOW: 3/4" 3000# SW	
10	1	FLANGE: 1/2" 150# RF Sch 160 SW	
11	1	FLANGE: 3/4" 150# RF Sch 160 SW	
12	2	FLAT BAR: 1 1/4" THK x 5"	16 3/4"
13	2	FLAT BAR: 1" THK x 4"	11"
14	2	FLAT BAR: 3/4" THK x 5"	19"
15	3	FLAT BAR: 3/8" THK. x 3"	22"
16	1	GATE VALVE: 1/2" SW	
17	1	HALF COUPLING: 1" 3000# THD	
18	2	L5x3x0.5	22"
19	2	L5x3x0.5	100"
20	2	MC18x42.7#	2"
21	6	NUT: 1/2" DIA. HEAVY HEX	
22	1	PIPE: 1/2" Sch 160 PE	2 13/16"
23	1	PIPE: 1/2" Sch 160 PE	3 3/16"
24	1	PIPE: 3/4" Sch 160 PE	2 3/4"
25	1	PIPE: 3/4" Sch 160 PE	10"
26	4	PIPE: 4" Sch 40 PE	15 1/16"
27	2	PLATE: 1/2" THK x 2" (GROUNDING LUG)	4"
28	1	ROSEMOUNT 3144P TEMPERATURE TRANSMITTER TAG #RA-TT-J1876A	94"
29	1	SWAGE: 1/2" x 1/4" Sch 160 PE	
30	1		

NOTES:
1. QTY: ONE (1) UNIT(S)
2. PAINT: BASE
PRIMER: PRIMER TO BE COMPATIBLE W/ EPOXY GROUT & ISO 12944-5 C4
FINISH COAT: NO FINISH COAT ON UNDERSIDE
3. TOTAL APPROX. WEIGHT: 2,072 LBS. PUMP: 469 LBS, MOTOR: 645 LBS, GEAR: 465 LBS, BASE: 625 LBS, COUPLING 11 LBS
4. TAG NO.: 18-J-1867 SPUR 3 BIO-DIESEL BLEND COMPONENT UNLOADING PUMP
5. GEAR REDUCTION: 3.30:1 RATIO
6. PUMP AND MOTOR PADS TO BE MACHINED FLAT AND PARALLEL TO WITHIN 0.002" PER FOOT. MACH. HT. TOLERANCE IS +0.03125 -0.
7. FOR MAGNET HOUSING DRAIN AND CASING DRAIN USE 316SS MATERIAL

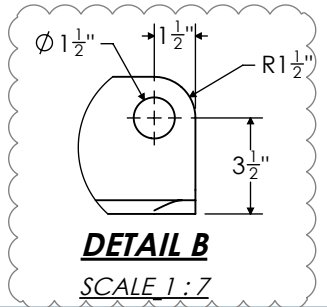
REV.	DESCRIPTION	DATE	DRN.	CHK'D.	APP'D.
B	UPDATED PER COMMENTS	6/29/2023	MG	RAM	SW
A	FOR CUSTOMER APPROVAL	6/2/2023	MG	RAM	SW
REVISION TABLE					



DETAIL A
SCALE 1:6



RIGHT ELEVATION VIEW



DETAIL B
SCALE 1:7

CONNECTION SCHEDULE		
MARK	SIZE	SERVICE
A	4" 150# RF	SUCTION
B	4" 150# RF	DISCHARGE
C	1" 3000# NPT	SKID DRAIN
D	3/4" 150# RF	CASING DRAIN

PROPRIETARY AND CONFIDENTIAL

THIS DRAWING IS THE PROPERTY OF DXP. THIS DRAWING SHALL NOT BE REPRODUCED OR USED IN PART OR IN FULL AS A BASIS OF DESIGN, MANUFACTURE OR SALE WITHOUT PRIOR WRITTEN PERMISSION FROM DXP.

DXP CERTIFIED
DATE: _____
BY: _____

THIS DRAWING IS NOT FOR CONSTRUCTION OR INSTALLATION PURPOSES UNLESS CERTIFIED

TOL. ARE AS BELOW UON:
GENERAL FRACTIONAL TOL. $\pm 1/8"$
PARALLEL PLANAR TOL. $\pm 1/16"$ OAL
MOUNTING HOLE TOL. $\pm 1/16"$

ORDER REQUIRED DATE: _____

THE INDUSTRIAL DISTRIBUTION EXPERTS

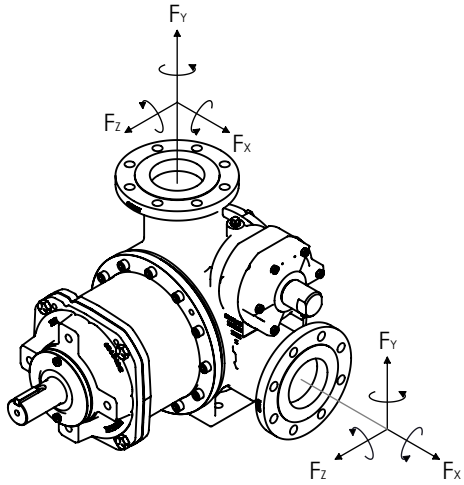
GENERAL ARRANGEMENT DRAWING
BLACKMER MODEL MS4 PUMP
POWERED BY NORD SK62-320TC GEAR (3.30:1 RATIO)
DRIVEN BY BALDOR 40HP, 1800RPM, 324TC MOTOR

CUSTOMER: **AIR PRODUCTS & CHEMICALS**

CUSTOMER PO NO.: **SM00004861** JOB NO.: **13174185**

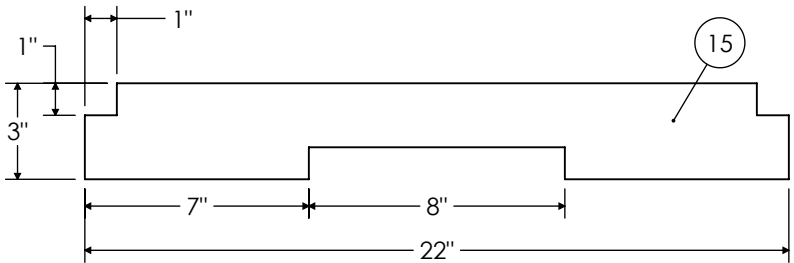
SCALE: **1:14** DATE: **6/1/2023** DRAWING NO.: **13174185-01** REV. **B**

DRN. BY: **MG** CHK'D. BY: **RAM**

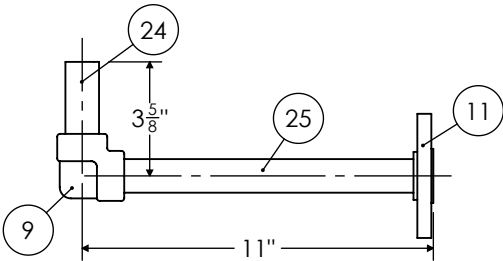


NOZZLE LOADS	FORCE (LBF)			MOMENTS (FT-LBF)		
	Fx	Fy	Fz	Mx	My	Mz
PORT A	300	300	300	500	500	500
PORT B	136	136	136	69	69	69

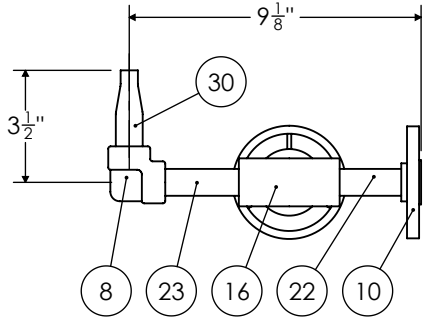
PROJECT NAME: WORLD ENERGY RENEWABLES PROJECT
CUSTOMER: AIR PRODUCTS & CHEMICAL
SERIAL NUMBER:
CUSTOMER PO NUMBER :SM00004861
ITEM NUMBER: 18-J-1867
END USER : WORLD ENERGY PARAMOUNT
SERVICE: SPUR 3 BIO-DIESEL BLEND COMPONENT UNLOADING PUMP
UNIT: RAIL CAR UNLOADING & LOADING
WBS: 1870



GUSSET DETAIL
SCALE 1 : 6



CASING DRAIN DETAIL
SCALE 1 : 6



MAGNET HOUSING DETAIL
SCALE 1 : 6

△
B

B	UPDATED PER COMMENTS	6/29/2023	MG	RAM	SW
A	FOR CUSTOMER APPROVAL	6/2/2023	MG	RAM	SW
REV.	DESCRIPTION	DATE	DRN.	CHK'D.	APP'D.
REVISION TABLE					

PROPRIETARY AND CONFIDENTIAL				<div>DXP</div>	
THIS DRAWING IS THE PROPERTY OF DXP. THIS DRAWING SHALL NOT BE REPRODUCED OR USED IN PART OR IN FULL AS A BASIS OF DESIGN, MANUFACTURE OR SALE WITHOUT PRIOR WRITTEN PERMISSION FROM DXP.					
DXP CERTIFIED		THE INDUSTRIAL DISTRIBUTION EXPERTS			
DATE: _____ BY: _____		GENERAL ARRANGEMENT DRAWING BLACKMER MODEL MS4 PUMP POWERED BY NORD SK62-320TC GEAR (3.30:1 RATIO) DRIVEN BY BALDOR 40HP, 1800RPM, 324TC MOTOR			
THIS DRAWING IS NOT FOR CONSTRUCTION OR INSTALLATION PURPOSES UNLESS CERTIFIED		CUSTOMER: AIR PRODUCTS & CHEMICALS			
TOL. ARE AS BELOW UON: GENERAL FRACTIONAL TOL. ± 1/8" PARALLEL PLANAR TOL. ± 1/16" OAL MOUNTING HOLE TOL. ± 1/16"		CUSTOMER PO NO.: SM00004861		JOB NO.: 13174185	
ORDER REQUIRED DATE:		SCALE: 1:14	DATE: 6/1/2023	DRAWING NO.:	REV.
		DRN. BY: MG	CHK'D. BY: RAM	13174185-01	B